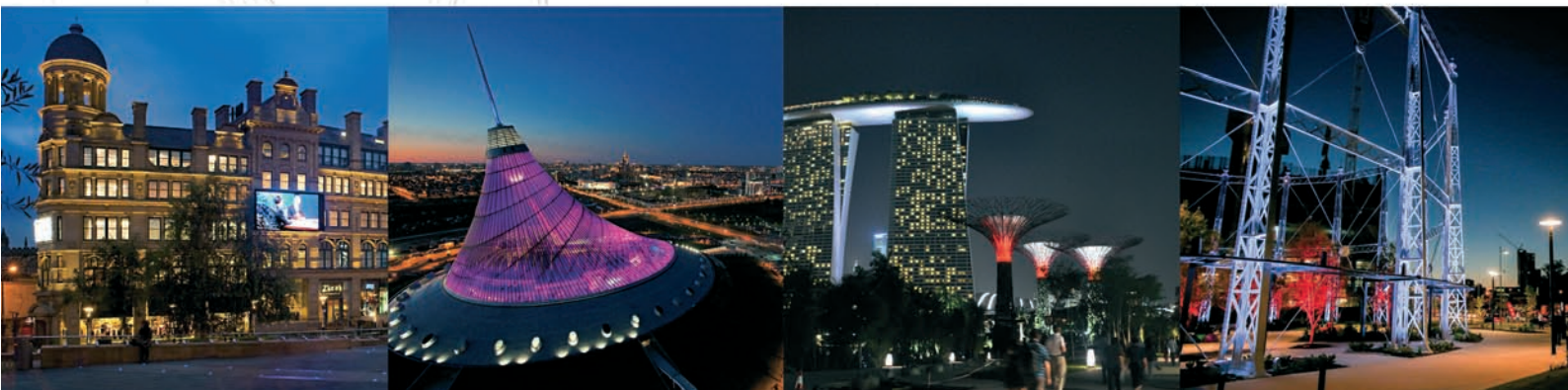


**5 YEAR  
WARRANTY**  
ANOLIS



# PRODUCT GUIDE

Leading Lighting Solutions





**ANOLIS** was established to design and manufacture high-quality LED lighting products.

Since its conception, ANOLIS has gone from strength to strength, producing a constantly expanding range of products with a well balanced mix of innovation, imagination and experience. This, together with state-of-the-art lighting technology, has created a market leading range.

Reliability is the first priority. ANOLIS uses only the best components and precision manufacturing techniques, ensuring that the brand offers all the benefits associated with LED lighting: extreme efficiency, long life, low maintenance, low heat and no UV output.

By combining these characteristics with industry-standard dimensions and flexible control options, true specifier-class lighting systems can be created.

ANOLIS products can be seen in a wide variety of applications worldwide, and is embraced by many market sectors including architectural, commercial, industrial, transport, retail, domestic and entertainment lighting.

From discreet white colour-controlled accent lighting to full RGBW building illumination, ANOLIS products present lighting designers and architects with creative solutions for the most demanding client requirements.

All ANOLIS products meet the relevant product directives and bear the CE mark. Most also bear the ETL mark, and approval for the remaining products is currently pending.

Maintaining a close working relationship with the leading component manufacturers ensures that ANOLIS stays at the forefront of the ever-evolving LED market. New technologies are constantly allowing higher output and greater efficiency which continues to open up new market opportunities.

**ANOLIS is the professional choice - both now and for the future.**



## ANOLIS ADVANTAGES

As the global LED lighting market is currently growing at a phenomenal rate, there are many choices for today's lighting designers and installers. When considering LED lighting, it is important to choose a manufacturer who can provide the quality of both the product and level of service to ensure the required results are achieved. Anolis is able to offer the highest quality of product, supported by a global distribution network to ensure service levels to match.

- Anolis manufactures all of its LED products from the highest quality components available. Working closely with the world's leading component suppliers ensures the reliability and consistency required by today's wide range of lighting projects.
- Anolis LED products are designed, tested and manufactured at our state of the art European manufacturing facility in the Czech Republic. Complete control over all stages of the manufacturing process combined with a vigorous testing process ensures the highest level of quality control, giving designers and specifiers the confidence to choose Anolis.
- Keeping all stages of the manufacturing process in house allows Anolis to respond rapidly to custom products. The in-house Design and R&D team are able to work closely with clients to produce custom designed products for the most challenging projects.
- Anolis is able to offer a complete LED solution manufacturing both LED luminaries as well as the LED drivers and controllers ensuring a matched system is available for the widest range of applications.
- Anolis custom software is utilized in all Anolis drivers to constantly monitor LED performance, drive currents continually adjusted to ensure optimum performance of LEDs ensuring the maximum benefits of LED technology are achieved at all times.
- Anolis products are covered by all relevant technology patents, meaning they can be specified with the utmost confidence.
- Anolis products meet or exceed internationally recognized standards including CE, \*ETL/UL, and SELV giving peace of mind to designers, specifiers and installers.

\* (Anolis is continually developing its product range therefore please check individual products for conformity)





## ANOLIS LED GREEN STATEMENT

Governments and lighting professionals worldwide all agree that the recent advances in LED technology hold tremendous potential to conserve energy on a global scale.

Until recently LED light sources have been restricted to specialty applications, due to their poor overall light output however LEDs have progressed greatly and are now able to compete with conventional lighting technology in virtually all applications.

Today's advanced LED lamp sources are often capable of being five or more times as efficient than incandescent and halogen lamp sources, and exceed the efficiency of most fluorescent technologies. LED based technology continues to be the fastest developing technology within the lighting industry.

It is not only low power consumption that makes LED lighting environmentally acceptable. Generally they have much longer lifetimes than conventional sources which translates to lower maintenance and replacement costs meaning less waste as they are inherently free of mercury and other harmful elements. In short, low voltage energy efficient LED lighting systems help lighting professionals make ecologically-sound design choices today, while promising to have a greater positive impact on the future environment.

Currently it is estimated that up to 20% of global electricity production is consumed by lighting! LED lighting technology offers lighting specifiers, designers and architects the ability to make a real difference for tomorrow.

Government directives have already been introduced around the world effectively beginning the phasing out of inefficient incandescent and halogen light sources. NOW is the time to choose LED lighting solutions.



## Marina Bay Sands - Singapore



# ArcPad, ArcSource Integral

The ArcPad range is a line of durable and robust fixtures with a projected lifespan of a minimum 60,000 hours. ArcPad is available in a variety of formats from the compact ArcPad 48 Integral™ to the now industry-standard ArcPad Xtreme™ whose performance is unrivaled by competitors and imitators alike. The ArcPad range is designed to produce a generation of rich, saturated colours and dynamic white as well as a range of static white effects to be used in wall-washing, spot lighting, and scale architectural applications. ArcSource 96™ Integral offers many of the same features in a compact package for installation where space may be at a premium.

ArcPad Xtreme™ ► Pg. 8



ArcPad 94 Integral™ ► Pg. 9



ArcPad 48™ ► Pg. 10



ArcPad 48 Integral™ ► Pg. 11



ArcSource 96 Integral™ ► Pg. 12



ArcPad Zoom 48MC™ ► Pg. 13





# ArcPad Xtreme™

ArcPad Xtreme™ is a special fixture with two independent LED modules. LEDs are densely populated, providing extremely bright light output. The fixture is completely silent due to the convection cooling. The IP67 rating means it can be used for exterior installations.

ArcPad Xtreme™ is an ideal fixture for illuminating large buildings and landscapes, thanks to the high light output of the LED modules. The unique combination of RGBW LED colours delivers a stunning light quality, not seen in other competitive products on the market.



## TECHNICAL SPECIFICATIONS:

### ELECTRICAL

Input Voltage 100-240V AC 50/60 Hz (277V cost option)  
Typical Power Consumption 580W +/-10%

### OPTICAL

Light Source 188 x High Power LEDs  
Colour Variants RGBW (W-WW-3200K, CW-6500K), PW (3200K, 4300K, 6500K), SW (3200-6500K), R, G, B, A  
Red/Green/Blue/White, Red, Green, Blue, Amber, Pure White, Smart White  
Lumen Output (Delivered) 16108lm (RGBCW at 10°), 29354lm (PW 3200K at 10°)  
Beam Angle 10°, 23°, 44°, 14°x26°  
Projected Lumen Maintenance 77,000 hrs (L70@ 25°C / 77°F)

### CONTROL

Interface Protocol DMX512  
Wireless DMX (Optional Accessory) Lumen Radio CRM Technology  
Control System Anolis Lighting Controls or any Third Party DMX512 Controllers  
Power Supply Integral (standard), Extended (optional)  
Stand Alone Control Yes

### PHYSICAL

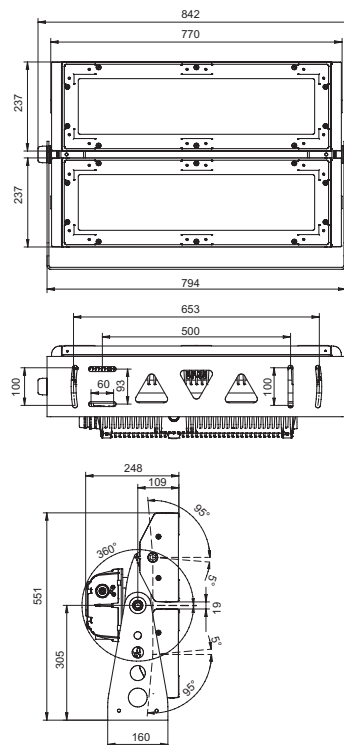
Width x Height x Depth Inches: 33.15 x 21.7 x 9.76  
mm: 842 x 551 x 248  
Weight lbs: 125.7  
kg: 57  
Housing High Pressure Die-Cast Aluminium Body  
Tempered Glass  
Finish Options Silver (STD), Black/White/custom RAL (cost option)  
Fixture Cable and Connections Li9YC11Y - 3xAWG16+1 (2xAWG24) + Junction Box  
Fixing Method Stirrup  
Adjustability +95°/-5°, Both LED Modules +/-180°  
IP Rating IP67 (IP66 Junction Box)  
IK Rating IK\*\*  
Cooling System Convection  
Operating Ambient Temperature -20°C / +40°C [-4°F / +104°F]  
Operating Temperature +85°C @ Ambient +40°C [+185°F @ Ambient +104°F]

### CERTIFICATION

Listings ETL / cETL, CE, RoHS



## DIMENSIONS (in mm):



### ACCESSORIES

Junction Box (included)  
Gasket Cable Grommet M20 (included)  
Barn Doors  
Top Hat  
Half Top Hat



# ArcPad 94 Integral™

ArcPad 94 Integral™ is an LED outdoor fixture, LEDs are densely populated producing a high light output. ArcPad 94 Integral™ is an ideal fixture to illuminate tall buildings and structures. The RGBW LED configuration delivers stunning light quality not seen in other competitive products on the market.



IP67



## TECHNICAL SPECIFICATIONS:

### ELECTRICAL

Input Voltage  
Typical Power Consumption

100-240V AC 50/60 Hz (277V cost option)  
290W +/-10%

### OPTICAL

Light Source  
Colour Variants

94 x High Power LEDs  
RGBW (W=WW-3200K, CW-6500K), PW (3200K, 4300K, 6500K),  
SW (3200-6500K), R, G, B, A  
Red/Green/Blue/White, Red, Green, Blue, Amber, Pure White,  
Smart White  
8054lm (RGBCW at 10°), 14677lm (PW 3200K at 10°)  
10°, 23°, 44°, 14°x26°  
77,000 hrs ( L70@ 25°C / 77°F)

Lumen Output (Delivered)  
Beam Angle  
Projected Lumen Maintenance

### CONTROL

Interface Protocol  
Wireless DMX (Optional Accessory)  
Control System  
Power Supply  
Stand Alone Control

DMX512  
Lumen Radio CRM Technology  
Anolis Lighting Controls or any Third Party DMX512 Controllers  
Integral (standard), Extended (optional)  
Yes

### PHYSICAL

Width x Height x Depth

Inches: 33.15 x 13.9 x 10.67  
mm: 842 x 353 x 271

Weight

lbs: 86  
kg: 39

Housing

High Pressure Die-Cast Aluminium Body  
Tempered Glass

Finish Options  
Fixture Cable and Connections

Silver (STD), Black/White/custom RAL (cost option)  
Li9YC11Y - 3xAWG16+1 (2xAWG24) + Junction Box

Fixing Method

Stirrup

Adjustability

+/-180°

IP Rating

IP67 (IP66 Junction Box)

IK Rating

IK\*\*

Cooling System

Convection

Operating Ambient Temperature

-20°C / +40°C (-4°F / +104°F)

Operating Temperature

+85°C @ Ambient +40°C (+185°F @ Ambient +104°F )

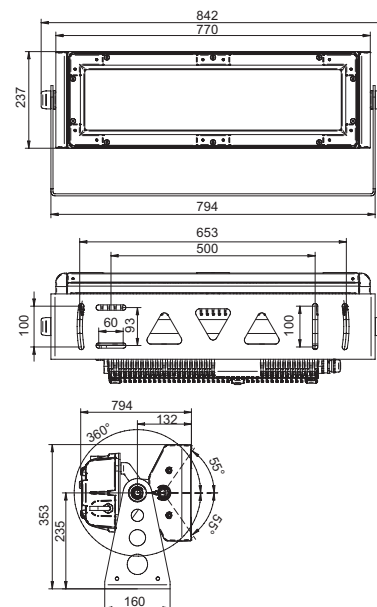
### CERTIFICATION

Listings

ETL / cETL, CE, RoHS



## DIMENSIONS (in mm):



### ACCESSORIES

Junction Box (Included)  
Gasket Cable Grommet M20 (included)  
Barn Doors  
Top Hat  
Half Top Hat

# ArcPad 48™

The ArcPad 48 has been designed to produce a range of rich saturated colours and colour changing effects as well as the full range of white light for wall-washing, spot lighting, and many architectural lighting applications. Remote power and electronics mean ArcPad 48 can be installed with confidence in the most inaccessible installations. With an extremely high output to physical size ratio and high IP rating ArcPad 48 is a truly versatile lighting tool.



IP67



## TECHNICAL SPECIFICATIONS:

### ELECTRICAL

Input Voltage	48V DC
Typical Power Consumption	60W +/-10%

### OPTICAL

Light Source	48 x High Power LEDs
Colour Variants	RGBW (W=WW-3000K, CW-6500K), PW (3000K, 4000K, 6500K), SW (3000-6500K), R, G, B, A Red/Green/Blue/White, Red, Green, Blue, Amber, Pure White, Smart White
Lumen Output (Delivered)	2784lm (RGBCW at 12°), 2522lm (PW 3000K at 13°)
Beam Angle	13°, 26°, 45°, 13°x38°
Projected Lumen Maintenance	60,000 hrs ( L70@ 25°C / 77°F)

### CONTROL

Wireless DMX (Optional Accessory)	N/A
Control System	Anolis Lighting Controls or any Third Party DMX512 Controllers
Power Supply	ArcPower 48, ArcPower 384 Rack-Mount
Stand Alone Control	N/A

### PHYSICAL

Width x Height x Depth	Inches: 9.57 x 5.51 x 4.72 mm: 243 x 140 x 120
Weight	lbs: 4 kg: 1.8
Housing	High Pressure Die-Cast Aluminium Body Tempered Glass
Finish Options	Silver (STD), Black/White/custom RAL (cost option)
Fixture Cable and Connections	LiYY 8xAWG22 - 0.5m Long (1.64ft) - Chogori IP68 Connector
Fixing Method	Mounting Plate
Adjustability	Pan +/-45°, Tilt +60° -90°
IP Rating	IP67
IK Rating	IK**
Cooling System	Convection
Operating Ambient Temperature	-20°C / +40°C [-4°F / +104°F]
Operating Temperature	+70°C @ Ambient +25°C [+158°F @ Ambient +77°F]

### CERTIFICATION

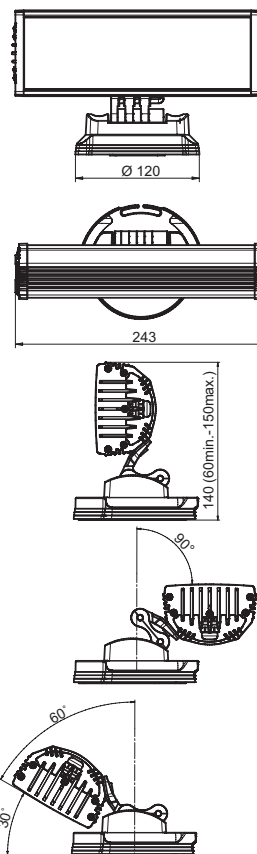
Listings	CE, RoHS
----------	----------

### ACCESSORIES

Connector Chogori C6RBDU-08BFFA (Female) IP68 (included)
Barn Doors
Top Hat
Half Top Hat



## DIMENSIONS (in mm):



# ArcPad 48 Integral™

All the features of the hugely successful ArcPad 48™ are combined with integral power and data in the ArcPad 48 Integral™, allowing replacement of existing lighting technology with dynamic LED fittings without the need or expense of installing data cables thanks to the wireless control option available. Extremely high output to physical size ratio and high IP rating of ArcPad 48™ allow for dramatic lighting schemes to be created with ArcPad 48 Integral™ whether it be dynamic white lighting or full spectrum RGBW.



## TECHNICAL SPECIFICATIONS:

### ELECTRICAL

Input Voltage	100-240V AC 50/60 Hz
Typical Power Consumption	60W +/-10%
In Rush Current	40A Max - 10ms

### OPTICAL

Light Source	48 x High Power LEDs
Colour Variants	RGBW (W=WW-3000K, CW-6500K), PW (3000K, 4000K, 6500K), SW (3000-6500K), R, G, B, A Red/Green/Blue/White, Red, Green, Blue, Amber, Pure White, Smart White
Lumen Output (Delivered)	2784lm (RGBCW at 12°), 2522lm (PW 3000K at 13°)
Beam Angle	13°, 26°, 45°, 13°x38°
Projected Lumen Maintenance	60,000 hrs ( L70@ 25°C / 77°F)

### CONTROL

Interface Protocol	DMX512
Wireless DMX (Optional Accessory)	Lumen Radio CRMX Technology
Control System	Anolis Lighting Controls or any Third Party DMX512 Controllers
Power Supply	Integral
Stand Alone Control	Yes

### PHYSICAL

Width x Height x Depth	Inches: 9.57 x 6.69 x 6.46 mm: 243 x 170 x 164
Weight	lbs: 6.6 kg: 3
Housing	High Pressure Die-Cast Aluminium Body Tempered Glass
Finish Options	Silver (STD), Black/White/custom RAL (cost option)
Fixture Cable and Connections	Li9YC11Y - 3xAWG16+1 (2xAWG24) + Junction Box
Fixing Method	Mounting Plate
Adjustability	Pan +/-17°, Tilt +60° -90°
IP Rating	IP67 (IP66 Junction Box)
IK Rating	IK**
Cooling System	Convection
Operating Ambient Temperature	-20°C / +40°C (-4°F / +104°F)
Operating Temperature	+80°C @ Ambient +40°C (+176°F @ Ambient +104°F )

### CERTIFICATION

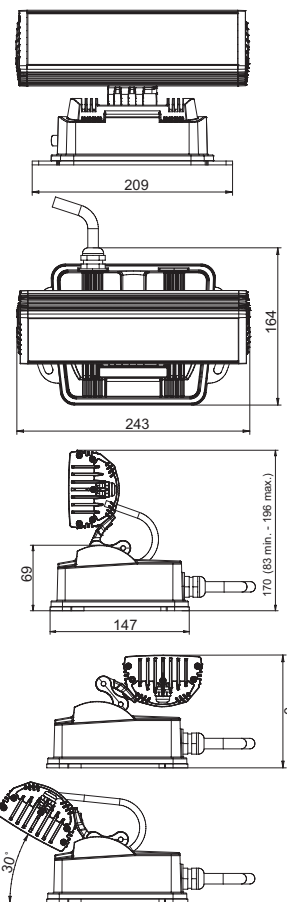
Listings	CE, RoHS, ETL / cETL pending
----------	------------------------------

### ACCESSORIES

Junction Box (included)
Gasket Cable Grommet M20 (included)
Barn Doors
Top Hat
Half Top Hat



## DIMENSIONS (in mm):



# ArcSource 96 Integral™

The Anolis ArcSource 96 Integral™ uses the advanced technology of the highly successful ArcPad 48 Integral™ while providing more power and light output as is often required by today's lighting projects. Housed in compact IP67 rated aluminum housing, the 96 high brightness LED provides unbelievable light output previously unavailable in an LED fixture of this size. Control is via DMX/RDM allowing for advanced programming options, up to date technology ensures stable white balance is achieved as well as a minimum life expectancy of 76,000 hours.

Available in a variety of colour options including RGB/CW, RGB/WW, RGB/A and a range of static white as well as the popular Smart White dynamic white variant, the ArcSource 96 Integral™ is a truly versatile fixture that can be specified in the most demanding of interior and exterior lighting schemes.



IP67



## TECHNICAL SPECIFICATIONS:

### ELECTRICAL

Input Voltage  
Typical Power Consumption  
In Rush Current

100-240V AC 50/60 Hz  
200W +/-10%  
40A Max - 10ms

### OPTICAL

Light Source  
Colour Variants

96 x High Power LEDs  
RGBW (W-WW-3000K, CW-6500K), PW (3000K, 4000K, 6500K),  
SW (3000-6500K), R, G, B, A  
Red/Green/Blue/White, Red, Green, Blue, Amber, Pure White,  
Smart White  
7896lm (RGCW at 13°), 8920lm (PW 6500K at 13°)  
13°, 25°, 32° x 12°, 44°  
76,000 hrs ( L70 @ 25°C / 77°F )

Lumen Output (Delivered)  
Beam Angle  
Projected Lumen Maintenance

### CONTROL

Interface Protocol  
Wireless DMX (Optional Accessory)  
Control System  
Power Supply  
Stand Alone Control

DMX512  
Lumen Radio CRMX Technology  
Anolis Lighting Controls or any Third Party DMX512 Controllers  
Integral  
Yes

### PHYSICAL

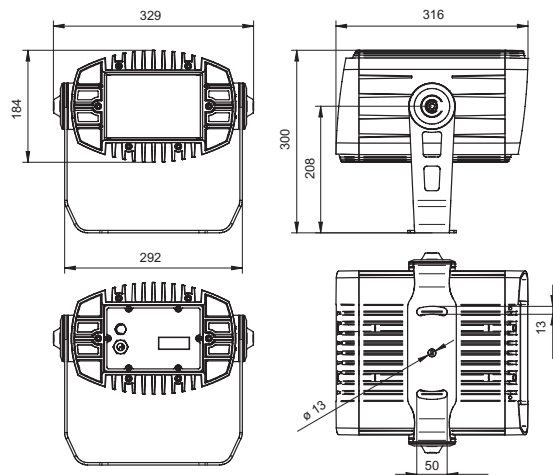
Width x Height x Depth  
  
Weight  
  
Housing  
  
Finish Options  
Fixture Cables and Connections  
Fixing Method  
Adjustability  
IP Rating  
IK Rating  
Cooling System  
Operating Ambient Temperature  
Operating Temperature

Inches: 12.95 x 11.81 x 12.44  
mm: 329 x 300 x 316  
lbs: 24.4  
kg: 11.5  
Cast Aluminium  
Tempered Glass  
Silver (STD), Black/White/custom RAL (cost option)  
Li9YC11Y - 3xAWG16+1 (2xAWG24) + Junction Box  
Stirrup / Floor Stand (Optional)  
360°  
IP67 (IP66 Junction Box)  
IK\*\*  
Convection  
-20°C / +40°C (-4°F / +104°F)  
+80°C @ Ambient +40°C (+176°F @ Ambient +104°F)

### CERTIFICATION

Listings  
CE, RoHS, ETL / cETL pending

## DIMENSIONS (in mm):



### ACCESSORIES

Junction Box (included)  
Gasket Cable Grommet M20 (included)  
Barn Doors  
Top Hat  
Half Top Hat  
Floor Stand



# ArcPad Zoom 48MC™

The latest addition to the versatile Anolis ArcPad range brings high output multichip technology and an electronic zoom to widen even further the number of applications for which it can be specified.

Beam angles can be electronically adjusted to give both dynamic effects for façade illumination as well as extremely accurate focusing for static lighting schemes. Combining a high IP rating of 67 with an Impact Rating of 10 the ArcPad Zoom 48MC™ can withstand virtually all climatic conditions.



IP67



## TECHNICAL SPECIFICATIONS:

### ELECTRICAL

Input Voltage 100-277V AC, 50/60 Hz  
Typical Power Consumption 150W +/-5%

### OPTICAL

Light Source 12 x 15W Multi -Chip LEDs  
Colour Variants RGBCW (CW-6300K), PW (6300K), SW (2700-7100K)  
Red/Green/Blue/White, Pure White, Smart White  
Lumen Output (Delivered) 2983lm (RGBCW at 8°), 3682lm (SW 2700-7100K at 8°)  
Beam Angle Linear motorized Zoom 8°-44° (via DMX)  
Projected Lumen Maintenance 60,000 hrs ( L70 @ 25°C / 77°F)

### CONTROL

Interface Protocol USITT DMX512 RDM  
Wireless DMX (Optional Accessory) Lumen Radio CRMX Technology  
Control System Anolis Lighting Controls or any Third Party DMX512 Controllers  
Power Supply Integral  
Stand Alone Control Yes

### PHYSICAL

Width x Height x Depth Inches: 18.19 x 11.89 x 8.35  
mm: 462 x 302 x 212  
Weight lbs: 26.57  
kg: 11.6  
Housing High Pressure Die-Cast Aluminium Body  
Tempered Glass  
Finish Options Silver (STD), Black/White/custom RAL (cost option)  
Fixture Cable and Connections Li9YC11Y - 3xAWG16+1 (2xAWG24) + Junction Box  
Fixing Method Stirrup / Floor Stand (Optional)  
Adjustability -50° / +90°  
IP Rating IP67 (IP66 Junction Box)  
IK Rating IK10  
Cooling System Convection  
Operating Ambient Temperature -20°C / +40°C (-4°F / +104°F)  
Operating Temperature +65°C @ Ambient +40°C (+149°F @ Ambient +104°F)

### CERTIFICATION

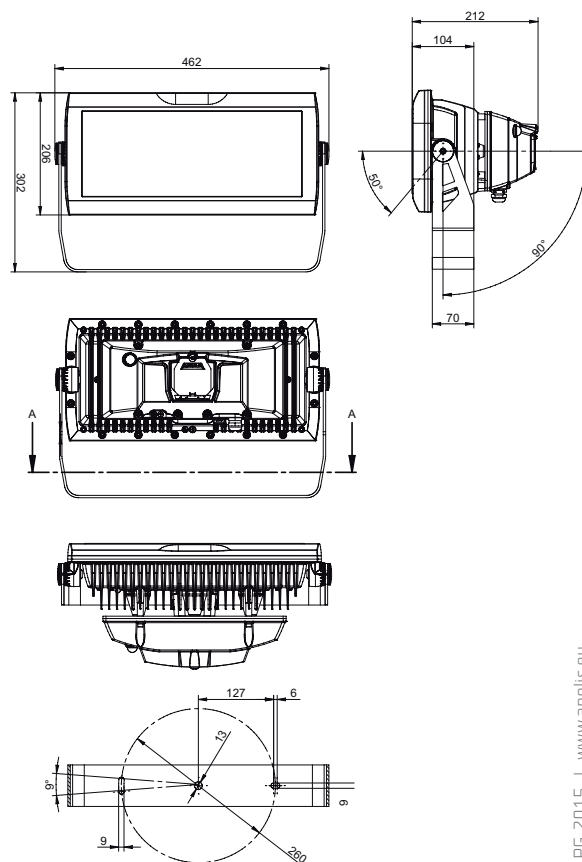
Listings ETL / cETL, CE, RoHS pending

### ACCESSORIES

Junction Box (included)  
Floor Stand  
Top Hat  
Half Top Hat



## DIMENSIONS (in mm):





Town Point Park - Norfolk, Virginia USA

# ArcSource Outdoor & Inground

Manufactured from high performance materials and with independently certified IP ratings the ArcSource Outdoor product range is the perfect companion for the widest variety of exterior lighting applications.

The Anolis ArcSource Inground range brings the high standards of the ArcSource range to the world of exterior lighting. Industry standard Inground fittings with an IP rating of 67 combined with drive overload bearings allow the dramatic effects of ArcSource to be introduced to landscape illumination.

ArcSource 1™, ArcSource 1MC™ ► Pg. 16



ArcSource Outdoor 4MC™ ► Pg. 17



ArcSource Outdoor 24MC™, 48MC™ ► Pg. 18



ArcSource Outdoor 24MC Integral™, 48MC Integral™ ► Pg. 19



ArcSource 24MC Submersible™ ► Pg. 20



ArcSource Inground 24MC Integral™ ► Pg. 21





# ArcSource 1™, ArcSource 1MC™

The Anolis ArcSource 1™ is a single colour high powered LED fixture utilising the latest high output LED. Available in 4 optical formats, marker, beam, wide or shield, the ArcSource 1™ has integrated electronic control allowing the fixture to operate on a range of AC/DC input voltages; the onboard electronic control also ensures that constant output intensity is maintained through all fixtures no matter where they are located in relation to the power supply.

The new Anolis ArcSource 1MC™, utilizes the latest LED multichip technology. The multichip LED offers seamless colour mixing offering the best homogeneous colour output from a single point source. The Anolis ArcSource 1MC™ is powered by the Anolis ArcPower range of drivers.



## TECHNICAL SPECIFICATIONS:

### ELECTRICAL

Input Voltage  
Typical Power Consumption

9-35V DC or 6-24V AC (ArcSource 1 Only)  
(1.6W ArcSource 1) (4.4W ArcSource 1MC)

### OPTICAL

Light Source  
Colour Variants

(1 x High Power Single Colour LED ArcSource 1) (1 x Multichip LED ArcSource 1MC)  
RGBW (W=CW-6500K, NW-4200K ArcSource 1MC)  
PW (3200K, 6500K ArcSource 1) (3200K, 6500K ArcSource 1MC)  
SW (2700-6500K ArcSource 1MC)  
Red/Green/Blue/White, Pure White, Smart White (ArcSource 1MC)  
54lm (CW at 9°, ArcSource 1), 126lm (RGBCW at 27°, ArcSource 1MC)  
(9°, 25°, SuperWide, Shield ArcSource 1) (27°, 35° ArcSource 1MC)  
(50,000 hrs (ArcSource 1) 60,000 hrs (ArcSource 1MC) ( L70@ 25°C / 77°F)

Lumen Output (Delivered)  
Beam Angle  
Projected Lumen Maintenance

### CONTROL

Wireless DMX (Optional Accessory)  
Control System  
Power Supply  
Stand Alone Control

N/A  
N/A  
(9-35V DC or 6-24V AC ArcSource 1) (ArcPower Range ArcSource 1MC)  
N/A

### PHYSICAL

Width x Height x Depth

Inches: (3.62 x Ø1.77 ArcSource 1) (2.18 x Ø 1.77 ArcSource 1MC)

Weight

mm: (92 x Ø45 ArcSource 1) (55.4 x Ø45 ArcSource 1MC)

lbs: (0.66 ArcSource 1) (0.44 ArcSource 1MC)

kg: (0.3 ArcSource 1) (0.2 ArcSource 1MC)

Housing

Stainless Steel Top Flange Brass Housing  
Tempered Glass

Fixture Cable and Connections

ArcSource 1 - Dlfex Robust 210 Cable, 2x 0.5mm<sup>2</sup> - 1m Long (3.3ft)  
ArcSource 1MC - LiYY 8xAWG22 - 0.5m Long (1.64ft) - Chogori IP68 Connector  
(Spring Clips ArcSource 1) (Rubber Seal ArcSource 1MC)

Fixing Method

N/A

Adjustability

IP Rating

IP68

IK Rating

IK\*\*

Cooling System

Convection

Operating Ambient Temperature

-20°C / +40°C (-4°F / +104°F)

Operating Temperature

TBC

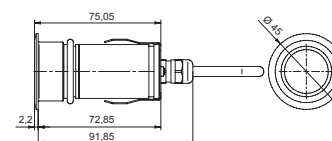
### CERTIFICATION

Listings

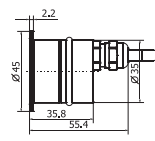
(ETL / cETL ArcSource 1MC Only), CE, RoHS

## DIMENSIONS (in mm):

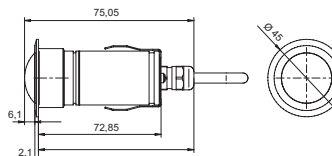
ArcSource 1



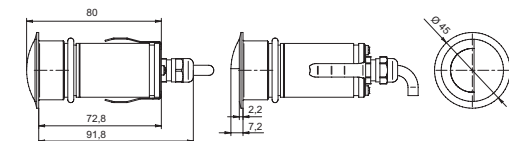
ArcSource 1MC



ArcSource 1 SuperWide



ArcSource 1 Shield



### ACCESSORIES (Accessories for ArcSource 1MC Only)

Splitter 1pcs (See Splitter Technical Guide) (Included)  
Connector Chogori CGRBDU-08BFFA (Female) IP68 (Included)  
Connector Chogori CGRBDU-08BMMA (Male) IP68  
Connector Chogori T Piece  
Connector Waterproof Cap (Male)  
Cable Chogori (Female) - RJ45 3m  
Cable Chogori (Female) - RJ45 7m  
Cable Chogori (Female) - RJ45 15m  
Cable Chogori (Female) - RJ45 20m  
other lengths on request  
Spring Clip



# ArcSource Outdoor 4MC™

The ArcSource Outdoor 4MC™ offers a high light output from the latest LED multichip technology, along with a full range of precision optics. With an IP rating of 67 this product is ideal for outdoor lighting applications, offering solutions to many landscape lighting scenarios. With its stirrup mounting the product has a complete range of movement, which can easily be fixed to stop once product is in the ideal position. Landscape accessories such as the ground spike ensure a wide range of installation options.



IP67



## TECHNICAL SPECIFICATIONS:

### ELECTRICAL

Input Voltage  
Typical Power Consumption

48V DC  
6W @ 350mA (10W @ 700mA)

### OPTICAL

Light Source  
Colour Variants

1 x 10W Multi-Chip LED  
RGBW (W-CW-6500K, NW-4200K), PW (3200K, 6500K),  
SW (2700-6500K)  
Red/Green/Blue/White, Pure White, Smart White

Lumen Output (Delivered)  
Beam Angle  
Projected Lumen Maintenance

364lm (RGBCW at 11°, 700mA)  
11°, 26°, 36°  
50,000 hrs ( L70@ 25°C / 77°F)

### CONTROL

Wireless DMX (Optional Accessory)  
Control System  
Power Supply  
Stand Alone Control  
Width x Height x Depth

N/A  
Anolis Lighting Controls or any Third Party DMX512 Controllers  
ArcPower Range  
N/A  
Inches: 2.52 x 4.49 (5.71) x 3.54  
mm: 64 x 114 (145) x 90

Weight

lbs: 1.37  
kg: 0.62

Housing

High Pressure Die-Cast Aluminium Body  
Tempered Glass

Finish Option

Silver (STD), Black/White/custom RAL (cost option)

Fixture Cable and Connections

LiYY 8xAWG22 - 0.5m Long (1.64ft) - Chogori IP68 Connector

Fixing Method

Mounting Plate (3 Fixing Holes) Spike Option

Adjustability

+/-60° (+80° -90° with Leg Adaptor)

IP Rating

IP67

IK Rating

IK\*\*

Cooling System

Convection

Operating Ambient Temperature

-20°C / +45°C (-4°F / +113°F)

Operating Temperature

+75°C @ Ambient +50°C (+167°F @ Ambient +122°F)

### CERTIFICATION

Listings

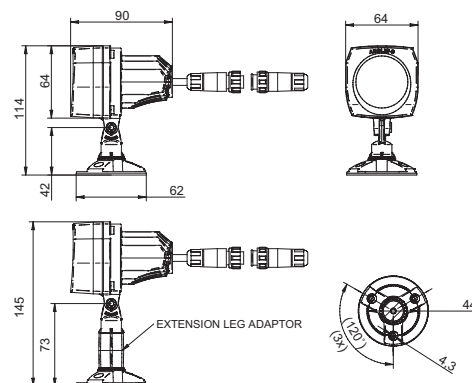
ETL / cETL, CE, RoHS

### ACCESSORIES

Allen Key (Included)  
Connector Chogori CGRBDU-08BFFA (Female) IP68 (included)  
Adaptor Stand (included)  
Screw M5x45 (Included)



## DIMENSIONS (in mm):



### ACCESSORIES

Land Spike Single (100mm)  
Land Spike Twin (100mm)  
Land Spike Single (500mm)  
Land Spike Twin (500mm)  
Lamp Spike Triple (500mm)  
Top Hat, Half Top Hat  
Connector Chogori CGRBDU-08BFFA (Female) IP68  
Connector Chogori CGRBDU-08BFFA (Male) IP68  
Connector Chogori T Piece  
Connector Waterproof Cap (Male)  
Cable Chogori (Female) - RJ45 0.25m  
Cable Chogori (Female) - RJ45 3m  
Cable Chogori (Female) - RJ45 7m  
Cable Chogori (Female) - RJ45 15m  
Cable Chogori (Female) - RJ45 20m  
Cable Chogori (Female) - Chogori (Male) 3m  
other lengths on request

# ArcSource Outdoor 24MC™, 48MC™

Both ArcSource Outdoor 24MC™ and ArcSource Outdoor 48MC™ offer a high lumen output from the latest LED technology, along with a wide range of optics. With its IP67 rating these products are ideal for outdoor lighting applications, benefiting from totally flushmounted “Watch Glass” frontage meaning the units are less likely to suffer a debris build-up resulting in greater performance and lower maintenance.

The ArcSource Outdoor 24MC™ incorporates 6 high output multichip LEDs in a compact aluminium housing. The ArcSource Outdoor 48MC™ with its 12 high output multichip LEDs offers a larger lumen output. Both products offer a solution to a wide variety of lighting scenarios.



## TECHNICAL SPECIFICATIONS:

### ELECTRICAL

Input Voltage  
Typical Power Consumption

48V DC  
24MC (60W) 48MC (120W), +/- 10%

### OPTICAL

Light Source  
Colour Variants

24MC (6 x 10W Multi-Chip LEDs) 48MC (12 x 10W Multi-Chip LEDs)  
RGBW (W=CW-6500K, NW-4200K), PW (3200K, 6500K),  
SW (2700-6500K)

Red/Green/Blue/White, Pure White, Smart White

Lumen Output (Delivered)  
Beam Angle  
Projected Lumen Maintenance

24MC: 1951lm (RGBCW at 11°, 700mA), 48MC: 3978lm (RGBCW at 11°, 700mA)  
11°, 26°, 36°  
60,000 hrs ( L70@ 25°C / 77°F)

### CONTROL

Wireless DMX (Optional Accessory)  
Control System  
Power Supply  
Stand Alone Control

N/A  
Anolis Lighting Controls or any Third Party DMX512 Controllers  
ArcPower Range  
N/A

### PHYSICAL

Width x Height x Depth

Inches: 24MC (8.5 x 10.28 x 5.91) 48MC (12.21 x 13.7 x 6.69)  
mm: 24MC (216 x 261 x 150) 48MC (310 x 348 x 170)

Weight

lbs: 24MC (9.48) 48MC (18.29)  
kg: 24MC (4.3) 48MC (8.3)

Housing

High Pressure Die-Cast Aluminium Body  
Tempered Glass

Finish Options

Silver (STD), Black/White/custom RAL (cost option)

Fixture Cable and Connections

LiYY 8xAWG22 - 0.5m Long (1.64ft) - Chogori IP68 Connector

Fixing Method

Stirrup / Floor Stand (Optional)

Adjustability

+35° -90°

IP Rating

IP67

IK Rating

IK\*\*

Cooling System

Convection

Operating Ambient Temperature

-20°C / +40°C (-4°F / +104°F)

Operating Temperature

+75°C @ Ambient +40°C (+167°F @ Ambient +104°F )

### CERTIFICATION

Listings

ETL / cETL , CE, RoHS

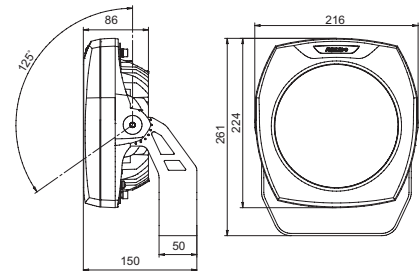
### ACCESSORIES

Connector Chogori C6RBDU-08BFFA (Female) IP68 (included)  
Top Hat  
Half Top Hat  
Floor Stand

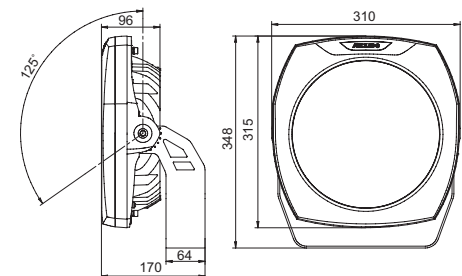


## DIMENSIONS (in mm):

ArcSource Outdoor 24MC



ArcSource Outdoor 48MC



# ArcSource Outdoor 24MC Integral™, 48MC Integral™

The Anolis ArcSource Outdoor 24MC™ and 48MC™ Integral range offers all the benefits of the standard product – high lumen output and range of optics, while also incorporating an integral power supply, for when remote power supplies are not an option. Both ArcSource 24 Integral™ and 48 Integral™ have an IP rating of 67. There is a wireless option available minimizing the installation process and associated costs.



IP67



## TECHNICAL SPECIFICATIONS:

### ELECTRICAL

Input Voltage  
Typical Power Consumption

100-240 VAC, 50/60 Hz  
24MC (60W @ 230V) 48MC (120W @ 230V), +/- 10%

### OPTICAL

Light Source  
Colour Variants

24MC (6 x 10W Multi-Chip LEDs) 48MC (12 x 10W Multi-Chip LEDs)  
RGBW (W=CW-6500K, NW-4200K), PW (3200K, 6500K), SW (2700-6500K)  
Red/Green/Blue/White, Pure White, Smart White  
24MC: 1951lm (RGBCW at 11°, 700mA), 48MC: 3978lm (RGBCW at 11°, 700mA)  
11°, 26°, 36°  
60,000 hrs ( L70@ 25°C / 77°F)

### CONTROL

Interface Protocol  
Wireless DMX (Optional Accessory)  
Control System  
Power Supply  
Stand Alone Control

DMX 512  
Lumen Radio CRMX Technology  
Anolis Lighting Controls or any Third Party DMX512 Controllers  
Integral  
Yes

### PHYSICAL

Width x Height x Depth

Inches: 24MC (8.5 x 10.28 x 7.87) 48MC (12.21 x 13.7 x 9.06)  
mm: 24MC (216 x 261 x 200) 48MC (310 x 348 x 230)

Weight

lbs: 4MC (12.6) 48MC (23.8)  
kg: 24MC (5.7) 48MC (10.8)

Housing  
Finish Options  
Fixture Cable and Connections  
Fixing Method  
Adjustability  
IP Rating  
IK Rating  
Cooling System  
Operating Ambient Temperature  
Operating Temperature

High Pressure Die-Cast Aluminium Body Tempered Glass  
Silver (STD), Black/White/custom RAL (cost option)  
Li9Y11Y - 3xAWG16+1 (2xAWG24) + Junction Box  
Stirrup / Floor Stand (Optional)  
+35° -90°  
IP67 (IP66 Junction Box)  
IK\*\*  
Convection  
-20°C / +40°C (-4°F / +104°F)  
+80°C @ Ambient +40°C (+176°F @ Ambient +104°F)

### CERTIFICATION

Listings

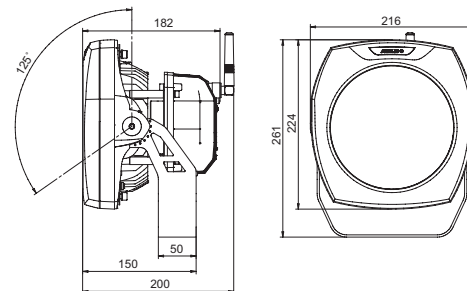
ETL / cETL, CE, RoHS

### ACCESSORIES

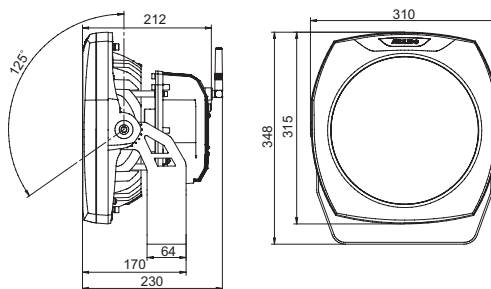
Junction Box (included)  
Gasket Cable Grommet M20 (included)  
Top Hat  
Half Top Hat  
Floor Stand

## DIMENSIONS (in mm):

ArcSource Outdoor 24MC Integral



ArcSource Outdoor 48MC Integral



# ArcSource 24MC Submersible™

Following the success for the Anolis ArcSource Outdoor 24MC™, the ArcSource 24MC Submersible™ has a housing crafted from the highest quality Marine Grade Bronze meaning it is able to withstand the very harshest environmental conditions. With an IP rating of 68 at 10 meters ArcSource 24MC Submersible™ can be specified with confidence for a wide variety of underwater applications.



## TECHNICAL SPECIFICATIONS:

### ELECTRICAL

Input Voltage	24V DC
Typical Power Consumption	35W (Standard Mode, 350mA), 75W (High Power Mode, 700mA)

### OPTICAL

Light Source	6 x 10W Multi-Chip LEDs
Colour Variants	RGBW (W=CW-6300K), PW (6300K), SW (2700-7100K) Red/Green/Blue/White, Pure White, Smart White
Lumen Output (Delivered)	1433lm (RGBCW at 7°, full mode), 938lm (RGBCW at 7°, eco mode)
Beam Angle	7°, 24°, 34°
Projected Lumen Maintenance	60,000 hrs ( L70@ 25°C / 77°F)

### CONTROL

Wireless DMX (Optional Accessory)	N/A
Control System	ArcPower 24MC (24V)
Power Supply	ArcPower 24MC (24V)
Stand Alone Control	Yes

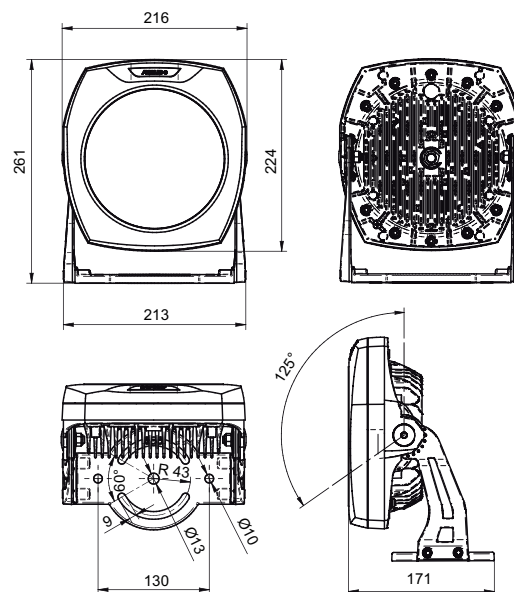
### PHYSICAL

Width x Height x Depth	Inches: 8.5 x 10.28 x 6.73 mm: 216 x 261 x 171
Weight	lbs: 23.1 kg: 10.5
Housing	Marine Bronze Tempered Glass
Fixture Cable and Connections	Paige P7342-SP, custom length
Fixing Method	Stirrup
Adjustability	-35° +90°
IP Rating	IP68 - 10m
IK Rating	IK10
Cooling System	Convection
Operating Ambient Temperature	-20°C / +40°C (-4°F / +104°F)
Operating Temperature	TBC

### CERTIFICATION

Listings	ETL / cETL, CE, RoHS pending
----------	------------------------------

## DIMENSIONS (in mm):





new

ArcSource Outdoor & Inground

# ArcSource Inground 24MC Integral™

The brand new ArcSource Inground 24MC Integral™ is packed with exciting new features to simplify inground installations. High light output is achieved via 6 x 10 Watt High Power multichip LEDs. A variety of optics is available from narrow to wide as well as an asymmetrical option. The light source can be remotely tilted +/- 15° from the horizontal position, insuring accurate illumination of the selected surface, with both power supply and control built-in, retro-fitting to existing installations becomes possible. With use of the wireless control option only mains power is required at the fitting location.



## TECHNICAL SPECIFICATIONS:

### ELECTRICAL

Input Voltage 100-277V AC, 50/60 Hz  
Typical Power Consumption 65W @ 230V, +/- 10%

### OPTICAL

Light Source 6 x 10W Multi-Chip LEDs  
Colour Variants RGBW (W=CW-6300K), PW (6300K), SW (2700-7100K)  
Red/Green/Blue/White, Pure White, Smart White  
Lumen Output (Delivered) 1540lm (RGBCW at 7°)  
Beam Angle 7°, 24°, 34°, 42°x7°, 7°x42°  
Projected Lumen Maintenance 60,000 hrs ( L70@ 25°C / 77°F)

### CONTROL

Interface Protocol DMX512  
Wireless DMX (Optional Accessory) Lumen Radio CRMX Technology  
Control System Anolis Lighting Controls or any Third Party DMX512 Controllers  
Power Supply Integral  
Stand Alone Control Yes

### PHYSICAL

Width x Height x Depth Inches: ø12.6 x 15.75  
mm: ø320 x 400  
Weight lbs: 40.1  
kg: 18.2  
Housing High Pressure Die-Cast Aluminium Body - Stainless Steel Flange  
Tempered Glass  
Fixture Cable and Connections Integral Junction Box  
Fixing Method External Sleeve  
Adjustability Motorized Tilt +/-15°  
IP Rating IP67  
IK Rating IK10  
Cooling System Convection  
Operating Ambient Temperature -20°C / +40°C (-4°F / +104°F)  
Operating Temperature +55°C @ Ambient +40°C (+131°F @ Ambient +104°F)

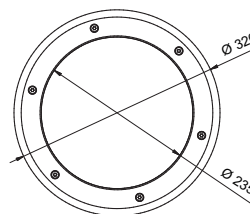
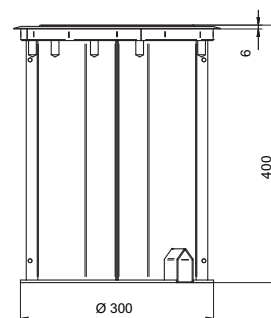
### CERTIFICATION

Listings ETL / cETL, CE, RoHS

### ACCESSORIES

Top Installation Cover (included)

## DIMENSIONS (in mm):





Blue Martini - Orlando, USA

# ArcSource Indoor

The Anolis ArcSource Indoor range combines state of the art lighting technology with industry standard dimensions to create truly specifier-class lighting systems. Using only the finest materials and precision manufacturing techniques the Anolis ArcSource provides the professional solution for your lighting requirements.

ArcSource Indoor

ArcSource 4MC™ ► Pg. 24



ArcSource 12™, ArcSource 12 SmartWhite™ ► Pg. 25



# ArcSource 4MC™

ArcSource 4MC™ - with spectacular performance and seamless colour mixing, ArcSource 4 MC™ renders the best homogeneous colour output and most precise single-point-of-colour emission. Advanced cooling and driving technologies have been optimized to give maximum light output, and together with the longevity of the LEDs, this is a very energy efficient architectural fixture.



## TECHNICAL SPECIFICATIONS:

### ELECTRICAL

Input Voltage 48V DC  
Typical Power Consumption 4.4W

### OPTICAL

Light Source 1 x 4W Multi-Chip LED  
Colour Variants RGBW (W=CW-6500K, NW-4200K), PW (3200K, 6500K), SW (2700-6500K)  
Red/Green/Blue/White, Pure White, Smart White  
Lumen Output (Delivered) 200lm (RGBCW at 16°)  
Beam Angle 16°, 29° (18°, 28° With Diffuser)  
Projected Lumen Maintenance 60,000 hrs ( L70 @ 25°C / 77°F)

### CONTROL

Wireless DMX (Optional Accessory) N/A  
Control System N/A  
Power Supply ArcPower Range  
Stand Alone Control N/A

### PHYSICAL

Width x Height x Depth Inches: 3.58 x ø1.97  
mm: 91 x ø50  
Weight lbs: 0.55  
kg: 0.25  
Housing Precision Turned Aluminium  
Fixture Cable and Connections 24 AWG x 4P Cat 5 - 1.5m (4.92ft) - RJ45  
Fixing Method MR16 Housing Supplied and Spring Clip  
Adjustability N/A  
IP Rating IP2X  
IK Rating IK\*\*  
Cooling System Convection  
Operating Ambient Temperature -20°C / +40°C (-4°F / +104°F)  
Operating Temperature 58°C @ Ambient +40°C (+136°F @ Ambient +104°F)

### CERTIFICATION

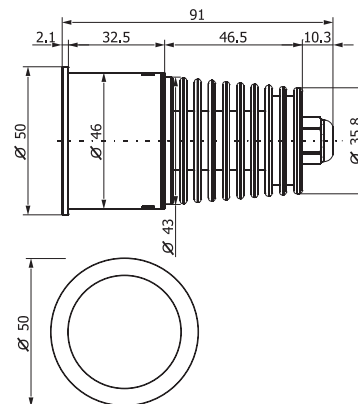
Listings ETL / cETL, CE, RoHS

### ACCESSORIES

Splitter 1pcs (included)  
Diffuser 1pc (included)  
MR16 Housing (included)



## DIMENSIONS (in mm):



## ACCESSORIES:

MR-16 Housing (included)





# ArcSource 12™, ArcSource 12 SmartWhite™

The Anolis ArcSource 12™ combines state of the art lighting technology within an industry standard AR-111 size fitting to create a truly specifier class lighting product. The highest quality optical system ensures that the desired effect can be achieved in the widest range of applications possible. Utilising high powered LEDs the Anolis ArcSource 12™ RGB is unsurpassed in performance, reliability and quality.



## TECHNICAL SPECIFICATIONS:

### ELECTRICAL

Input Voltage	48V DC
Typical Power Consumption	13.6W

### OPTICAL

Light Source	12 x 1W LEDs
Colour Variants	RGBW (W-WW-3200K, CW-6500K), RGB, R, G, B, A, PW (3200K, 4300K, 6500K), SW (3200-6500K) Red/Green/Blue/White, Red, Green, Blue, Amber, Pure White, Smart White
Lumen Output (Delivered)	515lm (RGB at 10°)
Beam Angle	10°, 18°, 29°, 32° 14°, 23°, 31°, 36° SmartWhite
Projected Lumen Maintenance	50,000 hrs ( L70 @ 25°C / 77°F)

### CONTROL

Wireless DMX (Optional Accessory)	N/A
Control System	N/A
Power Supply	ArcPower Range
Stand Alone Control	N/A

### PHYSICAL

Width x Height x Depth	Inches: 2.13 x ø4.37 mm: 54 x ø111
Weight	lbs: 1.32 kg: 0.6
Housing	Precision Turned Aluminium Glass Cover
Fixture Cables and Connections	24 AWG x 4P Cat 5 - 1.5m (4.92ft) - RJ45
Fixing Method	AR111 Housing and Spring Clip (NOT SUPPLIED)
Adjustability	N/A
IP Rating	IP2X
IK Rating	IK**
Cooling System	Convection
Operating Ambient Temperature	-20°C / +40°C (-4°F / +104°F)
Operating Temperature	+60°C @ Ambient +25°C (+140°F @ Ambient +77°F)

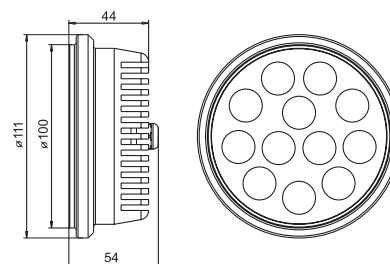
### CERTIFICATION

Listings	CE, RoHS
----------	----------

### ACCESSORIES

Splitter 1pcs (See Splitter Technical Guide)
--

## DIMENSIONS (in mm):





**Millionaire Lounge Cafe** - Rimini, Italy

# ArcLine Outdoor & Mini Outdoor

With a balanced design profile and by using the highest quality materials the ArcLine Outdoor brings the flexibility of the ArcLine range to the outdoor world.

Available in either single or double configurations and using the latest high-powered LEDs the ArcLine Outdoor is the perfect solution for both landscape and building illumination. With an IP rating of 65 the ArcLine Outdoor is suitable for the most demanding of exterior installations.

ArcLine Outdoor Optic 20MC™, 40MC™ ► **Pg. 28**



ArcLine Outdoor Optic 20MC SW™, 40MC SW™ ► **Pg. 29**



ArcLine Outdoor Optic 6™, 12™, 18™, 24™, 36™ ► **Pg. 30**



ArcLine Double Outdoor Optic 24™, 36™, 48™, 72™ ► **Pg. 31**



ArcLine Outdoor Optic POB 9™, 13™, 27™, 33™ ► **Pg. 32**



ArcLine Mini Outdoor 9™, 12™, 18™, 27™, 36™ ► **Pg. 33**



# ArcLine Outdoor Optic 20MC™, 40MC™

Utilizing the latest research for the design and manufacturing process, the ArcLine Outdoor Optic MC brings the supreme reliability and quality of the ArcLine range to the outdoor world. Smooth colour mixing is ensured by using a new generation of high-powered LED multichips, combined with the best homogeneous colour distribution system and precise single-point-of-colour emission. Combined with the high light output and longevity of the LEDs and user-definable colour variants, the Anolis ArcLine Outdoor sets the standard for all types of contemporary exterior lighting schemes.



IP65



## TECHNICAL SPECIFICATIONS:

### ELECTRICAL

Input Voltage 48V DC  
Typical Power Consumption 22W (20MC), 44W (40MC)

### OPTICAL

Light Source 5 x (20MC), 10 x (40MC) High Power LEDs  
Colour Variants RGBW (W=CW-6500K, NW-4200K)  
Red / Green / Blue / White  
Lumen Output (Delivered) 20MC: 1114lm (RGBCW at 27°, 350mA)  
40MC: 2208lm (RGBCW at 27°, 350mA)

Beam Angle 27°, 36°, 21°x36°  
Projected Lumen Maintenance 60,000 hrs ( L70@ 25°C / 77°F)

### CONTROL

Wireless DMX (Optional Accessory) N/A  
Control System Anolis Lighting Controls or any Third Party DMX512 Controllers  
Power Supply ArcPower Range  
Stand Alone Control N/A

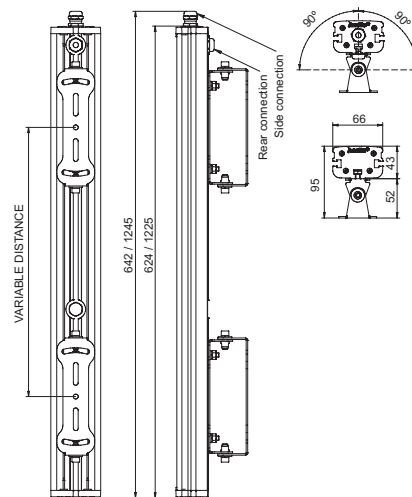
### PHYSICAL

Width x Height x Depth Inches: 25.28, 49.01 x 3.74 x 2.6  
mm: 642, 1245 x 95 x 66  
Weight lbs: 7.06, 12.8  
kg: 3.2, 5.8  
Housing Extruded Aluminium  
Glass cover  
Finish Options Silver (STD), Black/White/custom RAL (cost option)  
Fixture Cable and Connections LiYY 8xAWG22 - 0.5m Long (1.64ft) - Chogori IP68 Connector  
Fixing Method Mounting Brackets  
Adjustability +/- 90°  
IP Rating IP65  
IK Rating IK08  
Cooling system Convection  
Operating Ambient Temperature -20°C / +40°C (-4°F / +104°F)  
Operating Temperature +50°C @ Ambient +40°C (+122°F @ Ambient +104°F)

### CERTIFICATION

Listings ETL / cETL, CE, RoHS

## DIMENSIONS (in mm):



### ACCESSORIES

Allen Key (Included)  
Connector Chogori CGRBDU-08BFFA (Female) IP68 (Included)  
Connector Chogori CGRBDU-08BMMA (Male) IP68  
Connector Chogori T Piece  
Connector Waterproof Cap (Male)  
Cable Chogori (Female) - RJ45 3m  
Cable Chogori (Female) - RJ45 7m  
Cable Chogori (Female) - RJ45 15m  
Cable Chogori (Female) - RJ45 20m  
other lengths on request

# ArcLine Outdoor Optic 20MC SW™, 40MC SW™

With all the benefits of the ArcLine Outdoor 20/40MC™ including supreme reliability, high IP rating and quality optics, the ArcLine Outdoor Optic 20/40MC SW™ allows dramatic dynamic white effects for building washing in a wide range of colour temperatures to suit a variety of architectural applications.

Precise DMX control allows the output to smoothly fade from rich warm whites to clean crisp cool white transforming the surrounding environment.



## TECHNICAL SPECIFICATIONS:

### ELECTRICAL

Input Voltage 48V DC  
Typical Power Consumption 22W (20MC), 44W (40MC)

### OPTICAL

Light Source 5 x (20MC), 10 x (40MC) High Power LEDs  
Colour Variants SW (2700-6500K), PW (3200K, 6500K)  
Smart White, Pure White  
Beam Angle 27°, 36°, 21°x36°  
Projected Lumen Maintenance 60,000 hrs ( L70 @ 25°C / 77°F)

### CONTROL

Wireless DMX (Optional Accessory) N/A  
Control System Anolis Lighting Controls or any Third Party DMX512 Controllers  
Power Supply ArcPower Range  
Stand Alone Control N/A

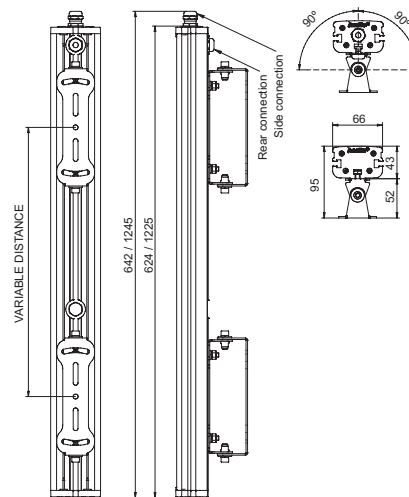
### PHYSICAL

Width x Height x Depth Inches: 25.28, 49.01 x 3.74 x 2.6  
mm: 642, 1245 x 95 x 66  
Weight lbs: 7.06, 12.8  
kg: 3.2, 5.8  
Housing Extruded Aluminium  
Glass cover  
Finish Options Silver (STD), Black/White/custom RAL (cost option)  
Fixture Cable and Connections LiYY 8xAWG22 - 0.5m Long (1.64ft) - Chogori IP68 Connector  
Fixing Method Mounting Brackets  
Adjustability +/-90°  
IP Rating IP65  
IK Rating IK08  
Cooling system Convection  
Operating Ambient Temperature -20°C / +40°C (-4°F / +104°F)  
Operating Temperature +50°C @ Ambient +40°C [+122°F @ Ambient +104°F]

### CERTIFICATION

Listings ETL / cETL, CE, RoHS

## DIMENSIONS (in mm):



### ACCESSORIES

Allen Key (Included)  
Connector Chogori CGRBDU-08BFFA (Female) IP68 (Included)  
Connector Chogori CGRBDU-08BMMA (Male) IP68  
Connector Chogori T Piece  
Connector Waterproof Cap (Male)  
Cable Chogori (Female) - RJ45 3m  
Cable Chogori (Female) - RJ45 7m  
Cable Chogori (Female) - RJ45 15m  
Cable Chogori (Female) - RJ45 20m  
other lengths on request



# ArcLine Outdoor Optic 6™, 12™, 18™, 24™, 36™

With a balanced design profile and by using the highest quality materials, the ArcLine Outdoor Optic brings the flexibility of the ArcLine range to the outdoor world.

Available in either single or double configurations and using the latest high-powered LEDs the ArcLine Outdoor is the perfect solution for both landscape and building illumination. With an IP rating of 65 the ArcLine Outdoor will be suitable for the toughest exterior installations. Power and control is provided by the ArcPower 36, 72, 144, 360.



IP65



## TECHNICAL SPECIFICATIONS:

### ELECTRICAL

Input Voltage 48V DC  
Typical Power Consumption 6.8W, 13.6W, 20.4W, 27.2W, 40.8W

### OPTICAL

Light Source 6, 12, 18, 24, 36, x High Power LEDs  
Colour Variants RGBW (W=WW-3200K, CW-6500K), RGB, R, G, B, A, PW (3200K, 4300K, 6500K), SW (3200-6500K)  
Red/Green/Blue/White, Red, Green, Blue, Amber, Pure White, Smart White  
Lumen Output (Delivered) 36: 1738lm (RGB at 13°, 350mA), 3534lm (PW 3000K at 16°, 360mA)  
Beam Angle RGB/RGBW: 12°, 19°, 25°, 31°, 47°x11°  
CW/WW/SW: 16°, 25°, 28°, 35°, 45°x18°  
Projected Lumen Maintenance 50,000 hrs ( L70@ 25°C / 77°F)

### CONTROL

Wireless DMX (Optional Accessory) N/A  
Control System Anolis Lighting Controls or any Third Party DMX512 Controllers  
Power Supply ArcPower Range  
Stand Alone Control N/A

### PHYSICAL

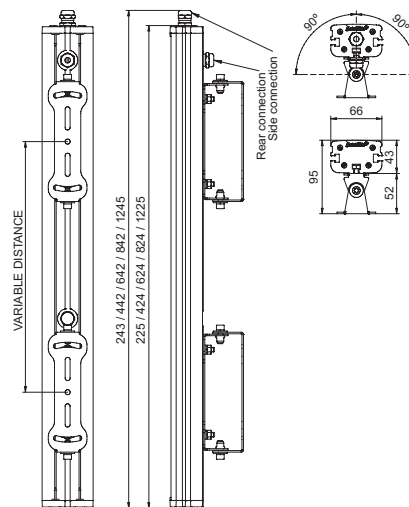
Width x Height x Depth Inches: 9.57, 17.4, 25.28, 33.15, 49.01 x 3.74 x 2.6  
mm: 243, 442, 642, 842, 1245 x 95 x 66  
Weight lbs: 2.43, 4.41, 7.72, 8.82, 11.91  
kg: 1.1, 2, 3.5, 4, 5.4  
Housing Extruded Aluminium  
Glass cover  
Finish Options Silver (STD), Black/White/custom RAL (cost option)  
Fixture Cable and Connections LIYY 8xAWG22 - 0.5m Long (1.64ft) - Chogori IP68 Connector  
Fixing Method Mounting Brackets  
Adjustability +/-90°  
IP Rating IP65  
IK Rating IK08  
Cooling system Convection  
Operating Ambient Temperature -20°C / +40°C (-4°F / +104°F)  
Operating Temperature +50°C @ Ambient +40°C (+122°F @ Ambient +104°F)

### CERTIFICATION

Listings ETL / cETL, CE, RoHS



## DIMENSIONS (in mm):



### ACCESSORIES

Allen Key (Included)  
Connector Chogori C6RBDU-08BFFA (Female) IP68 (Included)  
Connector Chogori C6RBDU-08BMMA (Male) IP68  
Connector Chogori T Piece  
Connector Waterproof Cap (Male)  
Cable Chogori (Female) - RJ45 3m  
Cable Chogori (Female) - RJ45 7m  
Cable Chogori (Female) - RJ45 15m  
Cable Chogori (Female) - RJ45 20m  
other lengths on request

# ArcLine Double Outdoor Optic™ 24™, 36™, 48™, 72™

With a balanced design profile and by using the highest quality materials the ArcLine Outdoor Optic™ brings the flexibility of the ArcLine™ range to the outdoor world.

Available in either single or double configurations and using the latest high-powered LEDs the ArcLine Outdoor™ is the perfect solution for both landscape and building illumination. With an IP rating of 65 the ArcLine Outdoor™ will be suitable for the most demanding exterior installations. Power and control provided by the ArcPower 36™, 72™, 144™, 360™.



## TECHNICAL SPECIFICATIONS:

### ELECTRICAL

Input Voltage 48V DC  
Typical Power Consumption 27.2W, 40.8W, 54.4W, 81.6W

### OPTICAL

Light Source 24, 36, 48, 72 High Power LEDs  
Colour Variants RGBW (W-WW-3200K, CW-6500K), RGB, R, G, B, A, PW (3200K, 4300K, 6500K), SW (3200-6500K)  
Red/Green/Blue/White, Red, Green, Blue, Amber, Pure White, Smart White  
Lumen Output (Delivered) 72: 3476lm (RGB at 13°, 350mA), 6816lm (PW 3200K at 16°, 350mA)  
Beam Angle RGB/RGBW: 13°, 21°, 26°, 28°, 47°x12°  
CW/WW/SW: 16°, 25°, 28°, 30°, 45°x18°  
Projected Lumen Maintenance 50,000 hrs ( L70 @ 25°C / 77°F)

### CONTROL

Wireless DMX (Optional Accessory) N/A  
Control System Anolis Lighting Controls or any Third Party DMX512 Controllers  
Power Supply ArcPower Range  
Stand Alone Control N/A

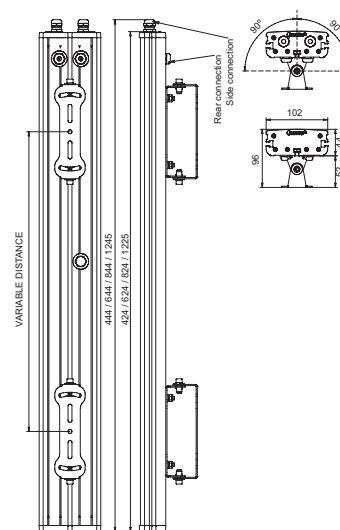
### PHYSICAL

Width x Height x Depth Inches: 17.48, 25.35, 33.23, 49.01 x 3.78 x 4.02  
mm: 444, 644, 844, 1245 x 96 x 102  
Weight lbs: 4.9, 10.3, 12.13, 18.12  
kg: 3.21, 4.6, 5.8, 8.5  
Housing Extruded Aluminium  
Glass cover  
Finish Options Silver (STD), Black/White/custom RAL (cost option)  
Fixture Cable and Connections LiYY 8xAWG22 - 1x(2x) 0.5m Long (1.64ft) - Chogori IP68 Connector  
Fixing Method Mounting Brackets  
Adjustability +/-60°  
IP Rating IP65  
IK Rating IK\*\*  
Cooling system Convection  
Operating Ambient Temperature -20°C / +40°C (-4°F / +104°F)  
Operating Temperature +50°C @ Ambient +40°C (+122°F @ Ambient +104°F)

### CERTIFICATION

Listings CE, RoHS, ETL / cETL

## DIMENSIONS (in mm):



### ACCESSORIES

Allen Key (Included)  
Connector Chogori C6RBDU-08BFFA (Female) IP68 (Included)  
Connector Chogori C6RBDU-08BMMA (Male) IP68  
Connector Chogori T Piece  
Connector Waterproof Cap (Male)  
Cable Chogori (Female) - RJ45 3m  
Cable Chogori (Female) - RJ45 7m  
Cable Chogori (Female) - RJ45 15m  
Cable Chogori (Female) - RJ45 20m  
other lengths on request

# ArcLine Outdoor Optic POB 9™, 13™, 27™, 33™

When no dimming or control is required the ArcLine Outdoor Optic POB™ (Power on board) is available in a variety of saturated colours as well as a range of white colour temperatures, all this combined with the balanced design profile of the ArcLine Outdoor™ and a range of quality optics creates a truly versatile linear lighting solution.



## TECHNICAL SPECIFICATIONS:

### ELECTRICAL

Input Voltage 230V AC +/-20%  
Typical Power Consumption 11W, 14W, 30.5W, 36W

### OPTICAL

Light Source 9, 13, 27, 33 x High Power LEDs  
Colour Variants PW (3000K, 4000K, 6500K), R, G, B, A  
Pure White, Red, Green, Blue, Amber  
Lumen Output (Delivered) 33: 2614lm (PW 3000K at 24°)  
Beam Angle 6°, 24°, 46°, 25°x6°  
Projected Lumen Maintenance 60,000 hrs ( L70@ 25°C / 77°F)

### CONTROL

Wireless DMX (Optional Accessory) N/A  
Control System N/A  
Power Supply N/A  
Stand Alone Control N/A

### PHYSICAL

Width x Height x Depth Inches: 16.18, 23.19, 47.68, 58.19 x 3.74 x 2.60  
mm: 411, 589, 1211, 1478 x 95 x 66  
Weight lbs: 3.9, 5.07, 10.4, 12.35  
kg: 1.75, 2.3, 4.7, 5.6  
Housing Extruded Aluminium  
Glass cover  
Finish Options Silver (STD), Black/White/custom RAL (cost option)  
Fixture Cable and Connections H05 RR-F 3x0.75m  
Fixing Method Mounting Brackets  
Adjustability +/- 90°  
IP Rating IP65  
IK Rating IK08  
Cooling system Convection  
Operating Ambient Temperature -20°C / +40°C (-4°F / +104°F)  
Operating Temperature +50°C @ Ambient +40°C (+122°F @ Ambient +104°F)

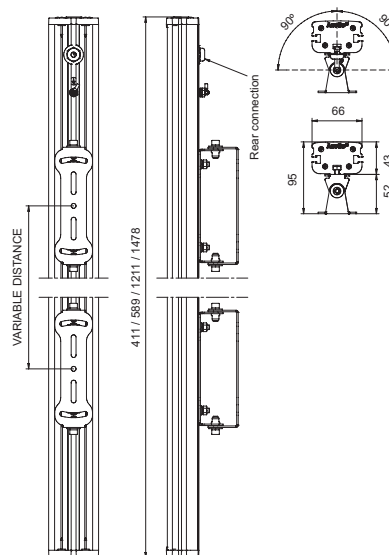
### CERTIFICATION

Listings CE, RoHS

### ACCESSORIES

Allen Key (Included)

## DIMENSIONS (in mm):



# ArcLine Mini Outdoor 9™, 12™, 18™, 27™, 36™

ArcLine Mini Outdoor™ combines the latest high output Luxeon Rebel LEDs with extremely compact custom extruded housing, with a diameter of only 27 mm allowing a high-powered linear LED solution for areas previously inaccessible for traditionally larger linear fittings.

Suitable for indoor applications as well as exterior due to a high IP rating, ArcLine Mini Outdoor™ provides a wide range of static white and various colour configurations bringing dynamic lighting schemes to life.



## TECHNICAL SPECIFICATIONS:

### ELECTRICAL

Input Voltage 48V DC  
Typical Power Consumption 10.2W, 13.1W, 20.4W, 30.6W, 41W

### OPTICAL

Light Source 9, 12, 18, 27, 36 High Power LEDs  
Colour Variants RGB, R, G, B, PW (3000K, 4000K, 6500K), SW (3000-6500K)  
Red/Green/Blue, Red, Green, Blue, Pure White, Smart White  
Lumen Output (Delivered) 36: 1023lm (RGB at 13°), 1431lm (PW 3000K, non-optic)  
Beam Angle Non-Optic  
Projected Lumen Maintenance 60,000 hrs ( L70@ 25°C / 77°F)

### CONTROL

Wireless DMX (Optional Accessory) N/A  
Control System Anolis Lighting Controls or any Third Party DMX512 Controllers  
Power Supply ArcPower Range  
Stand Alone Control N/A

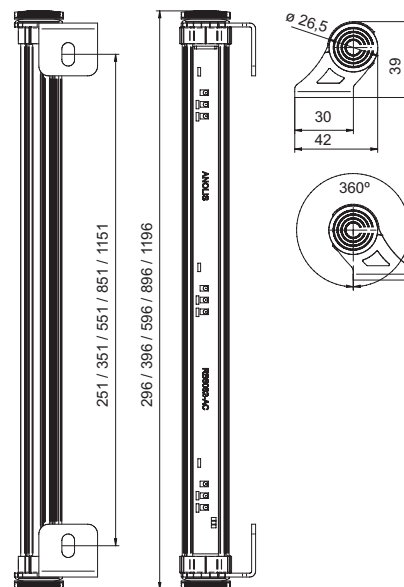
### PHYSICAL

Width x Height x Depth Inches: 9.88, 13.82, 21.69, 33.5, 45.32 x 1.54 x 1.65  
mm: 251, 351, 551, 851, 1151 x 39 x 42  
Weight lbs: 0.42, 0.57, 0.84, 1.26, 1.70  
kg: 0.19, 0.26, 0.38, 0.57, 0.77  
Housing Extruded Aluminium  
Silicone cover  
Fixture Cable and Connections Igus CF9.03.04 - 0.5m Long - Chogori IP68 Connector  
In/Out version: Igus CF9.03.04 - 2x0.5m Long (2x1.64ft) - Chogori IP68 Connectors  
Fixing Method Mounting Brackets  
Adjustability 360°  
IP Rating IP67  
IK Rating IK\*\*  
Cooling system Convection  
Operating Ambient Temperature -20°C / +40°C (-4°F / +104°F)  
Operating Temperature +65°C @ Ambient +40°C (+149°F @ Ambient +104°F)

### CERTIFICATION

Listings ETL / cETL, CE, RoHS

## DIMENSIONS [in mm]:



### ACCESSORIES

Connector Chogori CGRBDU-08BFFA (Female) IP68 (Included)  
Connector Chogori CGRBDU-08BMMMA (Male) IP68  
Connector Waterproof Cap (Male)  
Cable Chogori (Female) - RJ45 3m  
Cable Chogori (Female) - RJ45 7m  
Cable Chogori (Female) - RJ45 15m  
Cable Chogori (Female) - RJ45 20m  
other lengths on request



Haven restaurant - Miami, USA



# ArcLine Indoor, ArcLink, ArcCove

The Anolis ArcLine combines state of the art lighting technology with a balanced design profile to create truly specifier class lighting systems. Using only the finest materials and precision manufacturing techniques the Anolis ArcLine provides the professional solution for your lighting needs. ArcLine is available either with or without precision primary optics allowing for a diverse range of effects to be achieved. When greater flexibility is required Anolis ArcLink utilizes the same leading edge LED technology as ArcLine and ArcLine Optic but in a smaller footprint package allowing for use in a variety of installations. Available in a range of colour configurations in both optic and non-optic formats ArcLink provides a truly flexible solution.

Anolis ArcCove cleverly combines both high light output intensity with cost/energy efficient LED technology to achieve a lighting product that offers a genuine alternative to traditional linear incandescent or fluorescent cove lighting systems.

ArcCove has a streamlined profile and various mounting options meaning greater flexibility for a wider variety of applications. The latest LED chip technology combined with a plug and play set up process insures that incredible effects are simple to create.

ArcLine 20MC™, 40MC™ ► Pg. 36



ArcLine Optic 20MC™, 40MC™ ► Pg. 37



ArcLine 6™, 12™, 18™, 24™, 36™ ► Pg. 38



ArcLine Optic 6™, 12™, 18™, 24™, 36™ ► Pg. 39



ArcLine 6 SW™, 12 SW™, 18 SW™, 24 SW™, 36 SW™ ► Pg. 40  
ArcLine Optic 6 SW™, 12 SW™, 18 SW™, 24 SW™, 36 SW™



ArcLink 3™, 4™, ArcLink Optic 3™, 4™ ► Pg. 41



ArcCove Standard™, Rail Mount™, Low Profile™ ► Pg. 42

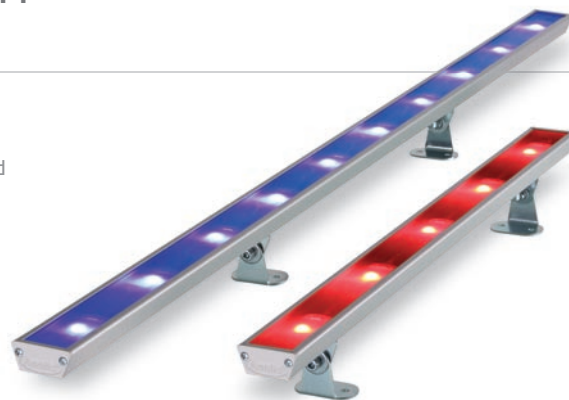


ArcCove DataBox™, ArcCove Power MW™ ► Pg. 43



# ArcLine 20MC™, 40MC™

Spectacular combinations of smooth colour mixing is ensured by a new generation of Cree multichip LED technology that allows the best homogeneous colour distribution and precise single point of colour emission for enhanced viewing perception. Combined with high light output and long lumen maintenance together with customizable colour variant, pixel pitch and length of the line, the Anolis ArcLine redefines the standard for any modern lighting specifications.



## TECHNICAL SPECIFICATIONS:

### ELECTRICAL

Input Voltage 48V DC  
Typical Power Consumption 22W (20MC), 44W (40MC)

### OPTICAL

Light Source 5 x (20MC) , 10 x (40MC) High Power LEDs  
Colour Variants RGBW (W=CW-6500K, NW-4200K), PW (3200K, 6500K), SW (2700-6500K)  
Red/Green/Blue/White, Pure White, Smart White  
Lumen Output (Delivered) 20MC: 1025lm (RGBCW, non optic), 40MC: 2047lm (RGBCW, non optic)  
Beam Angle Non Optic  
Projected Lumen Maintenance 60,000 hrs ( L70@ 25°C / 77°F)

### CONTROL

Wireless DMX (Optional Accessory) N/A  
Control System Anolis Lighting Controls or any Third Party DMX512 Controllers  
Power Supply ArcPower Range  
Stand Alone Control N/A

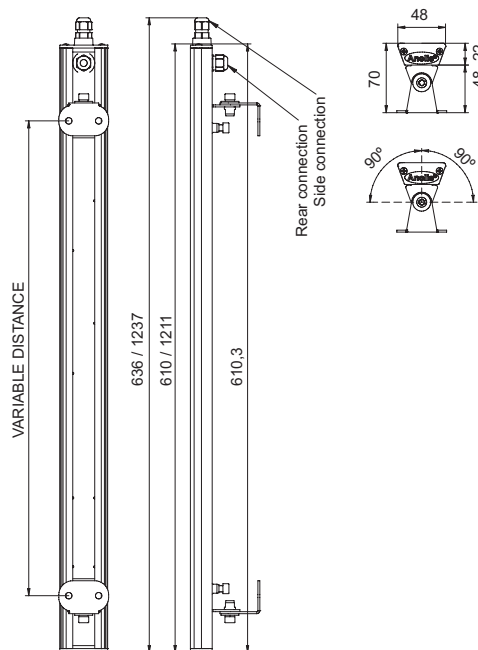
### PHYSICAL

Width x Height x Depth Inches: 25.04, 48.70 x 2.76 x 1.89  
mm: 636, 1237 x 70 x 48  
Weight lbs: 1.99, 3.75  
kg: 0.9, 1.7  
Housing Extruded Aluminium  
Frosted Glass cover  
Finish Options Silver (STD), Black/White/custom RAL (cost option)  
Fixture Cable and Connections 24 AWG x 4P Cat 5 - 1.5m (4.92ft) - RJ45  
Fixing Method Mounting Brackets  
Adjustability +/-90°  
IP Rating IP2X  
IK Rating IK\*\*  
Cooling system Convection  
Operating Ambient Temperature -20°C / +40°C (-4°F / +104°F)  
Operating Temperature +50°C @ Ambient +25°C (+122°F @ Ambient +77°F)

### CERTIFICATION

Listings ETL / cETL , CE, RoHS

## DIMENSIONS (in mm):



### ACCESSORIES

Allen Key (Included)  
Splitter 1pcs (See Splitter Technical Guide) (Included)  
Splitter (n/a for ArcLine 40)

# ArcLine Optic 20MC™, 40MC™

This precision high quality optical system combined with a variety of lens options, ranging from the narrowest to the widest angles makes ArcLine Optic MC suitable for a broad range of architectural applications. A combination of superior colour mixing and smooth light dispersion results in superior uniform colour output. The spectacular performance of the colour mixing system is ensured utilizing the new generation of Cree multichip LEDs. This allows the best homogeneous colour distribution and most precise single-point-of-colour emission. High light output and longevity of the LEDs together with customizable colour variants sees the Anolis ArcLine redefining standards for any modern lighting specification.



## TECHNICAL SPECIFICATIONS:

### ELECTRICAL

Input Voltage 48V DC  
Typical Power Consumption 22W (20MC), 44W (40MC)

### OPTICAL

Light Source 5 x (20MC), 10 x (40MC) High Power LEDs  
Colour Variants RGBW (W=CW-6500K, NW-4200K), PW (3200K, 6500K), SW (2700-6500K)  
Red/Green/Blue/White, Pure White, Smart White  
Lumen Output (Delivered) 20MC: 1114lm (RGBCW at 27°), 40MC: 2222lm (RGBCW at 27°)  
Beam Angle 27°, 36°, 21°x36°  
Projected Lumen Maintenance 60,000 hrs (L70 @ 25°C / 77°F)

### CONTROL

Wireless DMX (Optional Accessory) N/A  
Control System Anolis Lighting Controls or any Third Party DMX512 Controllers  
Power Supply ArcPower Range  
Stand Alone Control N/A

### PHYSICAL

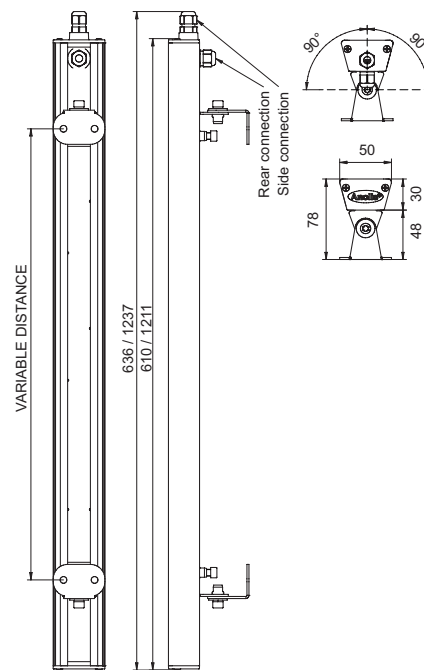
Width x Height x Depth Inches: 25.04, 48.70 x 3.07 x 1.97  
mm: 636, 1237 x 78 x 50  
Weight lbs: 2.43, 4.19  
kg: 1.1, 1.9  
Housing Extruded Aluminium  
Glass cover  
Finish Options Silver (STD), Black/White/custom RAL (cost option)  
Fixture Cable and Connections 24 AWG x 4P Cat 5 - 1.5m (4.92ft) - RJ45  
Fixing Method Mounting Brackets  
Adjustability +/-90°  
IP Rating IP2X  
IK Rating IK\*\*  
Cooling system Convection  
Operating Ambient Temperature -20°C / +40°C (-4°F / +104°F)  
Operating Temperature +50°C @ Ambient +25°C (+122°F @ Ambient +77°F)

### CERTIFICATION

Listings CE, RoHS, ETL/cETL



## DIMENSIONS (in mm):



### ACCESSORIES

Allen Key (Included)  
Splitter 1pcs (See Splitter Technical Guide) (Included)  
Splitter (n/a for ArcLine Optic 40)

# ArcLine 6™, 12™, 18™, 24™, 36™

The Anolis ArcLine combines state of the art lighting technology with a balanced design profile to create truly specifier-class lighting systems. Using only the finest materials and precision manufacturing techniques the Anolis ArcLine provide the professional solution for your lighting requirements. The highest quality wide angle LEDs ensure that a constant effect is delivered in the widest range of application possibilities. Utilizing high-powered LEDs the Anolis ArcLine is unsurpassed in performance, reliability and quality.



## TECHNICAL SPECIFICATIONS:

### ELECTRICAL

Input Voltage 48V DC  
Typical Power Consumption 6.8W, 13.6W, 20.4W, 27.2W, 40.8W

### OPTICAL

Light Source 6, 12, 18, 24, 36, x High Power LEDs  
Colour Variants RGBW (W=WW-3200K, CW-6500K), RGB, R, G, B, A  
Red / Green / Blue / Red, Amber, Green, Blue, White  
Lumen Output (Delivered) 36: 1595lm (RGB, non-optic), 3370lm (PW 3200K, non-optic)  
Beam Angle Non Optic  
Projected Lumen Maintenance 50,000 hrs ( L70@ 25°C / 77°F)

### CONTROL

Wireless DMX (Optional Accessory) N/A  
Control System Anolis Lighting Controls or any Third Party DMX512 Controllers  
Power Supply ArcPower Range  
Stand Alone Control N/A

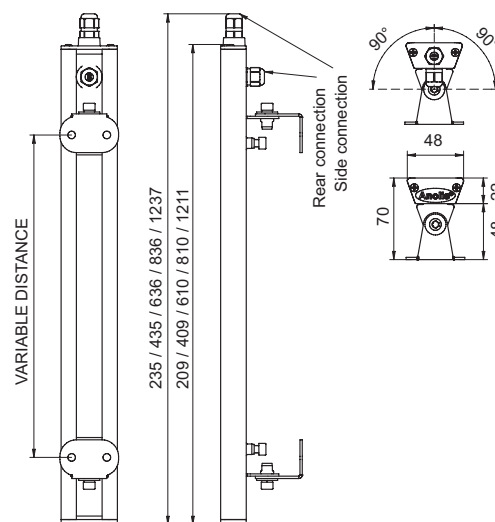
### PHYSICAL

Width x Height x Depth Inches: 9.25, 17.13, 25.04, 32.91, 48.70 x 2.76 x 1.89  
mm: 235, 435, 636, 836, 1237 x 70 x 48  
Weight lbs: 0.66, 1.32, 1.76, 2.21, 3.31  
kg: 0.3, 0.6, 0.8, 1, 1.5  
Housing Extruded Aluminium  
Glass cover  
Finish Options Silver (STD), Black/White/custom RAL (cost option)  
Fixture Cable and Connections 24 AWG x 4P Cat 5 - 1.5m (4.92ft) - RJ45  
Fixing Method Mounting Brackets  
Adjustability +/-90°  
IP Rating IP2X  
IK Rating IK\*\*  
Cooling system Convection  
Operating Ambient Temperature -20°C / +40°C (-4°F / +104°F)  
Operating Temperature +50°C @ Ambient +25°C (+122°F @ Ambient +77°F)

### CERTIFICATION

Listings ETL / cETL, CE, RoHS

## DIMENSIONS (in mm):



### ACCESSORIES

Allen Key (Included)  
Splitter 1pcs (See Splitter Technical Guide) (Included)  
Splitter (n/a for ArcLine 36)

# ArcLine Optic 6™, 12™, 18™, 24™, 36™

The Anolis ArcLine Optic range combines state of the art lighting technology with a balanced design profile to create truly specifier-class lighting systems. Using only the finest materials and precision manufacturing techniques the Anolis ArcLine provides the professional solution for your lighting requirements.

The highest quality optics ensure that a constant effect is delivered in the widest range of application possibilities. Utilizing high-powered LEDs the Anolis ArcLine Optic range is unsurpassed in performance, reliability and quality.



## TECHNICAL SPECIFICATIONS:

### ELECTRICAL

Input Voltage	48V DC
Typical Power Consumption	6.8W, 13.6W, 20.4W, 27.2W, 40.8W

### OPTICAL

Light Source	6, 12, 18, 24, 36, x High Power LEDs
Colour Variants	RGBW (W-WW-3200K, CW-6500K), RGB, R, G, B, A Red / Green / Blue / Red, Amber, Green, Blue, White
Lumen Output (Delivered)	36: 1624lm (RGB at 10°)
Beam Angle	10°, 20°, 30°, 47°x11°
Projected Lumen Maintenance	50,000 hrs ( L70@ 25°C / 77°F)

### CONTROL

Wireless DMX (Optional Accessory)	N/A
Control System	Anolis Lighting Controls or any Third Party DMX512 Controllers
Power Supply	ArcPower Range
Stand Alone Control	N/A

### PHYSICAL

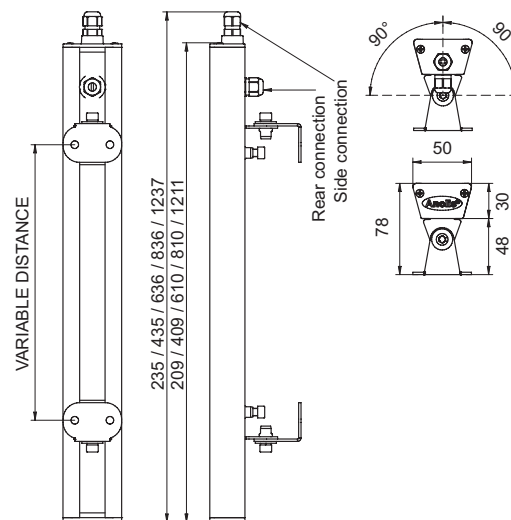
Width x Height x Depth	Inches: 9.25, 17.13, 25.04, 32.91, 48.70 x 3.07 x 1.97 mm: 235, 435, 636, 836, 1237 x 78 x 50 lbs: 1.06, 1.66, 2.32, 2.9, 4.2 kg: 0.48, 0.75, 1.05, 1.3, 1.9
Weight	Extruded Aluminium
Housing	Glass cover
Finish Options	Silver (STD), Black/White/custom RAL (cost option)
Fixture Cable and Connections	24 AWG x 4P Cat 5 - 1.5m (4.92ft) - RJ45
Fixing Method	Mounting Brackets
Adjustability	+/-90°
IP Rating	IP2X
IK Rating	IK**
Cooling System	Convection
Operating Ambient Temperature	-20°C / +40°C (-4°F / +104°F)
Operating Temperature	+50°C @ Ambient +25°C (+122°F @ Ambient +77°F)

### CERTIFICATION

Listings	ETL / cETL, CE, RoHS
----------	----------------------



## DIMENSIONS (in mm):



### ACCESSORIES

Allen Key (Included)
Splitter 1pcs (See Splitter Technical Guide) (Included)
Splitter (n/a for ArcLine Optic 36)



# ArcLine 6 SW™, 12 SW™, 18 SW™, 24 SW™, 36 SW™

## ArcLine Optic 6 SW™, 12 SW™, 18 SW™, 24 SW™, 36 SW™

When colour rendering is of utmost importance the ArcLine Optic Smart White provides the solution. By combining warm white and cold white high powered LEDs with Anolis digital control, a full range of white light from 3200K to 6500K can be achieved.

All this technology is combined with the balanced design profile of the Anolis ArcLine Optic along with the highest quality optics to create a truly versatile linear lighting system whenever the environment demands.



### TECHNICAL SPECIFICATIONS:

#### ELECTRICAL

Input Voltage	48V DC
Typical Power Consumption	6.8W, 13.6W, 20.4W, 27.2W, 40.8W

#### OPTICAL

Light Source	6, 12, 18, 24, 36, x High Power LEDs
Colour Variants	PW (WW-3200K, NW-4300K, CW-6500K), SW (3200-6500K) Pure White, Smart White
Lumen Output (Delivered)	Optic 36: 3408lm (WW at 15°)
Beam Angle	non optic, 15°, 25°, 31°, 37°, 47°x11°
Projected Lumen Maintenance	50,000 hrs ( L70@ 25°C / 77°F)

#### CONTROL

Wireless DMX (Optional Accessory)	N/A
Control System	Anolis Lighting Controls or any Third Party DMX512 Controllers
Power Supply	ArcPower Range
Stand Alone Control	N/A

#### PHYSICAL

Width x Height x Depth	Inches: 9.25, 17.13, 25.04, 32.91, 48.70 x 2.76, 3.07 x 1.89, 1.97 mm: 235, 435, 636, 836, 1237 x 70, 78 x 48, 50
Weight	lbs: 1.06, 1.66, 2.32, 2.9, 4.2 kg: 0.48, 0.75, 1.05, 1.3, 1.9
Housing	Extruded Aluminium Glass cover
Finish Options	Silver (STD), Black/White/custom RAL (cost option)
Fixture Cable and Connections	24 AWG x 4P Cat 5 - 1.5m (4.92ft) - RJ45
Fixing Method	Mounting Brackets
Adjustability	+/-90°
IP Rating	IP2X
IK Rating	IK**
Cooling System	Convection
Operating Ambient Temperature	-20°C / +40°C (-4°F / +104°F)
Operating Temperature	+50°C @ Ambient +25°C (+122°F @ Ambient +77°F)

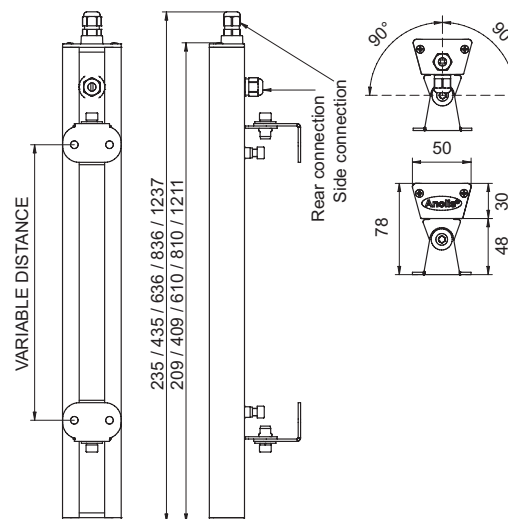
#### CERTIFICATION

Listings	ETL / cETL, CE, RoHS
----------	----------------------



### DIMENSIONS (in mm):

#### ArcLine Optic SW



#### ACCESSORIES

Allen Key (Included)  
Splitter 1pcs (See Splitter Technical Guide) (Included)  
Splitter (n/a for ArcLine 36/ArcLine Optic 36)

# ArcLink 3™, 4™

## ArcLink Optic 3™, 4™

The perfect companion to the ArcLine range, ArcLink adds a flexible dimension to linear LED lighting combining the latest high-powered LEDs with simple CAT 5 connection and complete with heat sink for thermal management. The compact ArcLink can be installed virtually anywhere, including curved alcove lighting and even concealed within furniture or fittings.



### TECHNICAL SPECIFICATIONS:

#### ELECTRICAL

Input Voltage 48V DC  
Typical Power Consumption 3.4W, 4.5W

#### OPTICAL

Light Source 3 x, 4 x High Power LEDs  
Colour Variants RGBW (W=WW-3200K, CW-6500K), R, G, B, A, PW (3200K, 4300K, 6500K), SW (3200-6500K)  
Red/Green/Blue/White, Red, Green, Blue, Amber, Pure White, Smart White  
Lumen Output (Delivered) Optic 4: 188lm (RGBWW at 10°)  
Beam Angle 10°, 22°, 30°, 34°, 46°x11°, Non Optic: 142°x134°  
Projected Lumen Maintenance 50,000 hrs ( L70 @ 25°C / 77°F )

#### CONTROL

Wireless DMX (Optional Accessory) N/A  
Control System Anolis Lighting Controls or any Third Party DMX512 Controllers  
Power Supply ArcPower Range  
Stand Alone Control N/A

#### PHYSICAL

Width x Height x Depth  
Inches: ArcLink 3- 5.55 x 0.79 x 1.14 / ArcLink 4- 5.55 x 0.79 x 1.14  
Inches: ArcLink Optic 3- 5.55 x 0.95 x 1.14 / ArcLink Optic 4- 6.50 x 0.95 x 1.34  
mm: ArcLink 3- 141 x 20 x 29 / ArcLink 4- 141 x 20 x 29  
mm: ArcLink Optic 3- 141 x 24 x 29 / ArcLink Optic 4- 165 x 24 x 34  
Weight  
lbs: 0.11, 0.13  
kg: 0.05, 0.06  
Housing Aluminium  
Fixture Cable and Connections ArcLink Patch Cable RJ45  
Fixing Method Mounting Holes  
Adjustability N/A  
IP Rating IP2X  
IK Rating N/A  
Cooling System Convection  
Operating Ambient Temperature -20°C / +40°C (-4°F / +104°F)  
Operating Temperature +50°C @ Ambient +25°C (+122°F @ Ambient +77°F)

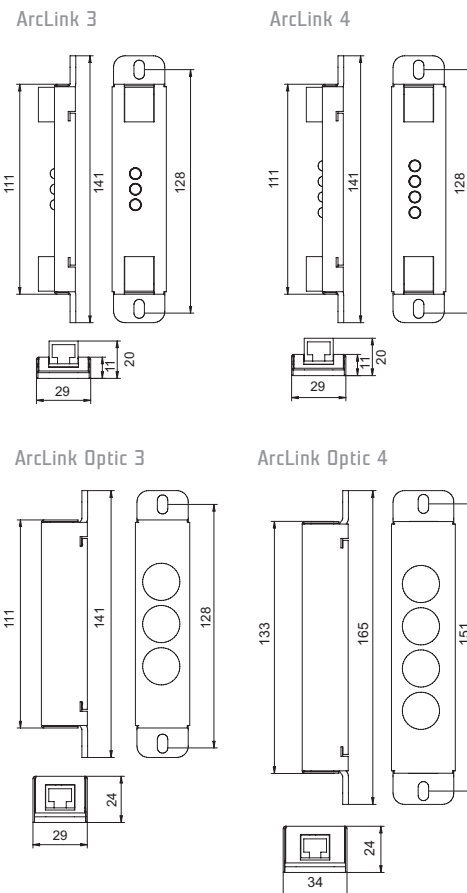
#### CERTIFICATION

Listings ETL / cETL, CE, RoHS

#### ACCESSORIES

ArcLink Patch Cable 10cm, x 5 (Included)  
RJ45 Termination Plug x 1 (Included)

### DIMENSIONS [in mm]:



# ArcCove Standard™, Rail Mount™, Low Profile™

Anolis ArcCove cleverly combines both high light output intensity with energy efficient LED technology to achieve a lighting product that offers a genuine alternative to traditional linear incandescent or fluorescent cove lighting systems.

ArcCove has a streamlined profile and various mounting options meaning greater flexibility for a wider variety of applications. The latest LED chip technology combined with a plug and play set up process insures that incredible effects are simple to create.



## TECHNICAL SPECIFICATIONS:

### ELECTRICAL

Input Voltage 24V DC  
Typical Power Consumption 5W (Standard Power Mode), 10.8W (High Power Mode)

### OPTICAL

Light Source 10 x 1W MC LEDs  
Colour Variants RGB, PW (2700K, 6500K), SW (2700-6500K)  
Red / Green / Blue, Pure White, Smart White  
Lumen Output (Delivered) 171lm (RGB, non optic, High Power Mode),  
95lm (RGB, non optic, Standard Power Mode)

Beam Angle Non Optic  
Projected Lumen Maintenance 50,000 hrs ( L50@ 50°C / 122°F)

### CONTROL

Control System ArcCove DataBox  
Power Supply ArcCove Power  
Stand Alone Control N/A

### PHYSICAL

Width x Height x Depth Inches: 11.81 x 1.38 x 2.14, 1.77, 1.38  
mm: 300 x 35 x 54.3, 45, 35  
Weight lbs: 0.33  
kg: 0.15  
Housing Moulded Plastic and Transparent Cover  
Fixture Cable and Connections 5 Wire Flat Ribbon Cable: UL2468 AWG 18/5C - In and Out Connectors  
Fixing Method Standard Adjustable Tilt / Rail Mount / Low Profile  
Adjustability +/-90° (Standard version only)  
IP Rating IP2X  
IK Rating IK\*\*  
Cooling System Convection  
Operating Ambient Temperature -20°C / +40°C (-4°F / +104°F)  
Operating Temperature +65°C @ Ambient +40°C (+149°F @ Ambient +104°F)

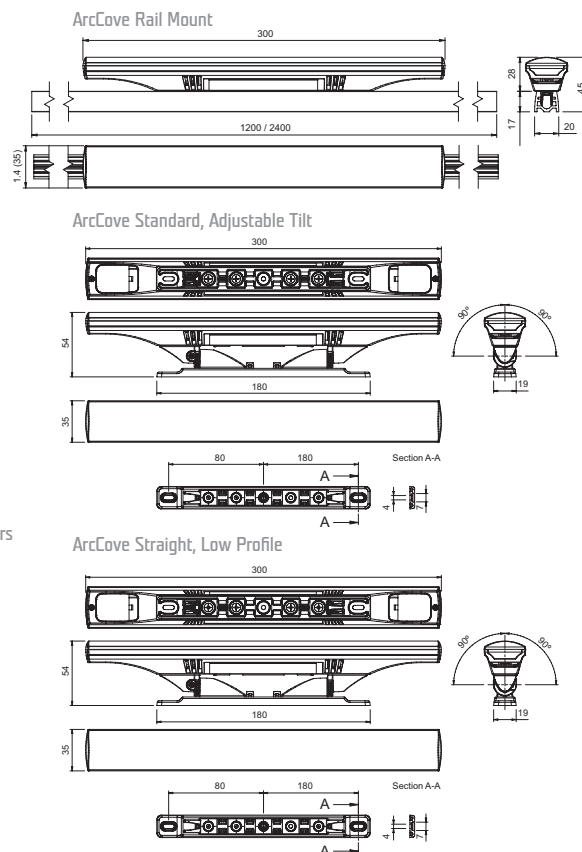
### CERTIFICATION

Listings ETL / cETL, CE, RoHS

### ACCESSORIES

Allen Key (Included)  
Cable Patch ArcCove 10cm (Included)

## DIMENSIONS (in mm):



# ArcCove DataBox™, ArcCove Power MW™

To provide power and control to the ArcCove, the ArcCove DataBox and ArcCove Power MW are combined. Together they have very low power consumption yet are capable of powering up to 17 ArcCove fixtures with control over 34 individual segments (2 zones per fitting), allowing creative dynamic white and colour change effects to be produced.



## TECHNICAL SPECIFICATIONS:

### ELECTRICAL

Input Voltage	100-277V AC 50/60 Hz
Typical Power Consumption	96W
OutPut Voltage	24V DC
Rated Current	4A
Power Factor	>95
Protection	Short Circuit, Overload, Over Voltage, Over Temperature

### PHYSICAL

Width x Height x Depth	Inches: 7.9 x 2.8 x 1.4 mm: 200 x 70.5 x 35
Weight	lbs: 1.15 kg: 0.52
Number of Led Output Zones	1
Maximum Load Per Zone	17x ArcCove (Standard Mode), 8x ArcCove (High Power Mode)
Max Cable Length	100m Depending on number of ArcCoves 20m From ArcCove Power to first ArcCove 20m between ArcCoves
Input connection	3-wire cable 18AWG 3C, Length 310mm
LED Output Connection	2-wire cable 18AWG 2C, Length 310mm
Fixing Method	2 Fixing Holes
IP Rating	IP20
Cooling System	Convection
Operating Ambient Temperature	-30°C / +50°C (-22°F / +122°F)

### CONTROL

Control	4-Digit LED display, 4 buttons
Connection	DMX and Power Connection Block

### PHYSICAL

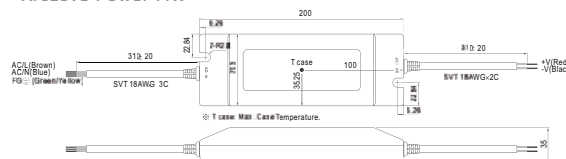
Width x Height x Depth	Inches: 5.59 x 2.17 x 1.36 mm: 142 x 55 x 34.5
Weight	lbs: 0.33 kg: 0.15
IP Rating	IP20

### CERTIFICATION

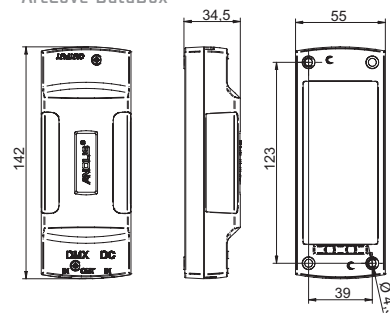
Listings	ETL / cETL, CE, RoHS
----------	----------------------

## DIMENSIONS (in mm):

ArcCove Power MW



ArcCove DataBox



### ACCESSORIES

- Cable connecting ArcCove 1m
- Cable connecting ArcCove 2m
- Cable connecting ArcCove 5m
- Cable connecting ArcCove 10m
- Cable Patch ArcCove 10cm
- Cable Patch ArcCove 15cm
- Cable Patch ArcCove 9.5cm, 90°
- Cable Patch ArcCove 12cm, 90°
- Cable Patch ArcCove 15cm, 90°
- Cable Patch ArcCove 30cm, 90°
- Mounting Rail ArcCove 1.2m
- Mounting Rail ArcCove 2.4m



Jupiters Hotel & Casino - Gold Coast, Australia (Photo credits: ULA)



# Media Solutions

The Anolis ArcDot is a RGBW high-powered multichip fixture. The unit's high light output can be pixel mapped and therefore be controlled and used for large-scale matrix applications, as well as used for individual illumination needs. It features an integrated intelligent, electronic control system that guarantees flicker free driving, overheat protection and together with remote addressing, calibration and status messaging with power supply unit it ensures easy remote maintenance and long term reliability. IP65 rated precision turned aluminum housing with frosted UV stable polycarbonate dome allows flexible solutions to both interior and exterior environments. ArcPix offers many of the features of the ArcDot but uses a highly efficient, lower power LED to produce a day light visible effect in an extremely compact package, again with a high IP rating the ArcPix can be used for both interior and exterior media façade style applications.

ArcDot™ ► Pg. 46



ArcPixel Power™ ► Pg. 47



ArcDot Flash™ ► Pg. 48



ArcPix™ ► Pg. 49



ArcSource Outdoor 4MC Pixel™ ► Pg. 50



ANOLIS Media Server™ ► Pg. 51



MiniMe™ ► Pg. 52



# ArcDot™

The Anolis ArcDot™ is a Cree MC-E RGBW multichip-based high-powered multicoloured LED fixture. The unit's high light output can be pixel mapped and therefore control large scale matrix applications, as well as individual illuminating needs. It features an integrated intelligent electronic control system that guarantees flicker-free driving, overheat protection. Together with remote addressing, calibration and status messaging with the power supply unit, it ensures easy remote maintenance and long-term reliability. IP65 rated precision turned aluminum housing with frosted UV stable polycarbonate dome allows flexible solutions to both interior and exterior environments.



## TECHNICAL SPECIFICATIONS:

### ELECTRICAL

Input Voltage 48V DC  
Typical Power Consumption 5.5W

### OPTICAL

Light Source 1x 10W MC LED  
RGBW (W=CW-6500K), PW (3200K, 6500K), SW (2700-6500K)  
RGBW, Pure White, Smart White  
Colour Variants  
Lumen Output (Delivered) 74lm (RGBCW, non optic, Opal Polycarbonate Dome)  
Beam Angle Non Optic  
Projected Lumen Maintenance 50,000 hrs ( L70@ 25°C / 77°F)

### CONTROL

Wireless DMX (Optional Accessory) N/A  
Control System Media Server  
Power Supply ArcPixel Power  
Stand Alone Control N/A

### PHYSICAL

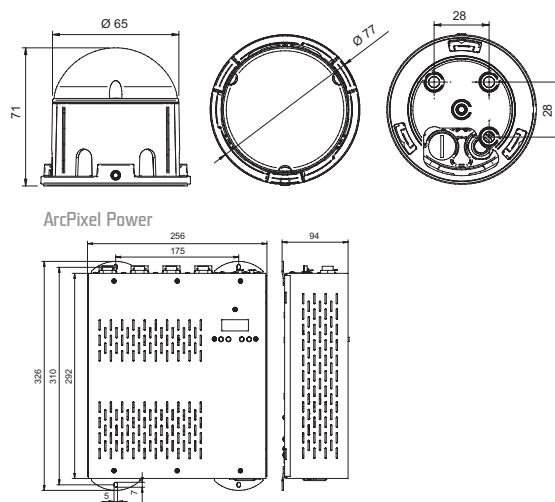
Width x Height Inches: Ø3.03 x 2.80  
mm: Ø77 x 71  
Weight lbs: 0.44  
kg: 0.2  
Housing Cast Aluminium  
Polycarbonate Dome  
Finish Options Silver (STD), Black/White/custom RAL (cost option)  
Fixture Cable and Connections Li9Y11Y 2xAWG16+1xAWG20 - Chogori IP68 Connector  
Fixing Method Mounting Back Plate  
Adjustability N/A  
IP Rating IP65  
IK Rating IK\*\*  
Cooling System Convection  
Operating Ambient Temperature -20°C / +50°C (-4°F / +122°F)  
Operating Temperature +45°C @ Ambient +40°C (+113°F @ Ambient +104°F)

### CERTIFICATION

Listings CE, RoHS, ETL / cETL pending



## DIMENSIONS [in mm]:



### ACCESSORIES

Cable Connection ArcDot 2.5m  
Cable Connection ArcDot 20m  
Cable Connection ArcDot 25m  
Cable Connection ArcDot 2m  
Cable Connection ArcDot 30cm  
Cable Connection ArcDot 4m  
Cable Connection ArcDot 88m  
other lengths on request  
Terminator Active for ArcDot  
Terminator Passive for ArcDot  
Connector C6RBB-03RMMA-SC8001 (connector Male)  
Connector C6RBB-03BFFA-SL8001 (connector Female)  
Connector T- C6RBA-030303FFM-TS (T-connector)

# ArcPixel Power™ CE version

ArcPixel Power™ the highly versatile power supply required for the range of pixel controlled products like ArcDot™, ArcPix™ and ArcSource Outdoor 4MC Pixel™. Multiple outputs allow a high quantity of products to be connected, auto addressing makes installation and set up easy to facilitate. Compatible with both DMX and ArtNet protocols and integration with a media servers allows complex media programming can be achieved, giving dynamic pixel control. The ArcPixel Power™ includes built-in web interface allowing quick overview of its settings and connected dots and also their settings via a connected PC. When pixel control is demanded by your project ArcPixel Power™ provides the most effective and simple solution.



## TECHNICAL SPECIFICATIONS:

### ELECTRICAL

Input Voltage 100-240V AC 50/60 Hz  
Typical Power Consumption 650W (+/- 10%)

### CONTROL

Interface Protocol USITT DMX512, ArtNet  
Display 4 Digit LED

### PHYSICAL

Width x Height x Depth inches: 12.8 x 10.1 x 3.7  
mm: 326 x 256 x 94

Weight lbs: 7.5  
kg: 3.4

Number of Led Output Zones 4  
Maximum Load Per Zone ArcDot (RGBW)/ArcDot Flash/ArcSource Outdoor 4MC Pixel: 35 (typically 25),  
ArcPix (RGB): 100

Total Load ArcDot (RGBW)/ArcDot Flash/ArcSource Outdoor 4MC Pixel: 100,  
ArcPix (RGB): 400

Max Cable Length ArcDot/ArcDot Flash/ArcSource Outdoor 4MC Pixel: 100m @ 25 units per output  
(or 65m @ 35 Dots), ArcPix: 100m @ 100 ArcPixes per output

LED Output Connection ArcDot/ArcDot Flash/ArcSource Outdoor 4MC Pixel: Chogori IP68, 3-pin (Female)  
ArcPix: Sauro CGF 050 M5

DMX Connection 3 Pin Male / Female XLR (In and Out)  
ArtNet Connection RJ45

Power Connection: Panel connector IEC C14 (socket)  
Fixing Method 4 Mounting Holes

IP Rating IP2X

IK Rating n/a

Cooling System Convection

Operating Temperature Range -10°C / +40°C (14°F / +104°F)

### CERTIFICATION

Listings CE, RoHS

### ACCESSORIES

Power cord IEC C13 (included)

Screw terminal board Sauro CGM 050 M5 (included)

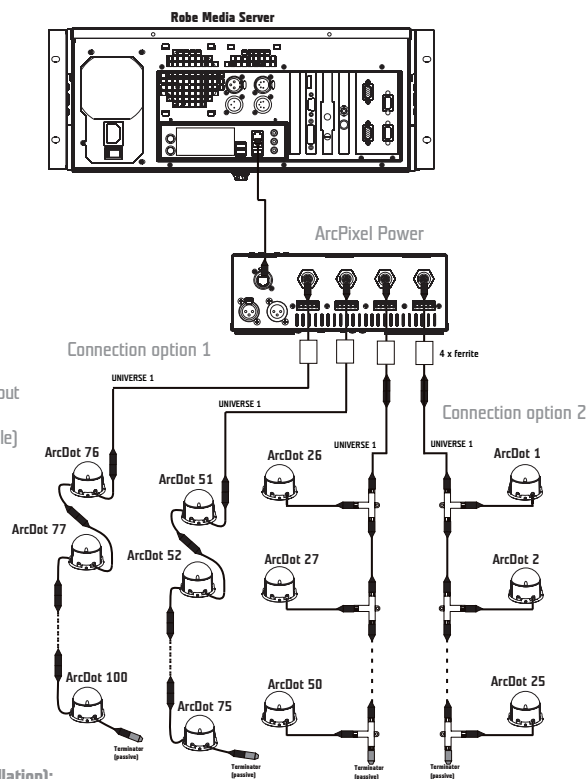
Items needed for installation (quantity depends on size and type of installation):

Ferrite GTFC 16-8-16 (for ArcDot)

Ferrite CSA19/9.4/29-4S60-EN (for ArcPix)



## ArcDot CONNECTION:



# ArcDot Flash™

Dramatic true strobe flash style effects can be created with the extremely bright ArcDot Flash™, with a flash output equivalent to a 10 Joule discharge flash this product has to be seen to be believed. Housed in the same compact footprint as the ArcDot™ RGBW, the ArcDot Flash™ utilises the latest LED chip technology meaning much greater efficiency, reliability and lamp life than traditional strobe flash solutions. If a more serene effect is required the ArcDot Flash™ also offer a continuous on operation as well as a full range dimming via DMX. Building highlighting and dramatic media effects can be realised when combine with Anolis ArcPixel Power™.



## TECHNICAL SPECIFICATIONS:

### ELECTRICAL

Input Voltage	48V DC
Current Consumption:	114 mA (average), 2A/100mSec. (max.)
Average Power Consumption	5.5 W
Temperature Protection:	Internal Chip Protection Against Overheating

### OPTICAL

Light Source	8 x White LED multichip (Philips Luxeon M, 5700K)
Flash Energy	Equivalent Of 10 Joule Discharge Flash
Beam Angle	Non-Optic
Projected Lumen Maintenance	70% @ 50,000 hours

### CONTROL

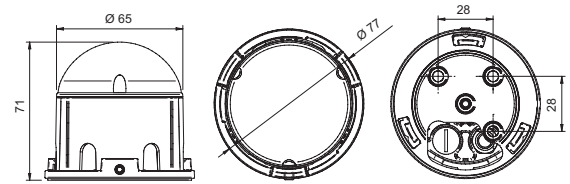
Wireless DMX (Optional Accessory)	N/A
Control System	ArcPixel Power
Power Supply	ArcPixel Power
Stand Alone Control	N/A
Flash	Random Flash (Factory Setting)
Number Of Flashes Per Minute	22-28
Flash Length	100W, 25ms
Synchronous Flash (all 100 units)	25W, 25ms
Continuous Lit (no flashing)	5W, Continuous
Individual Addressing Of Each ArcDot Flash	Yes (Optional)

### PHYSICAL

Width x Height x Depth	inches: Ø3.03 x 2.80 mm: Ø77 x 71
Weight	lbs: 0.44 kg: 0.2
Housing	Cast Aluminium, Polycarbonate Dome
Finish Options	Silver, Black/White/Custom RAL (cost option)
Fixture Cable and Connections	Li9Y11Y 2xAWG16+1xAWG20 - Chogori IP68 Connectors
Fixing Method	Mounting Back Plate
IP Rating	IP65
IK Rating	IK**
Cooling System	Convection
Operating Ambient Temperature	-20°C/+50°C
Operating Temperature	+40°C @ Ambient +25°C [+104°F @ Ambient +77°F]



## DIMENSIONS [in mm]:



### CERTIFICATION

Listings

ETL / cETL, CE, RoHS pending

### ACCESSORIES

CCable Connection ArcDot 2.5m  
 Cable Connection ArcDot 20m  
 Cable Connection ArcDot 25m  
 Cable Connection ArcDot 2m  
 Cable Connection ArcDot 30cm  
 Cable Connection ArcDot 4m  
 Cable Connection ArcDot 88m  
 other lengths on request  
 Terminator Active for ArcDot  
 Terminator Passive for ArcDot  
 Connector CGRBB-03RMMA-SC8001 (connector Male)  
 Connector CGRBB-03BFFA-SL8001 (connector Female)  
 Connector T- CGRBA-030303FFM-TS (T-connector)

# ArcPix™

Utilizing a high efficient Mid power LED chip ArcPix™ is a compact RGB LED node suitable for both interior and exterior applications, plug and play electronics allow for complex pixel mapping and media effects to be achieved on structural surfaces and building facades. Up to 400 units can be combined with a single ArcDot Power unit providing the flexibility to create dramatic visual effects.



## TECHNICAL SPECIFICATIONS:

### ELECTRICAL

Input Voltage 48V DC  
Typical Power Consumption 0.8W

### OPTICAL

Light Source 1 x MC Mid Power LED  
Colour Variants Red, Green, Blue  
Lumen Output (Delivered) 24lm (RGB, non optic)  
Beam Angle Non Optic  
Projected Lumen Maintenance 50,000 hrs ( L50@ 50°C / 122°F)

### CONTROL

Wireless DMX (Optional Accessory) N/A  
Control System Media Server  
Power Supply ArcPixel Power  
Stand Alone Control N/A

### PHYSICAL

Width x Height Inches: Ø2.21 x 0.95 (0.83 w/out mounting plate)  
mm: Ø56 x 24 (21 w/out mounting plate)  
Weight lbs: 0.44  
kg: 0.2  
Housing Moulded Plastic  
Polycarbonate Cover  
Fixture Cable and Connections 5 Wire Flat Cable AWM 295720AWG - Factory Fitted Connector  
Mounting Method Mounting Plate or Direct fixing  
Adjustability N/A  
IP Rating IP67  
Impact Rating N/A  
Cooling System Convection  
Operating Ambient Temperature -20°C / +50°C (-4°F / +122°F)  
Operating Temperature +50°C @ Ambient +40°C (+122°F @ Ambient +104°F)

### CERTIFICATION

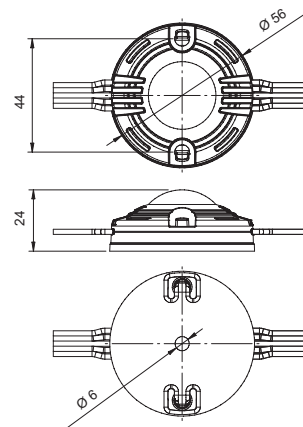
Listings ETL / cETL, CE, RoHS pending

### ACCESSORIES

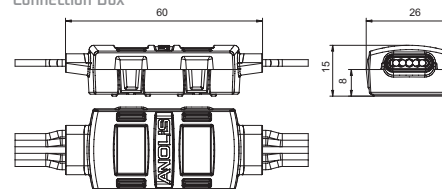
Connection Cable (In meters)  
Connection Box  
Termination Box (1 Per Run)



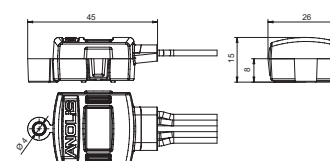
## DIMENSIONS (in mm):



Connection Box



Termination Box





# ArcSource Outdoor 4MC Pixel™

The ArcSource Outdoor 4MC Pixel™ features all the benefits of the highly popular ArcSource Outdoor 4MC™, high light output, the latest multichip technology, precision optics, high IP Rating and versatile mounting. The stirrup now combined with Anolis' excellent pixel control electronics makes this product even more versatile.

Individual colour/dimming control of each ArcSource Outdoor 4MC Pixel™ is now possible when connected to the ArcPixel Power™. Dynamic media style effects can be created and added to your landscape or facade installations.



## TECHNICAL SPECIFICATIONS:

### ELECTRICAL

Input Voltage 48V  
Typical Power Consumption 5.5W/48V

### OPTICAL

Light Source 1 x RGBW Multichip LED  
RGBCW (CW-6300K), PW (6300K), SW (2700-7100K)  
Colour Variant Red/Green/Blue/White, Pure White, Smart White  
Beam Angle 7°, 24°, 34°, 42°x7°, 7°x42°  
Lumen Output (Delivered) 50,000 hrs (L70@ 25°C / 77°F)  
Projected Lumen Maintenance

### CONTROL

Wireless DMX (Optional Accessory) N/A  
Control System ArcPixel Power  
Power Supply ArcPixel Power  
Stand Alone Control N/A

### PHYSICAL

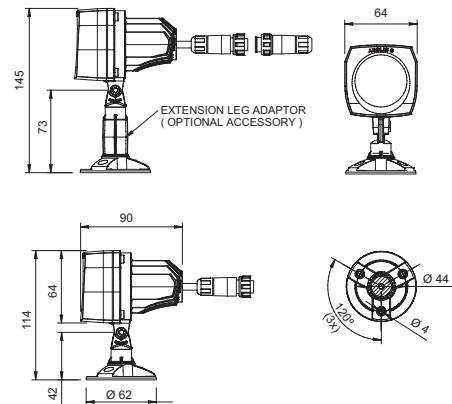
Dimensions (W x H x D) Inches: 2.52 x 4.49 (5.71) x 3.54  
mm: 64 x 114 (145) x 90  
lbs: 1.37  
kg: 0.62  
Housing High Pressure Die-Cast Aluminum Body  
Tempered Glass  
Finish Options Silver, Black/White/Custom RAL (cost option)  
Fixture Cable and Connections Li9Y11Y, 2xAWG16+1xAWG 20  
Fixing Method Mounting Plate (3 Fixing Holes), Spike Option  
Adjustability +/-60° (+80° /-90° with Adaptor Plate)  
IP Rating IP 65  
Impact Rating IK\*\*  
Cooling System Convection  
Operating Ambient Temperature -20°C / +45°C (-4°F / +113°F)  
Operating Temperature +75°C @ Ambient +50°C (+167°F @ Ambient +122°F)

### CERTIFICATION

Listings ETL / cETL, CE, RoHS pending



## DIMENSIONS inch (mm):



### ACCESSORIES

Adaptor Stand (included)  
Allen Key (Included)  
Screw M5x45 (Included)  
Lamp Spike Single (100mm)  
Lamp Spike Twin (100mm)  
Lamp Spike Single (500mm)  
Lamp Spike Twin (500mm)  
Lamp Spike Triple (500mm)  
Connector Chogori CGRBDU-03BFFA (Female) IP68  
Connector Chogori T Piece 3-pin  
Connector Waterproof Cap (Male)  
Cable Chogori (Female) - Chogori (Male) 3m  
other lengths on request  
Active Terminator (for ArcDot)  
Passive Terminator (for ArcDot)  
Ferrite GTFC 16-8-16 (for ArcDot) - CE only

# ANOLIS Media Server™

Modern media facades and Architectural media installations require advanced control solutions, in order to bring to life the dramatic effects required by today's ever more complex lighting design schemes. Anolis Media Server™ is a DMX controllable digital media server, with a built-in 32-bit Graphics Engine able to utilise Linux and DirectX application programming interfaces to provide extensive image control of Anolis pixel controlled products such as ArcPix™, ArcDot™ and ArcSource Outdoor 4MC Pixel™. The Anolis Media Server™ uses DMX512 protocol to control media capabilities including loading images and movies. The graphics engine allows you to manipulate position, scale, rotation, apply visual effects and colour mix each image, allowing designers to create impressive schemes for large building facade applications and control of multiple zone installations.



## TECHNICAL SPECIFICATIONS:

### ELECTRICAL

Input Voltage

100-120V/ 200-240V AC, 50/60 Hz

Typical Power Consumption

Auto-Switching Power Supply

Power Factor

100W (120VA) @ 230V

0.86

### CONTROL

Display

5" TFT LCD Display & Robe Navigation System

Protocol

USITT DMX 512, ArtNet

Other

Web Access For Total Control Of Fixture (User Library Management)

Media Content Synchronization In Web Interface

RDM Support

148 Control Channels

Support of CTP/MSEX Protocol

### HARDWARE

Motherboard

Supermico C7B75-0

Processor

Intel Core i3-3220 BOX (3.3GHz, LGA1155, VGA)

Memory

RAM Kingston 2GB DDR3-1600MHz

Graphics Card

GiGABYTE GT630 -1G (128activ 2xDHDS03)

Video Capture Card

AVerMedia DVD EZMaker Gold

Hard Disc

HDD 2.5" 500 GB Seagate Momentus 7200.4 G-Force

Gigabit Ethernet

### SOFTWARE

Operation System

Linux OS

### CONNECTIONS

Video Input

Standard: 1 x S-Video (Mini Din 4 pin), 1 x Composite Video (RCA)

Optional: 1 x DVI-D, 1 x VGA (Mini D-sub 15 pin) or 1 x SDI/ASI (BNC)

1x Parallel Video Output Splitted With 4 Full HD Layers Available

Via 4 VGA Outputs, (4 x VGA; 15-pin HD Connectors)

6 x USB 2.0 (Series A)

Locking 3-pin and 5-pin XLRs

RJ45

1.5 m Power Cord With Plug

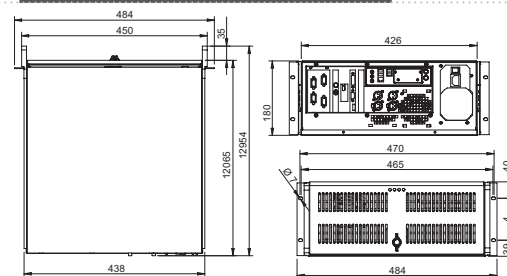
USB

DMX Data In/Out

ArtNet

AC Power Input

## DIMENSIONS inch (mm):



### PHYSICAL

Width x Height x Depth

inch: 17.24 [19.06] x 7.13 x 18.43 [19.76]

mm: 438 [484] x 181 x 468 [502]

Weight

lbs: 35.3

kg: 16

IP Rating

IP2X

Operating Temperature

0°C / +35°C [+32°F / +95°F]

Range

Maximum Housing

Temperature

40°C [+104°F]

Other

19" Rackmount Eurocase IPC 4U 500

Removable and Washable Air Filter

Lockable Front Doors

### CERTIFICATION

Listings

CE, RoHS

### ACCESSORIES

USB 2.0 Flash Drive With A System

Recovery Utility (included)

Capture Card DVI/DGA: Ncast DDC 3.1

Capture Card ASI/SDI In+Out: DTA-145-SBD

Cable VGA -BNC; Male-Female

Flight Case

# MiniMe™

new

The MiniMe™ is a unique product combining a moving head effects lighting luminaire with the addition of full video output. This compact, LED fixture is capable of producing a huge range of lighting effects combined with full video projection capabilities. The onboard micro-media server digitally generates colours, Gobos and beam shapes. Custom artwork, still photographs and video can also be simply uploaded for projection, while live video can be streamed through the HDMI input. The MiniMe™ is a truly versatile product for architectural illumination, retail POS visuals as well as corporate logo projection.



## TECHNICAL SPECIFICATIONS:

### ELECTRICAL

Input Voltage  
Typical Power Consumption

100-240V AC 50/60 Hz  
100W, +/-10%

### OPTICAL

Light Source  
Hardware  
LED Life Expectancy  
Light Output

RGB LED Device  
Raspberry Pi Model B 512MB RAM  
20,000 Hrs  
Comparable with 300 ANSI Lumen Fixtures

### CONTROL

Interface Protocol  
Content

USITT, DMX512, RDM, ArtNet, WIRELESS CRMX (OPTIONAL)  
Uploadable from USB  
Live Input from HDMI  
ArtNet Ready for CAN  
Linux OS  
Two Row LCD Display and 4 Buttons

Ethernet Port  
Operating System  
Display

### PHYSICAL

Width x Height x Depth

Inches: 9.8 x 13.6 x 7.52  
mm: 249 x 345 x 191

Weight

lbs: 12.6  
kg: 5.7  
24

Control Channels

Cable Connection

USB Connection

DMX Connection

ArtNet Connection

Mounting Method

IP Rating

Cooling System

Operating Ambient Temperature

Operating Temperature

Aspect Ratio: 16:10

Resolution: WXGA (1280x800)

Throw Ratio: 3.5:1

Contrast Ratio: 700:1

Display Colours: 16.7 Million

RGB or CMY Colour Mixing, Digital Zoom

234 Colours preprogramed including 8000k white

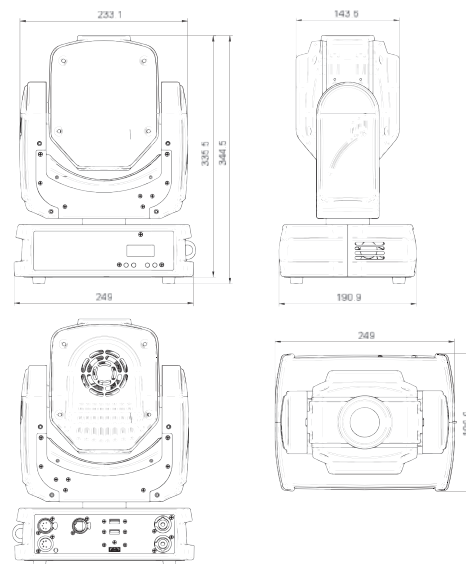
Built-in effects including transitions and fades

Horizontal and Vertical Key Stoning, smooth dimmer

Image Format: JPG, Video Format: MPEG4, H264



## DIMENSIONS inch (mm):



### CERTIFICATION

Listings

ETL / cETL, CE, RoHS

### ACCESSORIES

Wide Angle Lens 1:1.5 (White)

Mounting Bracket (White)

Mains PowerCon In/Open End 2m

Mains PowerCon In/Schuko 2m

Mains PowerCon In/CEE 16A 2m

Mains PowerCon In/US 2m

Daisy Chain PowerCon In/Out EU 2m

Daisy Chain PowerCon In/Out US 2m

Cable Chogori (Female) - RJ45 20m

other lengths on request

Zorlu Center - Istanbul, Turkey





Gardens by the Bay - Singapore





# ArcPower, ArcPower Outdoor

The Anolis range of LED lighting fixtures is brought to life with power and control via the ArcPower range. Manufactured from only the highest quality components the ArcPower range produces both the performance and reliability required for modern lighting solutions. Using industry standard protocols such as DMX 512 and RS232 along with globally recognized RJ45 connectors the ArcPower range is the lighting designer's perfect solution.

ArcPower 36™, 72™, 144™, 360™ ▶ Pg. 56



ArcPower 36/K2™, 72/K2™ ▶ Pg. 62



ArcPower 36 SW™, 72 SW™, 144 SW™, 360 SW™ ▶ Pg. 57



ArcPower 36/K2 SW™ ▶ Pg. 63  
ArcPower 72/K2 SW™



ArcPower 16x6™ ▶ Pg. 58



ArcPower 24 Outdoor™ ▶ Pg. 64



ArcPower 48™ ▶ Pg. 59



ArcPower 48 Outdoor™ ▶ Pg. 65



ArcPower 384 Rack-Mount™ ▶ Pg. 60



ArcPower 192 Outdoor™ ▶ Pg. 66



ArcSplitter 4™, 2x12™ ▶ Pg. 61



ArcPower 24MC (24V)™ ▶ Pg. 67



# ArcPower 36™, 72™, 144™, 360™

The Anolis range of LED lighting fixtures is brought to life with power and control via the ArcPower range. Manufactured from only the highest quality components the ArcPower range produces both the performance and reliability required for modern lighting solutions. Using industry standard protocols such as DMX 512 and RS232 along with globally recognized RJ45 connectors the ArcPower range is the lighting designer's perfect solution.



## TECHNICAL SPECIFICATIONS:

### ELECTRICAL

Input Voltage 100-240V AC 50/60 Hz  
Typical Power Consumption 60VA, 120VA, 240VA, 840VA, +/-10%  
Max Output Current 350mA Per Colour

### CONTROL

Interface Protocol USITT DMX512, DyNet, RS232  
Operation Modes DMX, Master/ Slave, Stand-Alone  
Display 3 Digit LED

### PHYSICAL

Width x Height x Depth  
Inches: 36 - 12.84 x 2.21 x 2.99, 72 - 12.84 x 2.21 x 5.35,  
144 - 12.84 x 2.21 x 10.08, 360 - 24.65 x 2.21 x 12.84  
mm: 36 - 326 x 56 x 76, 72 - 326 x 56 x 136,  
144 - 326 x 56 x 256, 360 - 626 x 56 x 326  
lbs: 36 - 2.43, 72 - 4, 144 - 6.4, 360 - 13.9  
kg: 36 - 1.1, 72 - 1.8, 144 - 2.9, 360 - 6.3  
36 - 1, 72 - 2, 144 - 4, 360 - 10  
RGB: 36 x 1W LEDs  
RGBW: 42 x 1W LEDs  
RGBW (MC): 10x MC LED's  
RGB: 36 x 1W LEDs, 72 x 1W LEDs, 144 x 1W LEDs, 360 x 1W LEDs  
RGBW: 42 x 1W LEDs, 84 x 1W LEDs, 168 x 1W LEDs, 420 x 1W LEDs  
RGBW (MC): 10 x MC LEDs, 20 x MC LEDs, 40 x MC LEDs, 100 x MC LEDs  
36 - 3, 4, 6, 7, 4, 72 - 6, 8, 11, 4, 4, 144 - 12, 16, 19, 3, 4,  
360 - 30, 40, 43, 4, 5  
DMX Channels 36 - 5, 72 - 5, 144 - 5, 360 - 5  
DMX Modes 36 - 10, 72 - 6, 144 - 6, 360 - 6  
Built in Programs 36 - 3 (Upto 50 Steps Each), 72 - 3 (Upto 50 Steps Each),  
144 - 3 (Upto 50 Steps Each), 360 - 3 (Upto 30 Steps Each)  
Editable Programs 80m Max Per Zone  
Max Cable Length RJ45  
LED Output Connection RJ45  
DMX Connection DE-9 (Male)  
RS232 Connection 36 - 2 Mounting Holes, 72 - 2 Mounting Holes, 144 - 4 Mounting Holes  
Fixing Method 360 - 6 Mounting Holes  
IP Rating IP2X  
IK Rating N/A  
Cooling System Convection  
Operating Temperature Range -10°C / +40°C (14°F / +104°F)

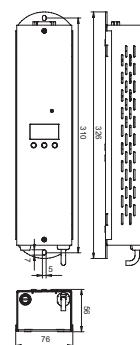
### CERTIFICATION

Listings CE, RoHS, ETL / cETL

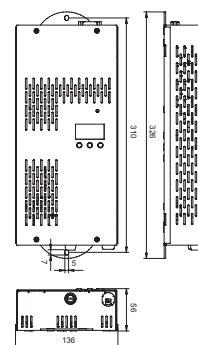


## DIMENSIONS (in mm):

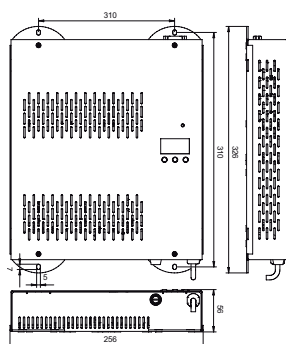
ArcPower 36



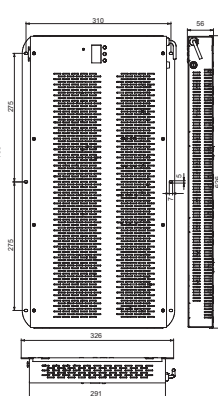
ArcPower 72



ArcPower 144



ArcPower 360



### ACCESSORIES

Cable Joiner (included)  
RJ45 / DMX 3 Pin Adaptor  
RJ45 / DMX 5 Pin Adaptor

# ArcPower 36 SW™, 72 SW™, 144 SW™, 360 SW™

The ArcPower 36, 72, 144 SmartWhite bring life to the Anolis SmartWhite range of LED lighting fixtures. Electronic dimming of the individual white channels allow smooth fading through a range of colour temperatures available, allowing for precise control of the colour rendering for the widest range of applications. Using industry standard protocols such as DMX 512 and RS232 along with globally recognized RJ45 connectors the ArcPower SmartWhite range is the lighting designer's perfect solution for variable white light applications.



## TECHNICAL SPECIFICATIONS:

### ELECTRICAL

Input Voltage 100-240V AC 50/60 Hz  
Typical Power Consumption 60VA, 120VA, 240VA, 840VA, +/-10%

Max Output Current 350mA Per Colour

### CONTROL

Interface Protocol USITT DMX512, DyNet, RS232  
Operation Modes DMX, Master/ Slave, Stand-Alone  
Display 3 Digit LED

### PHYSICAL

Width x Height x Depth  
Inches: 36 - 12.84 x 2.21 x 2.99, 72 - 12.84 x 2.21 x 5.35,  
144 - 12.84 x 2.21 x 10.08, 360 - 24.65 x 2.21 x 12.84  
mm: 36 - 326 x 56 x 76, 72 - 326 x 56 x 136,  
144 - 326 x 56 x 256, 360 - 626 x 56 x 326  
Weight  
lbs: 36 - 2.43, 72 - 4, 144 - 6.4, 360 - 13.9  
kg: 36 - 1.1, 72 - 1.8, 144 - 2.9, 360 - 6.3  
Number of Led Output Zones 36 - 1, 72 - 2, 144 - 4, 360 - 10  
Maximum Load Per Zone SW: 36 x 1W LED's  
Total Load SW (MC): 10 x MC LED's  
SW: 36 x 1W LED's, 72 x 1W LED's, 144 x 1W LED's, 360 x 1W LED's  
SW (MC): 36 - 10 x MC LED's, 72 - 20 x MC LED's, 144 - 40 x MC LED's,  
360 - 100 x MC LED's  
DMX Channels 36 - 2, 1, 2, 4, 72 - 4, 1, 3, 6, 3, 6, 144 - 8, 1, 5, 10, 3, 12,  
360 - 20, 1, 11, 22  
DMX Modes 36 - 5, 72 - 6, 144 - 6, 360 - 4  
Built in Programs 36 - 2, 72 - 2, 144 - 2, 360 - 3  
Editable Programs 36 - 1 (Upto 50 Steps Each), 72 - 1 (Upto 50 Steps Each),  
144 - 1 (Upto 50 Steps Each), 360 - 1 (Upto 30 Steps Each)  
Max Cable Length 80m Max Per Zone  
LED Output Connection RJ45  
DMX Connection RJ45  
RS232 Connection DE-9 [Male]  
Fixing Method 36 - 2 Mounting Holes, 72 - 2 Mounting Holes, 144 - 4 Mounting Holes  
360 - 6 Mounting Holes  
IP Rating IP2X  
IK Rating N/A  
Cooling System Convection  
Operating Temperature Range -10°C / +40°C [14°F / +104°F]

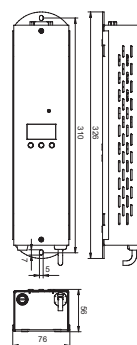
### CERTIFICATION

Listings CE, RoHS, ETL / cETL

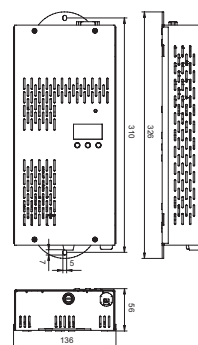


## DIMENSIONS (in mm):

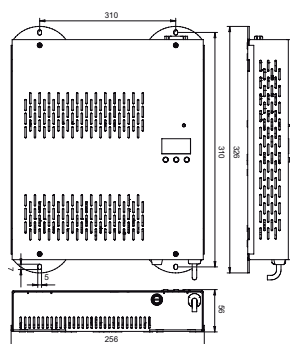
ArcPower 36 SW



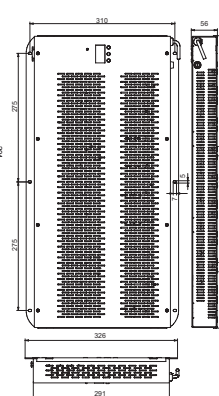
ArcPower 72 SW



ArcPower 144 SW



ArcPower 360 SW



### ACCESSORIES

Cable Joiner (included)  
RJ45 / DMX 3 Pin Adaptor  
RJ45 / DMX 5 Pin Adaptor

# ArcPower 16x6™

When individual fixture control is required the ArcPower 16x6™ comes into its own. With 16 separately DMX addressable outputs the ArcPower 16x6™ can be used to control complex patterns and matrixes. Each output is able to power up to 6 LEDs making this the perfect control option for ArcSource 1MC, 4MC and ArcLink products. With built-in programs and user editable programs the ArcPower 16x6™ can be linked to further units and operated in a master/slave configuration. The ArcPower 16x6™ can also be linked via DMX to the other ArcPower units in the range.



## TECHNICAL SPECIFICATIONS:

### ELECTRICAL

Input Voltage	100-240V AC 50/60 Hz
Typical Power Consumption	120W (+/- 10%)
Max Output Current	350mA Per Colour

### CONTROL

Interface Protocol	USITT DMX512
Operation Modes	DMX, Stand-Alone
Display	4 Digit LED

### PHYSICAL

Width x Height x Depth	Inches: 10.28 x 2.52 x 8.9 mm: 261 x 64 x 226
Weight	lbs: 4.41 kg: 2
Number of Led Output Zones	RGB Mode - 16, RGBW Mode - 12
Maximum Load Per Zone	RGB - 6 x 1W LEDs, RGBW - 8 x 1W LEDs RGBW (MC) - 2 x MC LEDs
Total Load	RGB - 16 x 6 x 1W LEDs, RGBW - 12 x 8 x 1W LEDs, RGBW (MC): 12 x 2 x MC LEDs
DMX Channels	3, 5, 48, 50, 4, 6, 48, 50
DMX Modes	8
Built In Programs	N/A
Editable Programs	2 (Upto 64 Steps Each)
Max Cable Length	20m Per Zone (Max. 80m Total Cable Length on Zones 1-8 and 9-16)
LED Output Connection	RJ45
DMX Connection	RJ45
RS232 Connection	N/A
Fixing Method	4 Mounting Holes
IP Rating	IP2X
IK Rating	N/A
Cooling System	Convection
Operating Temperature Range	-10°C / +40°C (14°F / +104°F)

### CERTIFICATION

Listings	CE, RoHS
----------	----------

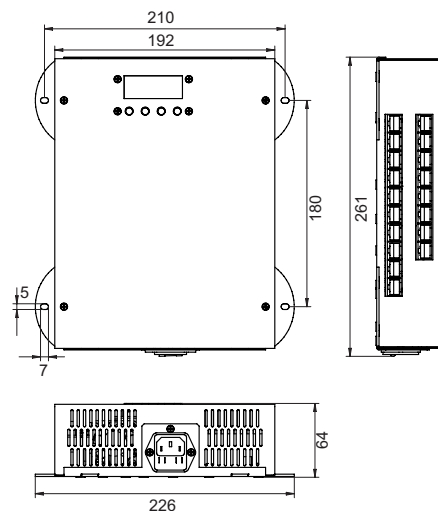
### ACCESSORIES

Cable Joiner (Included)
RJ45 / DMX 3 Pin Adaptor
RJ45 / DMX 5 Pin Adaptor



## DIMENSIONS (in mm):

ArcPower 16x6



# ArcPower 48™

The ArcPower™ has been designed and manufactured to the same high standards as the ArcPower 36™ to bring to life the phenomenal ArcPad 48™ range. Delivering the perfect balanced power to the ArcPad 48's rebel LEDs the ArcPower 48™ means that ArcPads are able to be seamlessly integrated into installations combining other Anolis products.

Multi connectivity including DMX, RS232, and Dynet via industry standard CAT5 connections means ArcPower 48™ is easily interfaced with the widest variety of standard lighting control systems.



## TECHNICAL SPECIFICATIONS:

### ELECTRICAL

Input Voltage	100-240V AC 50/60 Hz
Typical Power Consumption	60W +/-10%
Max Output Current	700mA (White Green Blue) 420mA (Red)

### CONTROL

Interface Protocol	USITT DMX512, DyNet, RS232
Operation Modes	DMX, Master/ Slave, Stand-Alone
Display	3 Digit LED

### PHYSICAL

Width x Height x Depth	Inches: 12.84 x 2.21 x 2.99 mm: 326 x 56 x 76
Weight	lbs: 2.43 kg: 1.1
Number of Led Output Zones	1
Maximum Load Per Zone	RGBW - 48x 3W LED's
Total Load	RGBW - 48x 3W LED's
DMX Channels	3, 4, 6, 7, 4
DMX Modes	5
Built in Programs	10
Editable Programs	3 (Upto 50 Steps Each)
Max Cable Length	40m Max Per Zone
LED Output Connection	RJ45
DMX Connection	RJ45
RS232 Connection	DE-9 (Male)
Fixing Method	2 Mounting Holes
IP Rating	IP2X
IK Rating	N/A
Cooling System	Convection
Operating Temperature Range	-10°C / +40°C (14°F / +104°F)

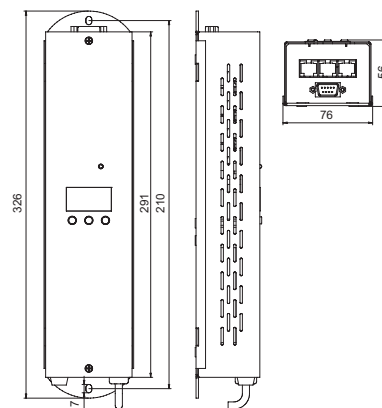
### CERTIFICATION

Listings	CE, RoHS
----------	----------

### ACCESSORIES

Cable Joiner (included)
RJ45 / DMX 3 Pin Adaptor
RJ45 / DMX 5 Pin Adaptor

## DIMENSIONS (in mm):





# ArcPower 384 Rack-Mount™

With many of today's LED installations becoming more and more technically demanding the ArcPower 384 Rack-Mount™ sets new standards in LED driver technology. Offering 8 individually controllable outputs, ArcPower 384 Rack-Mount™ is compatible with DMX, RDM (remote device management), Art Net and DyNet allowing the widest range of flexibility with advanced LED installations. High quality components and Anolis custom software ensures the highest level of reliability that has become a standard with the rest of the Anolis ArcPower range. A graphic display panel combined with the ANS (Anolis Navigation System) makes accessing the functions of the ArcPower 384 Rack-Mount™ a simple and intuitive experience. Demanding installation such as, shopping malls, entertainment complexes, stadiums, museums, theme parks and virtually all high specification LED installations can benefit from the huge flexibility of the Anolis ArcPower 384.



## TECHNICAL SPECIFICATIONS:

### ELECTRICAL

Input Voltage	100-240V AC 50/60 Hz
Typical Power Consumption	520W [1200W] +/-10%
Max Output Current	350mA or 700mA Per Colour

### CONTROL

Interface Protocol	USITT DMX512, DyNet, RS232
Operation Modes	DMX, Master/ Slave, Stand-Alone
Display	Anolis Navigation System (ANS)

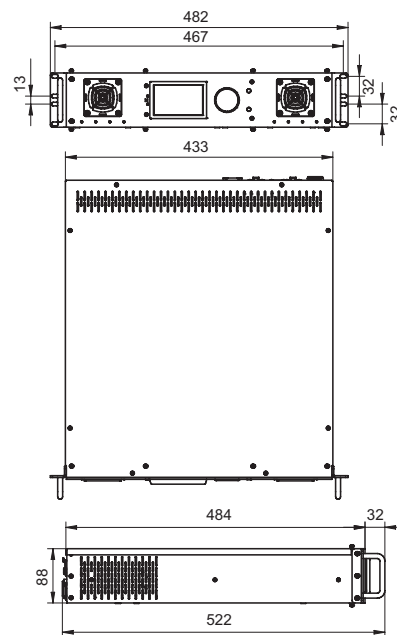
### PHYSICAL

Width x Height x Depth	Inches: 18.98 x 3.47 x 20.55 mm: 482 x 88 x 522
Weight	lbs: 21.39 kg: 9.7
Number of Led Output Zones	8
Maximum Load Per Zone	RGB - 36 x 1W/3W LEDs RGBW - 48 x 1W/3W LEDs RGBW (MC) - 12 x MC LEDs
Total Load	RGB - 288 x 1W/3W LEDs RGBW - 384 x 1W/3W LEDs RGBW (MC) - 96 x MC LEDs
DMX Channels	24, 32, 35, 4, 5, 51
DMX Modes	6
Built in Programs	N/A
Editable Programs	3 (Upto 30 Steps Each)
Max Cable Length	80m Max Per Zone (1W) 20m Max Per Zone (3W)
LED Output Connection	RJ45
DMX Connection	RJ45
RS232 Connection	DE-9 (Male)
Fixing Method	Rack Mount
IP Rating	IP2X
IK Rating	N/A
Cooling System	Convection
Operating Temperature Range	0°C / +40°C (32°F / +104°F)

### CERTIFICATION

Listings	ETL / cETL, CE, RoHS
----------	----------------------

## DIMENSIONS (in mm):



### ACCESSORIES

Cable Joiner (included)
RJ45 / DMX 3 Pin Adaptor
RJ45 / DMX 5 Pin Adaptor

# ArcSplitter 4™, 2x12™

The ArcSplitter unit splits LED outputs of the ArcPower drivers into several branches. The ArcSplitter allows cabling of multiple LED modules to be easier and faster. Small and compact in design, mounting holes in the unit's housing allows easy installation without needing an extra PSU. All splitters are equipped with RJ45 sockets for data input/output. The ArcSplitter 4™ splits one LED output of the ArcPower driver into 4 branches. The ArcSplitter 2x12™ splits two LED outputs of the ArcPower driver into 12 branches each.



## TECHNICAL SPECIFICATIONS:

### PHYSICAL

Number of LED Outputs  
Width x Height x Depth

Weight

LED Connection  
Construction  
Mounting

4, 2x12  
Inches: 8.50 x 1.26 x 3.74 [ArcSplitter 2 x 12 - 18.19 x 1.77 x 6.06]  
mm: 216 x 32 x 95 [ ArcSplitter 2 x 12 - 462 x 45 x 154]  
lbs: 1.10 [ArcSplitter 2 x 12 - 4.19]  
kg: 0.5 [ArcSplitter 2 x 12 - 1.9]  
RJ45  
Sheet Metal Housing  
2 Mounting Holes [ 4 Mounting Holes]  
Rackmount version available for ArcSplitter 2 x 12

### CERTIFICATION

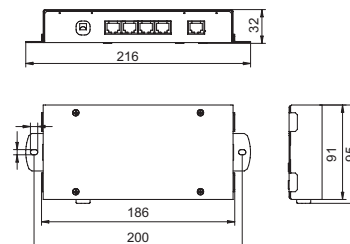
Listings

CE, RoHS

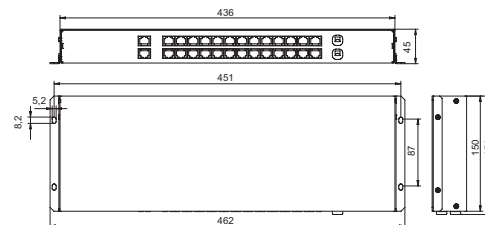


## DIMENSIONS [in mm]:

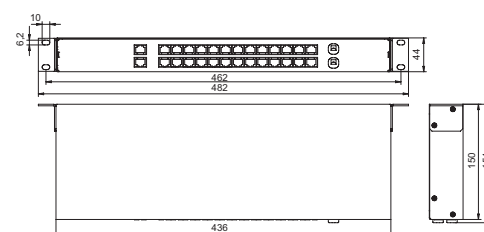
ArcSplitter 4



ArcSplitter 2x12



ArcSplitter 2x12 (with rack holders)



# ArcPower 36/K2™, 72/K2™

When the high output Anolis products 700mA range needs power and control the ArcPower 36/K2™ or ArcPower 72/K2™ can be used to all effects. Utilizing the industry standard CAT5 connectors and including built-in pre programs as well as onboard programming, DMX 512 and RS232 inputs the ArcPower 36/K2™ and ArcPower 72/K2™ can be integrated with ease into virtually any lighting control system.



## TECHNICAL SPECIFICATIONS:

### ELECTRICAL

Input Voltage	100-240V AC 50/60 Hz
Typical Power Consumption	120VA (36/K2) 240VA (72/K2) +/-10%
Max Output Current	700mA Per Colour

### CONTROL

Interface Protocol	USITT DMX512, DyNet, RS232
Operation Modes	DMX, Master/ Slave, Stand-Alone
Display	3 Digit LED

### PHYSICAL

Width x Height x Depth	Inches: 36 - 12.84 x 2.21 x 5.35, 72 - 12.84 x 2.21 x 10.08 mm: 36 - 326 x 56 x 136, 72 - 326 x 56 x 256
Weight	lbs: 36 - 4, 72 - 6.4 kg: 36 - 1.8, 72 - 2.5 36 - 1, 72 - 2
Number of Led Output Zones	RGB: 36 - 36 x 3W LEDs, 72 - 36 x 3W LEDs RGBW: 36 - 42 x 3W LEDs, 72 - 42 x 3W LEDs RGBW (MC): 36 - 10 x MC LEDs, 72 - 10 x MC LEDs
Maximum Load Per Zone	RGB: 36 - 36 x 3W LEDs, 72 - 72 x 3W LEDs RGBW: 36 - 42 x 3W LEDs, 72 - 84 x 3W LEDs RGBW (MC): 36 - 10 x MC LEDs, 72 - 20 x MC LEDs 36 - 3, 4, 6, 7, 4, 72 - 8, 8, 11, 4, 4 36 - 5, 72 - 5 36 - 10, 72 - 6 36 - 3 (Upto 50 Steps Each), 72 - 3 (Upto 30 Steps Each) 20m Max Per Zone
Total Load	RJ45, 72 RJ45 DE-9 (Male) 36 - 2 Mounting Holes, 72 - 4 Mounting Holes IP2X N/A Convection -10°C / +40°C (14°F / +104°F)
DMX Channels	
DMX Modes	
Built in Programs	
Editable Programs	
Max Cable Length	
LED Output Connection	
DMX Connection	
RS232 Connection	
Fixing Method	
IP Rating	
IK Rating	
Cooling System	
Operating Temperature Range	

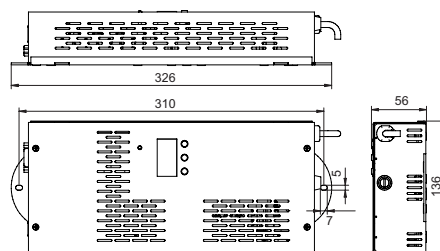
### CERTIFICATION

Listings	CE, RoHS
----------	----------

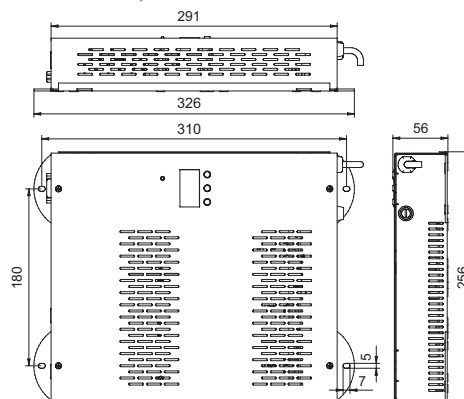


## DIMENSIONS [in mm]:

### ArcPower 36/K2



### ArcPower 72/K2



### ACCESSORIES

- Cable Joiner (included)
- RJ45 / DMX 3 Pin Adaptor
- RJ45 / DMX 5 Pin Adaptor

# ArcPower 36/K2 SW™, 72/K2 SW™

The ArcPower36/K2, 72/K2 SmartWhite™ represent ideal drivers for Anolis 700mA LED modules. Specific property of the drivers – electronic dimming of the individual white channels - provides smooth fading through range of available colour temperatures allowing for precise control of the colour rendering for applications in the decorative and architectural lighting fields.

Utilizing the industry standard CAT5 connectors, user-friendly programmability, DMX 512/RS232 inputs as well as support of DyNet protocol both drivers can be easily integrated with any lighting systems.



## TECHNICAL SPECIFICATIONS:

### ELECTRICAL

Input Voltage 100-240V AC 50/60 Hz  
 Typical Power Consumption 120VA (36/K2) 240VA (72/K2) +/-10%  
 Max Output Current 700mA Per Colour

### CONTROL

Interface Protocol USITT DMX512, DyNet, RS232  
 Operation Modes DMX, Master/ Slave, Stand-Alone  
 Display 3 Digit LED

### PHYSICAL

Width x Height x Depth Inches: 36 - 12.84 x 2.21 x 5.35, 72 - 12.84 x 2.21 x 10.08  
 mm: 36 - 326 x 56 x 136, 72 - 326 x 56 x 256  
 Weight lbs: 36 - 4, 72 - 6.4  
 kg: 36 - 1.8, 72 - 2.5  
 Number of Led Output Zones 36 - 1, 72 - 2  
 Maximum Load Per Zone SW: 36 - 36 x 3W LEDs, 72 - 36 x 3W LEDs  
 SW (MC): 36 - 10 x MC LEDs, 72 - 10 x MC LEDs  
 Total Load SW: 36 - 36 x 3W LEDs, 72 - 72 x 3W LEDs  
 SW (MC): 36 - 10 x MC LEDs, 72 - 20 x MC LEDs  
 DMX Channels 36 - 2, 1, 2, 2, 4, 72 - 4, 1, 3, 6, 3, 6  
 DMX Modes 36 - 5, 72 - 6  
 Built in Programs 36 - 2, 72 - 2  
 Editable Programs 36 - 1 (Upto 50 Steps Each), 72 - 1 (Upto 30 Steps Each)  
 Max Cable Length 20m Max Per Zone  
 LED Output Connection RJ45, 72  
 DMX Connection RJ45  
 RS232 Connection DE-9 (Male)  
 Fixing Method 36 - 2 Mounting Holes, 72 - 4 Mounting Holes  
 IP Rating IP2X  
 IK Rating N/A  
 Cooling System Convection  
 Operating Temperature Range -10°C / +40°C (14°F / +104°F)

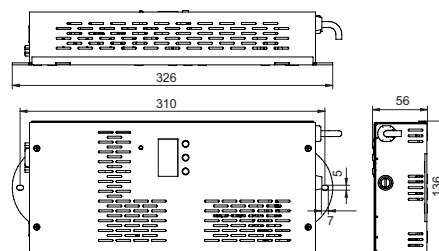
### CERTIFICATION

Listings CE, RoHS

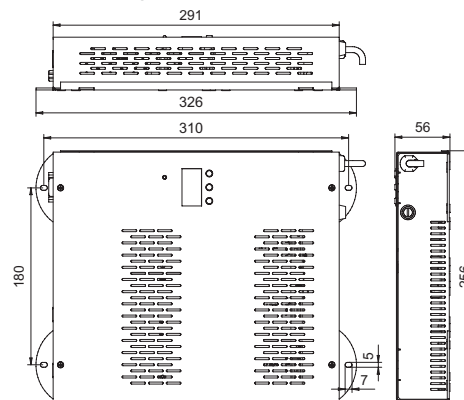


## DIMENSIONS [in mm]:

ArcPower 36/K2 SmartWhite



ArcPower 72/K2 SmartWhite



### ACCESSORIES

Cable Joiner (included)  
 RJ45 / DMX 3 Pin Adaptor  
 RJ45 / DMX 5 Pin Adaptor

# ArcPower 24 Outdoor™

Robust durable construction and excellent IP rating brings the benefits of the Anolis ArcPower to exterior installations in the toughest environmental conditions with capable of operating in high ambient temperatures as well as sub zero conditions the ArcPower Outdoor 24™ maintain extreme reliability where its needed most at the heart of the system. With a wireless control option available only line voltage is required at the point of installation.



IP67



## TECHNICAL SPECIFICATIONS:

### ELECTRICAL

Input Voltage	100-240V AC 50/60 Hz
Typical Power Consumption	70W +/-10%
Max Output Current	350mA or 700mA Per Colour

### CONTROL

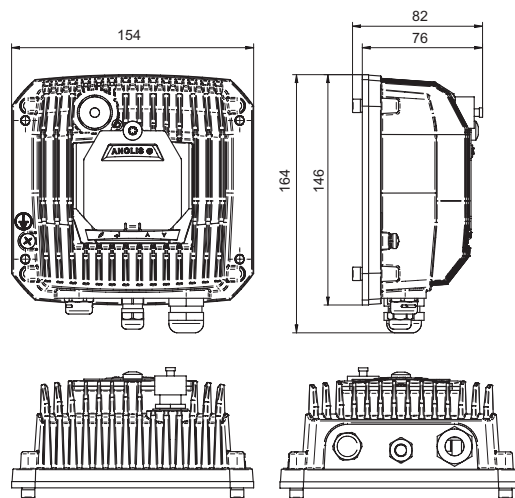
Interface Protocol	USITT DMX512, RDM, WIRELESS CRMX (OPTIONAL)
Operation Modes	DMX, Stand-Alone
Display	Two Row LCD and Control Buttons

### PHYSICAL

Width x Height x Depth	Inches: 6.06 x 6.46 x 3.23 mm: 154 x 164 x 82
Weight	lbs: 3.1 kg: 1.4
Number of Led Output Zones	1
Maximum Load Per Zone	RGBW MC - 6 x 10W MC RGBW RGBW - 24 x 1W/3W LEDs 700mA - 24 LEDs - Max. 6 LEDs Per Colour 350mA - 24 LEDs - Max. 6 LEDs Per Colour RGBW Colour Mixing Virtual Colour Wheel Adjustable Strobe Sequences White Colour Balance Adjusting 16-Bit Dimming 0-100%
Lighting Effects	2, 3, 4, 9
DMX Channels	4
DMX Modes	N/A
Built in Programs	3 (Up to 40 Steps Each)
Editable Programs	80m Max (350mA) 20m Max (700mA)
Max Cable Length	LiYY 8xAWG22 - 1x 0.5m Long (1.64ft), Chogori IP68 Connector
LED Output Connection	Silver, Black, White, Custom RAL (cost option)
Finish Options	4 Fixing Holes
Fixing Method	IP67 (IP66 Junction Box)
IP Rating	N/A
IK Rating	Convection
Cooling System	+60°C @ Ambient +40°C (+140°F @ Ambient +104°F)
Operating Temperature Range	



## DIMENSIONS (in mm):



### CERTIFICATION

Listings

CE, RoHS

### ACCESSORIES

Junction Box (included)  
Gasket Cable Grommet M20 (Included)  
Connector Chogori CGRBDU-08BMMA-SL8001 (Male) IP68 (included)

# ArcPower 48 Outdoor™

When working on larger scale installations the ArcPower Outdoor 48 offers double the capacity of the ArcPower Outdoor 24™ while combined with the same robust durable construction and excellent IP rating it brings the benefits of the Anolis ArcPower to exterior installations in the toughest environmental conditions. Capable of operating in high ambient temperatures as well as sub-zero conditions, the ArcPower Outdoor 48™ maintains extreme reliability where it's needed most, at the heart of the system. With a wireless control option available only line voltage is required at the point of installation.



## TECHNICAL SPECIFICATIONS:

### ELECTRICAL

Input Voltage 100-240V AC 50/60 Hz  
 Typical Power Consumption 130W +/-10%  
 Max Output Current 350mA or 700mA Per Colour

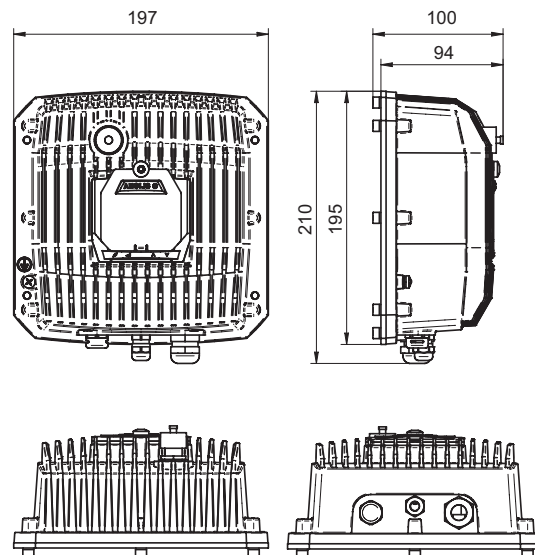
### CONTROL

Interface Protocol USITT DMX512, RDM, WIRELESS CRMX (OPTIONAL)  
 Operation Modes DMX, Stand-Alone  
 Display Two Row LCD and Control Buttons

### PHYSICAL

Width x Height x Depth Inches: 7.76 x 8.27 x 3.94  
 mm: 197 x 210 x 100  
 Weight lbs: 8.82  
 kg: 4  
 Number of Led Output Zones 1  
 Maximum Load Per Zone RGBW MC - 12 x 10W MC RGBW  
 RGBW - 48 x 1W/3W LEDs  
 700mA - 48 LEDs - Max. 12 LEDs Per Colour  
 350mA - 48 LEDs - Max. 12 LEDs Per Colour  
 Lighting Effects RGBW Colour Mixing  
 Virtual Colour Wheel  
 Adjustable Strobe Sequences  
 White Colour Balance Adjusting  
 16-Bit Dimming 0-100%  
 2, 3, 4, 9  
 4  
 N/A  
 3 (Up to 40 Steps Each)  
 80m Max (350mA) 20m Max (700mA)  
 LED Output Connection LiYY 8xAWG22 - 1x 0.5m Long (1.64ft), Chogori IP68 Connector  
 Finish Options Silver, Black, White, Custom RAL (cost option)  
 Fixing Method 4 Fixing Holes  
 IP Rating IP67 (IP66 Junction Box)  
 IK Rating N/A  
 Cooling System Convection  
 Operating Temperature Range +60°C @ Ambient +40°C (+140°F @ Ambient +104°F)

## DIMENSIONS (in mm):



### CERTIFICATION

Listings

ETL / cETL, CE, RoHS

### ACCESSORIES

Junction Box (included)  
 Gasket Cable Grommet M20 (Included)  
 Connector Chogori CGRBDU-08BMMMA-SL8001 (Male) IP68 (included)



# ArcPower 192 Outdoor™

## PSU Outdoor Xtreme

The latest addition to the highly successful range of Anolis ArcPower™ outdoor products is the ArcPower 192 Outdoor™, this 600 Watt DMX power supply, has 4 individually controllable zones. IP67 means installation is possible in the widest variety of environments, both DMX and power can be daisy chained for easy installation. Optional CRMX wireless control is also available giving even more flexibility. With an optional input voltage range up to 277V ArcPower 192 Outdoor™ can bring to life a huge range of landscape/cityscape and facade applications.



IP67



### TECHNICAL SPECIFICATIONS:

#### ELECTRICAL

Input Voltage 100-240V AC 50/60 Hz (277V Cost Option)  
 Typical Power Consumption 600W +/-10%  
 Max Output Current 350mA or 700mA Per Colour

#### CONTROL

Interface Protocol USITT DMX512, RDM  
 Operation Modes DMX, Stand Alone  
 Display N/A

#### PHYSICAL

Width x Height x Depth inches: 23.62 x 7.64 x 3.86  
 mm: 600 x 194 x 98

Weight lbs: 19.84  
 kg: 9

Number of Led Output Zones 4

Maximum Load Per Zone  
 RGBW MC - 12 x 10W MC RGBW  
 RGBW - 48 x 1W/3W LEDs  
 700mA - 48 LEDs - Max. 12 LEDs Per Colour  
 350mA - 48 LEDs - Max. 12 LEDs Per Colour  
 RGBW MC - 48 x 10W MC RGBW  
 RGBW - 192 x 1W/3W LEDs

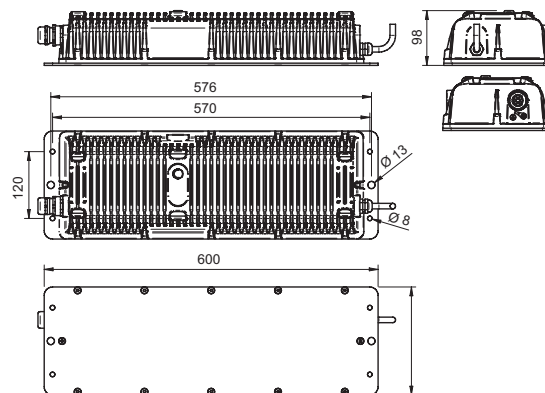
Total Load  
 RGBW Colour Mixing  
 Built-in colour macros  
 White Colour Balance Adjusting  
 12,16,19,4,5

Lighting Effects

DMX Channels 5  
 DMX Modes N/A  
 Built-in Programs 2 (Up to 68 Steps Each)  
 Editable Programs 80m Max (350mA), 20m Max (700mA)  
 Max Cable Length LiYY 8xAWG22 - 4x 0.5m Long (1.64ft), Chogori IP68 Connector  
 LED Output Connection Silver, Black, White, Custom RAL (cost option)  
 Finish Options: 4 Fixing Holes  
 Mounting Method IP67 (IP66 Junction Box), Suitable for wet location  
 IP Rating N/A  
 Impact Rating Convection  
 Cooling System  
 Operating Temperature Range Max. +60°C @ Ambient +40°C [+140°F @ Ambient +104°F]



### DIMENSIONS [in mm]:



#### CERTIFICATION

Listings

ETL / cETL, CE, RoHS

#### ACCESSORIES

Junction Box (included)  
 Gasket Cable Grommet M20 (Included)  
 Connector Chogori CGRBDU-08BMMMA-SL8001 (Male) IP68 (4pcs, included)

# ArcPower 24MC (24V)<sup>TM</sup>

Designed to bring to life Anolis ArcSource<sup>TM</sup> Submersible lighting fixtures the ArcPower 24MC (24V)<sup>TM</sup> uses DMX to provide the colour/dimming control, also with built in programs accessible by the 4 way digital display allowing for stand alone operation. An IP rating of 66 allows installation in wide variety environments.

Multiple fixture installation is made simple as both power and data cabling can be daisy chained, cable runs to fixtures in excess of 50m mean easy location planning. Switchable between 350mA and 700 mA output allows for extra low power consumption if required.



## TECHNICAL SPECIFICATIONS:

### ELECTRICAL

Input Voltage	100-277V AC 50/60 Hz
Typical Power Consumption	75W (full mode) / 35W (eco mode), (+/- 10%)
Max. Output Current	700mA (full mode) / 350mA (eco mode)
LED Output Voltage	24V DC

### CONTROL

Interface Protocol	USITT DMX512
Operation Modes	TBC
Display	4-Digit LED, 4 buttons

### PHYSICAL

Width x Height x Depth	inches: 10.24 x 7.36 x 3.54 mm: 260 x 187 x 90
Weight	lbs: 6.4 kg: 2.9
Number of Led Output Zones	1
Maximum Load Per Zone	1x ArcSource 24MC Submersible
Total Load	1x ArcSource 24MC Submersible
Build In Programs	TBC
Editable Programs	TBC
Max Cable Length	50m (full mode), 100m (eco mode)
LED Output Connection	Connection Block
DMX Connection	Connection Block
Power Connection:	Connection Block
Fixing Method	4 Mounting Holes
IP Rating	IP66
IK Rating	IK10
Cooling System	Convection
Operating Temperature Range	-20°C / +40°C (-4°F / +104°F)

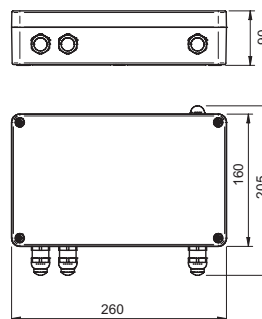
### CERTIFICATION

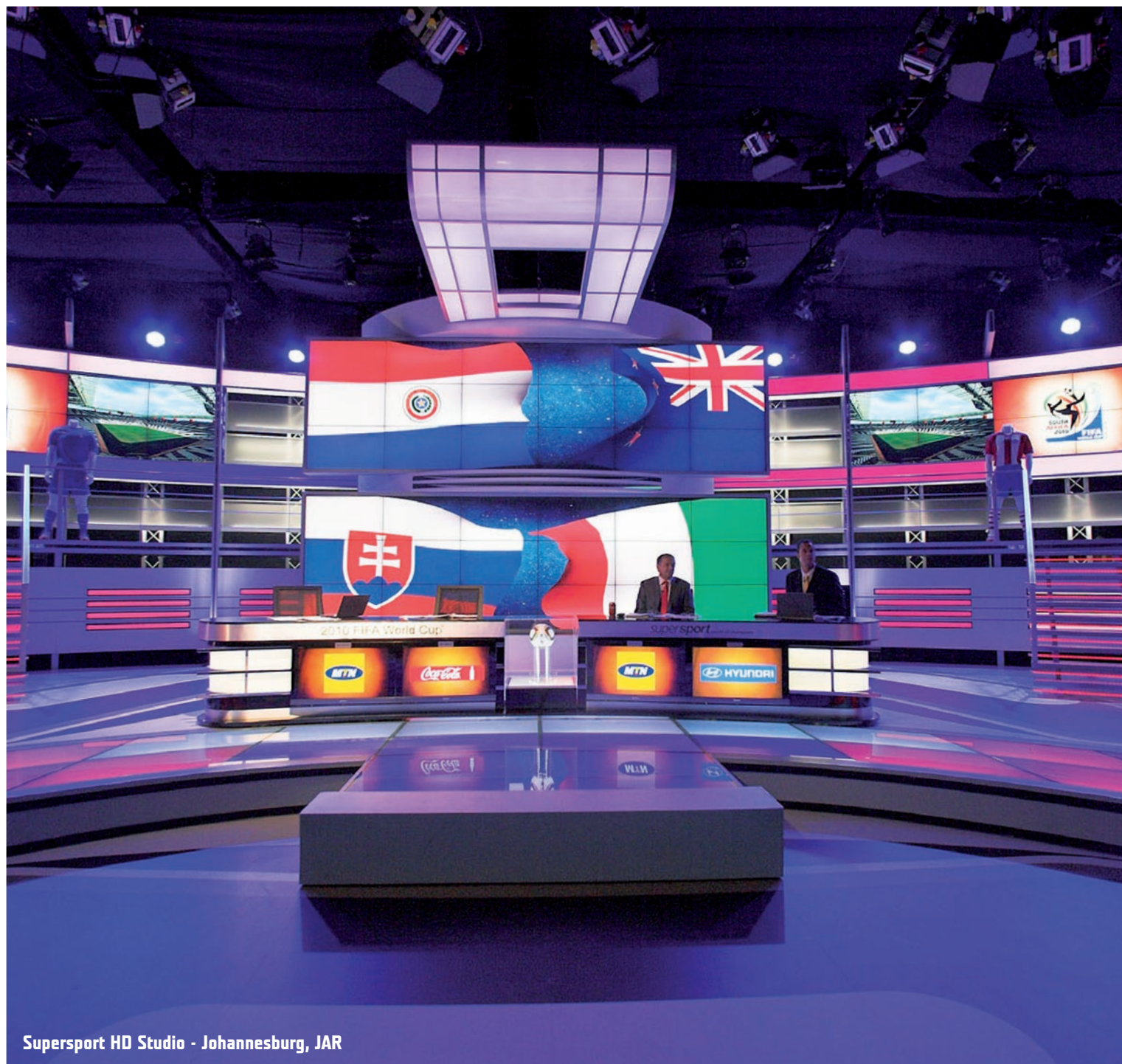
Listings	ETL / cETL, CE, RoHS pending
----------	------------------------------

### ACCESSORIES

Gasket Cable Grommet M20 (included)
-------------------------------------

## DIMENSIONS (in mm):





Supersport HD Studio - Johannesburg, JAR

# ArcControl

When a simple control is required the Anolis ArcControl 1™ provides the perfect user interface, allowing access to full range dimming as well as predefined scrolling for RGB installations. Its compact size fits into single gang wallplates and it's a perfect control companion for rooms, domestic installations, bars and restaurants.

Anolis ArcControl 1024™ is a feature-rich, fully programmable DMX controller, designed to offer comprehensive and intuitive control of all Anolis fittings as well as third party DMX controlled luminaires. It is ideal for the widest possible range of applications including commercial and residential installations - restaurants, bars, hotels, modern interiors, lightscapes, retail outlets, point-of-sales, illuminated signs and exhibition stands.

ArcControl 1™ ► Pg. 64



ArcControl 128™ ► Pg. 65



ArcControl 1024™ ► Pg. 66



Cyber Arch™ ► Pg. 67



# ArcControl 1™

The ArcControl 1™ is a standard wall mounted playback 512 DMX controller. The compact component size of the electronic heart of the ArcControl 1™ means it can be mounted to any standard back box UK/European or USA. LED back-lit front panel with 12 buttons offers adaptable 7 colours colour mixing, dimmer control, and together with 2 built-in programs it provides an easy and convenient controlling option for architectural and small venue installations. Ideal for multipoint controlling environments such as hotel rooms, hallways or stairways.



## TECHNICAL SPECIFICATIONS:

### ELECTRICAL

Input Voltage  
Power Supply

12V DC 15mA ( From ArcPower Drivers)  
ArcPower Range (Except Rackmount 384)

### CONTROL

Interface Protocol  
Control  
Pre-Set Colours

USITT, DMX 512, Dynet  
12 Buttons  
7 - Red, Green, Blue, Cyan, Magenta, Yellow, White  
Light Intensity Control

### PHYSICAL

Width x Height x Depth  
Weight

Inches: 3.17 x 3.17 x 0.72  
mm: 80.5 x 80.5 x 18.4  
lbs: 0.44  
kg: 0.2

### SPECIFICATION

Power Connection  
DMX Connection  
Built In Programs  
Mounting

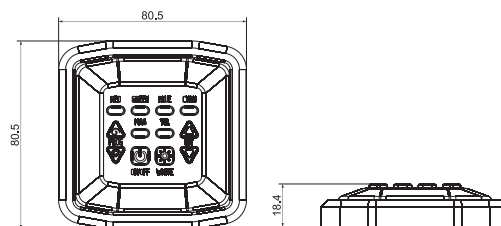
Self Locking Terminals  
Self Locking Terminals  
2  
KU 68 Universal Box

### CERTIFICATION

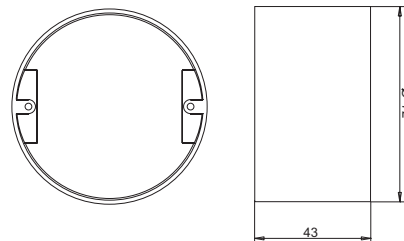
Listings

CE, RoHS

## DIMENSIONS (in mm):



Universal Box KU 68



# ArcControl 128™

ArcControl 128™ brings the dimmer switch into the 21st century. The simple glass touch interface is backed by world leading lighting control software which allows creative programming for all types of applications. The 3 basic modes colour, scene and dimmer allow the user to precisely control dramatic scenes. Programmable via PC and connected directly via micro USB the ArcControl 128™ allows the user complete flexibility. The sleek glass touch interface is both aesthetically pleasing as well as intuitive and easy to use.

Via DMX, ArcControl 128™ is ready to connect to all Anolis systems, keeping the user in complete control. Applications include Architectural, Retail, Domestic, Leisure and Entertainment.



## TECHNICAL SPECIFICATIONS:

### ELECTRICAL

Input Voltage 5.5V - 12V DC

### CONTROL

Interface Protocol DMX512  
Operation Modes Stand-Alone  
Display 3 Touch sensitive buttons

### PHYSICAL

Width x Height x Depth Inches: 3.39 x 3.39 x 0.39  
mm: 86 x 86 x 10  
lbs: 0.29  
kg: 0.13

### SPECIFICATION

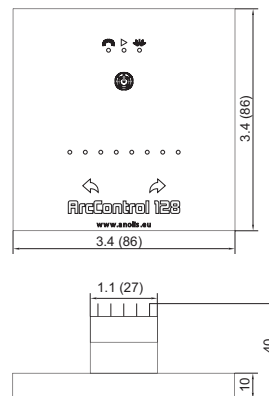
PC Requirement Win XP/Vista/7 + USB 2.0  
Software ArcControl 128 (on USB)  
Face Colour Black, White  
Mounting Wall Mountable  
Connections Power (2 Pins), DMX (3 Pins), Micro USB  
DMX Channels 128 Max (Dependant on Number of Steps)  
Built in Programs 8 Scenes and 42 RGB Fixtures  
Up to 24 Dynamic or Static Scenes (First 8 visualized by LED)  
Compatibility Compatible with any DMX Fixture or DMX Led Driver  
Effect Live Setting of intensity and colour  
IP Rating IP2X  
Operating Ambient Temperature 0°C / +50°C (32°F / +122°F)

### CERTIFICATION

Listings CE, RoHS



## DIMENSIONS [in mm]:





# ArcControl 1024™

Anolis ArcControl 1024™ is a feature-rich, fully programmable DMX controller, designed to offer comprehensive and intuitive control of all Anolis fittings as well as third party DMX-controlled luminaires. It is ideal for the widest possible range of applications including commercial and residential installations - restaurants, bars, hotels, modern interiors, lightscapes, retail outlets, point-of-sales, illuminated signs and exhibition stands. Anolis ArcControl 1024™ offers a stand alone system and is wall-mounted. It requires no additional equipment to control DMX fittings and fits neatly into a 47 mm deep back box. Surface mount and frame mount options are also available. Anolis ArcControl 1024™ includes a comprehensive library of all Anolis luminaires and other effects for easy installation and programming. The LCD display and scroll-wheel combined with the real time astronomical clock allows for more complex sequences, timed events and colours to be added without requiring the use of a computer.



## TECHNICAL SPECIFICATIONS:

### ELECTRICAL

Input Voltage	15V DC 300mA
Contact Inputs	3 Volt-Free
Audio Inputs	Line-Level mono for beat trigger
Clock	Real time clock + 6 month battery back-up

### PHYSICAL

Width x Height x Depth	Inches: 3.17 x 3.17 x 0.73 mm: 80.5 x 80.5 x 18.4
Weight	lbs: N/A kg: N/A

### SPECIFICATION

LCD Screen	128 x 64 Pixel, mono with RGB Backlite
Standard Facia	Stainless Steel
Number of Universes	2 ( 512 Channels Each)
DMX Standard	DMX 1990 A
DMX Refresh Rate	Configurable, 36Hz Max

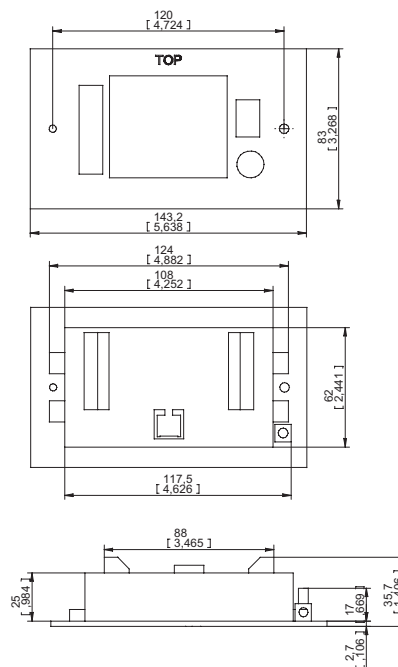
### NETWORKING

Ethernet	10/100 MHz - Auto Uplink Detection Built in web server Telnet command server
Analogue Channels	3 independent 0-10V Outputs, 50mA

### CERTIFICATION

Listings	CE, RoHS
----------	----------

## DIMENSIONS (in mm):



# Cyber Arch™

Second generation of the Cyber Control software contains many new and improved features and functions, including support for both 32/64-bit computer versions, new Easy Stand Alone PRO software and newly designed hardware interfaces with more XLR connectors, SD Card data storage, real time clock and others.

Cyber Arch is using a new USB-DMX interface with two 512 DMX-out channels and miniSD CARD memory. Designed especially for architectural installations, it allows easy control of lighting within a variety of places such as homes, hotels, restaurants, fountains, gardens, and many more.



## TECHNICAL SPECIFICATIONS:

### ELECTRICAL

Input Voltage 5V-10V DC 300mA

### CONTROL

Protocol DMX Signal  
Control Software  
Operation Modes Stand Alone

### PHYSICAL

Width x Height x Depth Inches: 3.11 x 3.63 x 1.7  
mm: 79 x 92 x 43  
Weight lbs: 0,265  
kg: 120g

### SPECIFICATION

Power Connection USB  
DMX Connection 3 Pin XLR  
DMX Channels 512 Standalone  
1024 Live DMX Channels  
Port Triggering  
Time Trigger with Daylight Saving  
SunRise functions  
IP Rating IP20  
Operating Ambient Temperature 0°C / +50°C (32°F / +122°F)

### CERTIFICATION

Listings CE, RoHS

# Anolis - Summary sheet of ArcPower™

Type		Maximum output current per one channel	Maximum load-total	Zones	Maximum load-per zone	Control	Maximum cable lenght
ArcPower	36	350mA	36LEDs/RGB 42LEDs/RGBW 10 multichips RGBW	1	36LEDs/RGB 42LEDs/RGBW 10 multichips RGBW	DMX 512 / DyNet / RS232	80m
	72	350mA	72LEDs/RGB 84LEDs/RGBW 20 multichips RGBW	2	36LEDs/RGB 42LEDs/RGBW 10 multichips RGBW	DMX 512 / DyNet / RS232	80m
	144	350mA	144LEDs/RGB 168LEDs/RGBW 40 multichips RGBW	4	36LEDs/RGB 42LEDs/RGBW 10 multichips RGBW	DMX 512 / DyNet / RS232	80m
	360	350mA	360LEDs/RGB 420LED s/RGBW 100 multichips RGBW	10	36LEDs/RGB 42LEDs/RGBW 10 multichips RGBW	DMX 512 / DyNet / RS232	80m
ArcPower SmartWhite	36	350mA	36LED's/white 10 multichips white	1	36LED's/white 10 multichips white	DMX 512 / DyNet / RS232	80m
	72	350mA	72LEDs/white 20 multichips white	2	36LED's/white 10 multichips white	DMX 512 / DyNet / RS232	80m
	144	350mA	144LEDs/white 40 multichips white	4	36LED's/white 10 multichips white	DMX 512 / DyNet / RS232	80m
	360	350mA	360LEDs/white 100 multichips white	10	36LED's/white 10 multichips white	DMX 512 / DyNet / RS232	80m
ArcPower-K2	36	700mA	36LEDs <sup>3W</sup> /RGB 42LEDs <sup>3W</sup> /RGBW 10 multichips RGBW	1	36LEDs <sup>3W</sup> /RGB 42LEDs <sup>3W</sup> /RGBW 10 multichips RGBW	DMX 512 / DyNet / RS232	20m
	72	700mA	72LEDs <sup>3W</sup> /RGB 84LEDs <sup>3W</sup> /RGBW 20 multichips RGBW	2	36LEDs <sup>3W</sup> /RGB 42LEDs <sup>3W</sup> /RGBW 10 multichips RGBW	DMX 512 / DyNet / RS232	20m
ArcPower-K2, SmartWhite	36	700mA	36LEDs <sup>3W</sup> /white 10 multichips white	1	36LEDs <sup>3W</sup> /white 10 multichips white	DMX 512 / DyNet / RS232	20m
	72	700mA	72LEDs <sup>3W</sup> /white 20 multichips white	2	36LEDs <sup>3W</sup> /white 10 multichips white	DMX 512 / DyNet / RS232	20m
ArcPower 16x6	350mA		16x6LEDs RGB	16	6LEDs RGB	DMX 512	max 20m per zone, total max 80m on zone 1-8 and max 80m on 9-16
			12x8LEDs RGBW, 12x2 multichips RGBW	12	8LEDs RGBW, 2 multichips RGBW		
ArcPower 384 Rack-Mount	350mA		288LED's/RGB 384LED's/RGBW	8	36LED's/RGB 48LED's/RGBW	DMX 512-RDM (remote device management) / DyNet / ArtNet / RS232	80m
	700mA		288LED's <sup>3W</sup> /RGB 384LED's <sup>3W</sup> /RGBW	8	36LED's <sup>3W</sup> /RGB 48LED's <sup>3W</sup> /RGBW		20m
ArcPower 48 (for ArcPad 48 only)		420mA-Red 700mA-GBW	48LED's <sup>3W</sup>	1	48LED's <sup>3W</sup>	DMX 512 / RS232	40m
ArcPower 24 Outdoor	350mA		24LEDs (max 6LEDs per colour) 6 multichips RGBW	1	24LEDs (max 6LEDs per colour) 6 multichips RGBW	DMX 512	80m
	700mA		24LEDs <sup>3W</sup> (max 6LEDs per colour) 6 multichips RGBW	1	24LEDs <sup>3W</sup> (max 6LEDs per colour) 6 multichips RGBW	DMX 512	20m
ArcPower 48 Outdoor	350mA		48LEDs (max 12LEDs per colour) 12 multichips RGBW	1	48LEDs (max 12LEDs per colour) 12 multichips RGBW	DMX 512	80m
	700mA		48LEDs <sup>3W</sup> (max 12LEDs per colour) 12 multichips RGBW	1	48LEDs <sup>3W</sup> (max 12LEDs per colour) 12 multichips RGBW	DMX 512	20m
ArcPower 192 Outdoor (PSU Outdoor Xtreme)	350mA		192LEDs (max 12LEDs per colour) 48 multichips RGBW	4	48LEDs (max 12LEDs per colour) 12 multichips RGBW	DMX 512	80m
	700mA		192LEDs <sup>3W</sup> (max 12LEDs per colour) 48 multichips RGBW	4	48LEDs <sup>3W</sup> (max 12LEDs per colour) 12 multichips RGBW	DMX 512	20m
ArcPower 24MC (24V) (for ArcSource 24MC Submersible only)	350mA		6 multichips RGBW	1	6 multichips RGBW	DMX 512	100m
	700mA		6 multichips RGBW	1	6 multichips RGBW	DMX 512	50m

All information subject to change without notice. (\*) ETL listing is pending. Fixture currently at US listing laboratory.





**ANOLIS is an architectural division of ROBE**

**HQ & Factory:** Anolis, Hážovice 2090, 756 61 Rožnov pod Radhoštěm, Czech Republic, Tel: +420 571 751 500, Fax: +420 571 626 337, Email: [info@anolis.eu](mailto:info@anolis.eu)

**America:** Anolis Lighting, 12349 SW 53rd Street, Suite 202, Cooper City, Florida 33330, USA, Tel: 1-844-426-6547, Email: [info@anolislighting.com](mailto:info@anolislighting.com)

**UK:** Anolis UK, 3 Spinney View, Stone Circle Road, Round Spinney Industrial Estate, NN3 8RF, Northampton, United Kingdom, Tel: 01604 741000, Email: [info@anolis.co.uk](mailto:info@anolis.co.uk)

**France:** Robe lighting France SAS | ZI Paris Nord 2 | Bâtiment Euler | 33, rue des Vanesses | 93420 Villepinte | Tel.: +33 1 48 63 84 81 | Fax: +33 1 48 63 84 87 | E-mail: [info@robelighting.fr](mailto:info@robelighting.fr)

**Asia and Pacific:** Anolis Asia Pacific, 12 New Industrial Road, #02-05 Morningstar Centre, S-536202, Singapore, Tel: +65 6280 8558, Email: [asiapacific@anolis.eu](mailto:asiapacific@anolis.eu)

**Middle East:** Anolis Middle East, Al Asmawi Building DIP, Office Nbr 507 5th floor, Po Box: 391 898, Dubai, UAE, Tel: +971 4 885 3223, Email: [middleeast@anolis.eu](mailto:middleeast@anolis.eu)

**Australia:** Anolis Australia, 28 Expo Court, Ashmore, Queensland 4214, Australia Tel.: +61 7 5509 4633, Email: [info@anolis.com.au](mailto:info@anolis.com.au)

October 2015

[www.anolis.eu](http://www.anolis.eu) | [www.anolislighting.com](http://www.anolislighting.com)