



DIGITAL
GOBO & EFFECT
WHEEL

EMBEDDED
MICRO-MEDIA
SERVER

EASY TO
CONTROL- ONLY
24 DMX
CHANNELS

Accessories

Optional Lens wide-angle 1,1,5

Mounting bracket

Packaging

Cardboard MiniMe®

Single Top Loader Case MiniMe®

Six-Pack Top Loader Case MiniMe®

Eight-Pack Top Loader Case MiniMe®

Exterior dimensions

360 x 440 x 720 mm (14.2" x 17.3" x 28.4")	380 x 290 x 570 mm (15.0" x 11.4" x 22.4")	910 x 590 x 600 mm (35.8" x 23.2" x 23.6")	360 x 270 x 1000 mm (14.2" x 10.6" x 39.4")
---	---	---	--

ANOLIS®

Head office: ROBE lighting s. r. o. | Hážovice 2090 | 756 61 Rožnov pod Radhoštěm | Czech Republic | Tel: +420 571 751 500 | Fax: +420 571 626 337 | E-mail: info@anolis.eu | Factory: ROBE lighting s. r. o. | Palackého 416 | 757 01 Valašské Meziříčí | Czech Republic | Tel: +420 571 751 500 | Fax: +420 571 751 515 | E-mail: robe@robe.cz | UK: Anolis UK | 3 Spinney View | Stone Circle Road | Round Spinney Industrial Estate | NN3 8RF, Northampton | United Kingdom | Tel: 01604 741000 | Fax: 01604 741041 | E-mail: info@anolis.co.uk | USA: Anolis Lighting | 12349 SW 53rd Street, Suite 202 | Cooper City | Florida 33330 | U.S.A. | Tel: +1 844 426 6547, 1-844-4 ANOLIS | Fax: (954) 680-1910 | E-mail: info@anolislighting.com | Australia: Anolis Australia | 28 Expo Court, Ashmore | 4215, Queensland | Australia | Tel: +61 7 5509 4633 | Fax: +61 7 5509 4677 | E-mail: info@anolis.com.au | Asia and Pacific: Anolis Asia Pacific | 12 New Industrial Road | #02-05 Morningstar Centre | S-536202 | Singapore | Tel: +65 6280 8558 | Fax: +65 6280 2896 | E-mail: asiapacific@anolis.eu | Middle East: Anolis Middle East | Office Nbr 507 5th Floor | Al Asmawi Building DIP 1 | Dubai | UAE | Po Box: 391 898 | Tel: +971 4 885 3223 | E-mail: middleeast@anolis.eu | Russia and CIS: Taganskaya str. 26 - 1 - 72 | 109004 Moscow | Russia | Tel: +7 495 504 9569 | E-mail: russia@anolis.eu | Central and South America: Galicia 1198 ap 303 | 1100 Montevideo | Uruguay | Tel: +5982 900 67 47 | E-mail: latam@anolis.eu

www.anolis.eu

August 2014 © ROBE lighting s. r. o. All specifications subject to change without notice. Patents pending.

MiniMe®

ANOLIS®



RGB LED
LIGHT
SOURCE

DIGITAL
GRAPHIC
ENGINE

LIVE INPUT VIA
EXTERNAL
HDMI

ANOLIS® MiniMe

Bar, club and retail lighting has taken another step into the digital future. The MiniMe is an effects lighting luminaire with the addition of full video output. This small, neat, fast moving fixture is LED driven with 20,000 hour lifetime light source. Colours, Gobos and beam shapes are all digitally generated by the on-board media server. Custom artwork, still photographs and video can also be simply uploaded for projection, whilst live video can be streamed through the HDMI input.

Light Engine

- Light source: RGB LED device
- Light output: comparable with 2,500 ANSI lumen lamp fixtures
- Rated light source life: 20,000 hours

Digital Gobo/Image Projection Output

- Aspect ratio: 16:10
- Resolution: WXGA (1280x800)
- Throw ratio: 3.5:1
- Contrast ratio: 700:1
- Display colours: 16.7 million colours

Electrical Specification

- Auto-switching power supply
- Input voltage: 100-240V AC, 50/60 Hz
- Max. power consumption: 100W @ 230V

Mechanical Specification

- Height: 345 mm (13.6") - head in vertical position
- Width: 249 mm (9.8")
- Depth: 191 mm (7.5")
- Weight: 6.0 kg (13.2 lbs)

Thermal

- Operating ambient temperature range: 0-40 °C
- Maximum housing temperature: 60 °C

Connection

- DMX data in/out: Locking 5-pin XLR
- 2 x USB 2.0 connector (Series A)
- ArtNet: RJ 45 (Neutrik Ethercon)
- External video input: 1 x HDMI
- AC power in/out: Neutrik PowerCon

Hardware

- Raspberry Pi Model B 512MB RAM

Operation System

- Linux OS

Graphic engine

- Digital gobo wheel with gobos, images and videos
- Gobo rotation and indexing
- Video speed control
- RGB or CMY colour mixing
- Virtual colour wheel with pre-programmed 234 colours including 9,000K white
- Colour effect wheel with wide range of in-built effects (colour transitions and cross-fades, multiple colour images, rainbow effects)
- Effect wheel with wide range of graphic effects (Kaleidoscopic effects, transition effects between two gobos, pixelation effects, iris effects and more...)
- Effect speed control
- Horizontal/Vertical keystoneing
- Smooth dimmer
- Shutter and strobe effects
- Digital zoom
- Supported image Format: JPG
- Supported Video Formats: MPEG4, H264

Control and Programming

- Upload and projection of custom artwork, still photographs and videos from USB memory stick
- Live input via external HDMI
- Setting & Addressing: two-row LCD display & 4 control buttons
- Protocols: USITT DMX-512, RDM, ArtNet
- Optional wireless external module available: CRMX™ technology from Lumen Radio
- Control channels: 24
- 1 DMX protocol mode
- Ethernet port: Art-Net, ready for ACN

Electromechanical Effects

- Motorized focus
- Pan: 450°
- Tilt: 270°

Rigging

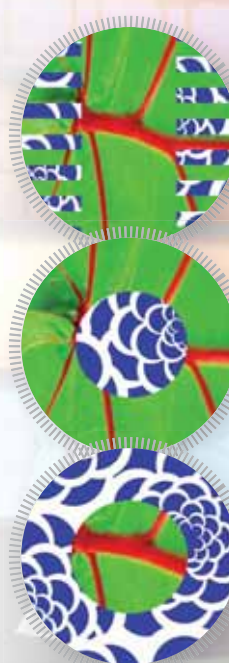
- Mounting points: 1 pair of 1/4-turn locks
- 1x Omega bracket with 1/4-turn quick locks
- Optional: mounting bracket



LED colours
RGB LED source is able to produce 16.7 million colours.

Gobo Transition

Simple to use preprogrammed automatic gobo transition can easily be chosen from. Automatic transition feature can be combined with gobo auto playback for super quick setup.



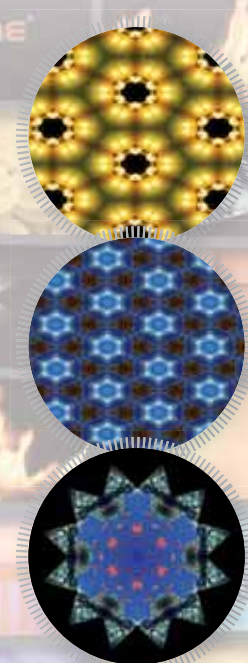
Mid-Air Effects

MiniMe's internal effect engine can generate spectacular mid air animations full of colorful laser like beams.



Kaleidoscopic Effects

The Kaleidoscopic effects allow the user to generate many new and appealing graphical effects from the current content.



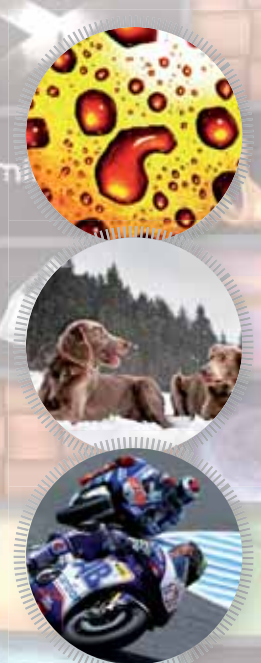
Colour Modifying

Colour Modifying has never been easier. By applying colour filters, colour keying or masking effects one can achieve quick and powerful colour transitions.



Picture & Movie

The MiniMe micro-media server supports MPEG4 and H264 video formats as well as JPEG image files (max. 1280x800 pixel). Includes factory media content and custom artwork, still photographs and video can also be simply uploaded for projection.



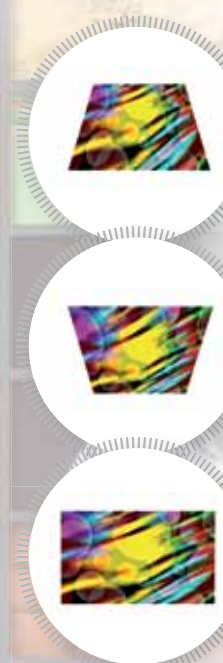
Digi Iris

DigiIris is a flexible masking tool that changes the shape of the image or video. Various shapes are available as well as hard/soft edge iris types.



Keystoneing

MiniMe provides a full set of keystone parameters. Picture distortion can be corrected in x and y directions. Special Autokeysoning feature can correct the image during pan and tilt movement.



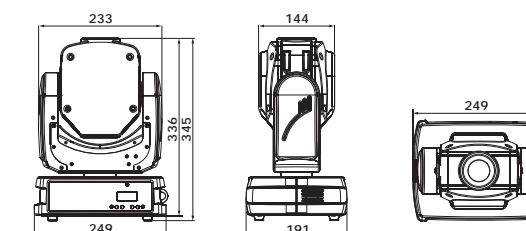
Digital Gobo wheel

Example of in-built digital content.



Custom Content

Custom content can easily be uploaded to the internal memory or can be directly played from the external USB memory stick.



Robin MiniMe - Illuminance/Image Size Chart Throw Distance Ratio 3.5 : 1

Illuminance - centre (white output)		Image Size	
25 lx 2.3 fc	14m (46')	X=4.0m (13.12')	Y=2.50m (8.20')
29 lx 2.7 fc	13m (43')	X=3.71m (12.10')	Y=2.32m (7.62')
34 lx 3 fc	12m (39')	X=3.43m (11.25')	Y=2.14m (7.03')
40 lx 3.7 fc	11m (36')	X=3.14m (10.31')	Y=1.96m (6.44')
49 lx 4.5 fc	10m (33')	X=2.86m (9.37')	Y=1.79m (5.86')
60 lx 5.6 fc	9m (30')	X=2.57m (8.44')	Y=1.61m (5.27')
76 lx 7 fc	8m (26')	X=2.29m (7.05')	Y=1.43m (4.69')
100 lx 9.2 fc	7m (23')	X=2.0m (6.56')	Y=1.25m (4.1')
135 lx 13 fc	6m (20')	X=1.71m (5.62')	Y=1.07m (3.52')
195 lx 18 fc	5m (16')	X=1.43m (4.69')	Y=0.89m (2.93')
305 lx 28.3 fc	4m (13')	X=1.14m (3.75')	Y=0.71m (2.34')
542 lx 50 fc	3m (10')	X=0.86m (2.81')	Y=0.54m (1.76')
1220 lx 113 fc	2m (7')	X=0.57m (1.87')	Y=0.36m (1.17')

