

# ArcSource Inground 24MC Integral

The brand new ArcSource Inground 24MC Integral™ is packed with exciting new features to simplify inground installations. High light output is achieved via 6 x 10 Watt High Power multichip LEDs. A variety of optics is available from narrow to wide as well as an asymmetrical option. The light source can be remotely tilted +/- 15° from the horizontal position, insuring accurate illumination of the selected surface, with both power supply and control built-in, retro-fitting to existing installations becomes possible. With use of the wireless control option only mains power is required at the fitting location.



## TECHNICAL SPECIFICATIONS:

### ELECTRICAL

Input Voltage 100-277V AC, 50/60 Hz  
Typical Power Consumption 65W @ 230V, +/- 10%

### OPTICAL

Light Source 6 x 10W Multi-Chip LEDs  
Colour Variants RGBW (W=CW-6300K), PW (6300K), SW (2700-7100K)  
Red/Green/Blue/White, Pure White, Smart White  
Lumen Output (Delivered) 1540lm (RGBCW at 7°)  
Beam Angle 7°, 24°, 34°, 42°x7°, 7°x42°  
Projected Lumen Maintenance 60,000 hrs ( L70 @ 25°C / 77°F)

### CONTROL

Interface Protocol USITT DMX512 RDM  
Wireless DMX (Optional Accessory) Lumen Radio CRMX Technology  
Control System Anolis Lighting Controls or any Third Party DMX512 Controllers  
Power Supply Integral  
Stand Alone Control Yes

### PHYSICAL

Width x Height x Depth Inches: ø12.6 x 15.75  
mm: ø320 x 400  
Weight lbs: 40.1  
kg: 18.2  
Housing High Pressure Die-Cast Aluminium Body - Stainless Steel Flange  
Tempered Glass  
Fixture Cable and Connections Integral Junction Box  
Fixing Method External Sleeve  
Adjustability Motorized Tilt +/-15°  
IP Rating IP67  
IK Rating IK10  
Static Load Resistance 35kN  
Cooling System Convection  
Operating Ambient Temperature -20°C / +40°C [-4°F / +104°F]  
Operating Temperature +55°C @ Ambient +40°C [+131°F @ Ambient +104°F]

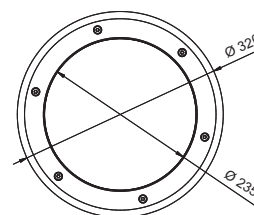
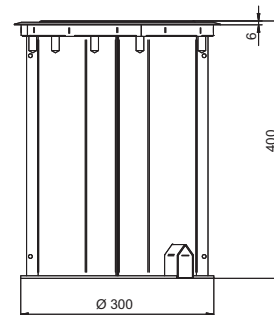
### CERTIFICATION

Listings ETL / cETL, CE, RoHS

### ACCESSORIES

Top Installation Cover (included)

## DIMENSIONS (in mm):



# LEaD LiGHT

Experts in LED

**LEaD LIGHT GmbH**

Hoogeweg 132  
47623 Kevelaer

Tel.: +49 2832/975208-0  
Fax: +49 2832/975208-88

Web: [www.LEaD-LIGHT.de](http://www.LEaD-LIGHT.de)  
Mail: [info@LEaD-LIGHT.de](mailto:info@LEaD-LIGHT.de)